

GRADUS

| | |
|------------------------|-----|
| Uniclass L5361: P71 | |
| CI/SfB (43) | Tn6 |



Matting | Boulevard

Where to use barrier matting

An effective barrier matting system, when correctly specified, will help to minimise the risk of slip accidents caused by wet flooring and lower maintenance costs by significantly reducing the amount of dirt and moisture tracked into a building. Barrier matting can not only be used at a building's entrance and access points but also in other areas that are subject to increased risk of soiling and heavy wear. In many cases the optimum performance is achieved by combining different types of barrier matting.

For the full range of Gradus Barrier Matting Systems request a catalogue or visit www.gradusworld.com

The illustration below is designed to act as a guide to show some of the areas of a building that are at risk.



Zone 1 Exterior Entrances & Access Points

Primary Barrier Matting

- Removes excess dirt prior to entering a building using a scraper wiper
- Increases the effectiveness of internal primary and secondary matting
- Ideal in heavy traffic areas

Zone 2 Interior Entrances & Access Points

Primary Barrier Matting

- Removes and retains dirt and moisture to prevent ingress to adjacent floorcoverings through a combination of scraper and textile wipers
- Available with a choice of wipers that offer excellent appearance retention when cleaned in accordance with Gradus recommendations
- Available in a choice of open and closed construction and in different gauges to suit both recessed and surface mounted options
- Available to suit varying types and volumes of traffic

Zone 3 Interior Circulation Areas and Some Interior Entrances & Access Points

Secondary Barrier Matting

- Removes and retains dirt and moisture to prevent ingress to adjacent floorcoverings
- Often used in conjunction with Zone 2 primary entrance mats to create additional protection for surrounding floorcoverings. Can, in some circumstances, be used as stand alone entrance barrier matting
- Ideal for use in areas of heavy traffic and heavy wear such as staircases, reception areas, lift lobbies and internal entrances such as factory to office areas etc
- Offers excellent appearance retention properties when cleaned in accordance with Gradus recommended cleaning methods. Some products carry the additional protection of a wear warranty

Zone 4 Other Areas

Secondary Barrier Matting

| Products: | page |
|------------------------------|------|
| Boulevard 6000 | 2 |
| Boulevard 5000 ^{HD} | 4 |
| Boulevard 1500 | 6 |

- Removes and retains dirt and moisture to prevent ingress to adjacent floorcoverings
- Ideal for use in internal areas subject to a risk of spillage and soiling such as canteen / vending areas or breakout areas within an office environment
- Products are produced from high performance fibres that are suited to intense cleaning to ensure long life appearance retention. Some products carry the additional protection of a wear warranty

| Products: | page |
|------------------------------|------|
| Boulevard 6000 | 2 |
| Boulevard 5000 ^{HD} | 4 |
| Boulevard 1500 | 6 |

Boulevard 6000

Boulevard 6000 Indigo and Brickworks Holbrook 06712



Product information:

A tufted cut pile high performance barrier carpet incorporating a heavy scraper fibre for optimum dirt removal and excellent moisture retention properties in the most demanding environments.

Barrier carpet provides an effective solution to reducing maintenance costs on surrounding floorcoverings and helps minimise the risk of slip on hard floor finishes. It can also, when maintained correctly, help protect the appearance of surrounding floorcoverings throughout their life.

Often used in conjunction with a primary entrance mat and in some situations can be used as stand-alone matting in entrances and access points. It is also ideal for use in all areas of a building, particularly those at greatest risk of damage from tracked through soil and moisture e.g. Reception areas, staircases, lifts, canteen areas, service points etc.

Designed to complement Esplanade Plus and Access primary barrier matting.

| Warranties: | Sheet | Tile |
|-------------|----------|----------|
| Wear | 10 Years | 10 Years |

| Specification: | Sheet | Tile |
|----------------------|------------------------------|-----------------------|
| Product Dimensions | 25m x 2m | 500mm x 500mm |
| Product Construction | Tufted Cut Pile | |
| Surface Yarn | 100% Aquafil Alto Chroma SDN | |
| Backing | PVC | Bitumen |
| Total Weight | 4470 g/m ² | 4768 g/m ² |
| Total Thickness | 8mm | 9mm |
| Pile Height | 5mm | 5mm |

Performance Specification

| | |
|----------------------------------|-----------|
| Classification BSEN 1307 | Class 3 |
| Static Electricity ISO 6356 | <2kV |
| Thermal Resistance BS 4745: 1990 | 1.3 (TOG) |

Flammability

| | |
|--------------|--------------|
| BSEN 13501-1 | Class Cfl-s1 |
|--------------|--------------|

For recommended adhesives contact Technical Services on 01625 428922.



ISO 9001 : FM 10763
ISO 14001 : EMS 59511
ISO 18001 : IV 18/18493



BRE Certification (BREEAM):

This carpet has been awarded the highest green guide 'A+' rating under the BRE's certified environmental profile scheme. For full information on ratings visit www.greenbooklive.com



ENP 399
Greenguide A+

Samples

An accurate colour match can only be achieved by requesting the relevant product sample(s) from Gradus Technical Support on 01625 428922.



500mm x 500mm View



Shadow
LRV 5.36



Walnut
LRV 2.86



Rosemary
LRV 4.45



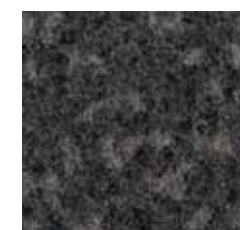
Galaxy
LRV 2.56



Indigo
LRV 4.01



Atlantic
LRV 1.90



Nickel
LRV 3.70



Nightfall
LRV 1.48

Boulevard 5000^{HD}



Boulevard 5000^{HD} Redpoll and Times Square Red

Product information:

A tufted cut pile high performance barrier carpet incorporating a light scraper fibre for optimum dirt removal and excellent moisture retention properties in most contract environments.

Barrier carpet provides an effective solution to reducing maintenance costs on surrounding floorcoverings and helps minimise the risk of slip on hard floor finishes. It can also, when maintained correctly, help protect the appearance of surrounding floorcoverings throughout their life.

Often used in conjunction with a primary entrance mat and in some situations can be used as stand-alone matting in entrance and access points. It is also ideal for use in any area of a building prone to soil and moisture damage such as staircases, lifts, canteen areas or in areas of heavy wear such as reception areas or corridors.

Designed to complement Esplanade Plus and Access primary barrier matting.

| Warranties: | Sheet |
|-------------|---------|
| Wear | 5 Years |

| Specification: | Sheet |
|----------------------|------------------------------|
| Product Dimensions | 25m x 2m |
| Product Construction | Tufted Cut Pile |
| Surface Yarn | 100% Aquafil Alto Chroma SDN |
| Backing | PVC |
| Total Weight | 4300 g/m ² |
| Total Thickness | 7.5mm |
| Pile Height | 5mm |

| Performance Specification | |
|-----------------------------|---------|
| Classification BSEN 1307 | Class 3 |
| Static Electricity ISO 6356 | <2kV |

| Flammability | |
|--------------|-------------|
| BSEN 13501-1 | Class Cf-s1 |

For recommended adhesives contact Technical Services on 01625 428922.



ISO 9001 : FM 10763
ISO 14001 : EMS 59511
ISO 18001 : IV 18/18493



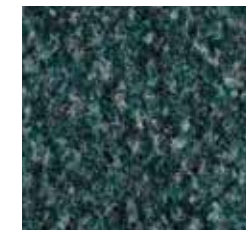
500mm x 500mm View



Corncrake
LRV 9.52



Kestrel
LRV 5.42



Shelduck
LRV 5.20



Redpoll
LRV 4.14



Cuckoo
LRV 5.63



Swallow
LRV 2.08



Moorhen
LRV 2.98



Jackdaw
LRV 1.73

Samples

An accurate colour match can only be achieved by requesting the relevant product sample(s) from Gradus Technical Support on 01625 428922.

Boulevard 1500



Boulevard 1500 Terra

Product information:

A cost effective barrier matting that is easy to install and maintain. Its ribbed design is resistant to compression and offers a superior alternative to coir matting, in line with the guidance in BS8300:2009+A1:2010 and Approved Document M of The Building Regulations 2000.

Barrier carpet provides an effective solution to reducing maintenance costs on surrounding floorcoverings and helps minimise the risk of slip on hard floor finishes. It can also, when maintained correctly, help protect the appearance of surrounding floorcoverings throughout their life. Boulevard 1500 is often used in conjunction with a primary entrance mat and in some situations can be used as a stand alone matting in entrances and access points.

Designed to complement Esplanade 1500 primary barrier matting.

| Specification: | Sheet |
|----------------------|-----------------------|
| Product Dimensions | 15m x 2m |
| Product Construction | Needlepunch |
| Surface Yarn | 100% Polypropylene |
| Backing | Rubber |
| Total Weight | 3000 g/m ² |
| Total Thickness | 9mm |

Flammability

| | |
|---------------------------|---|
| Hot Metal Nut Test BS4790 | Pass, Low Radius of Effects of Ignition |
|---------------------------|---|

For recommended adhesives contact Technical Services on 01625 428922.



ISO 9001 : FM 10763
ISO 14001 : EMS 59511
ISO 18001 : IV 18/18493



Samples

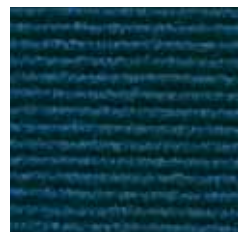
An accurate colour match can only be achieved by requesting the relevant product sample(s) from Gradus Technical Support on 01625 428922.



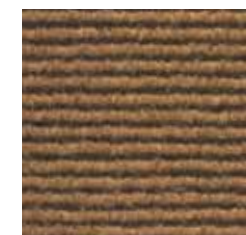
500mm x 500mm View



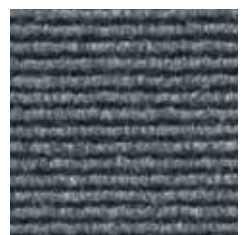
Tempestas
LRV 2.14



Marinus
LRV 2.71



Terra
LRV 10.89



Calculus
LRV 9.03

Cleaning & Maintenance



Boulevard 5000^{HD} Kestrel

A planned cleaning and maintenance programme is crucial to help maintain the performance and visual appearance of Gradus barrier matting and to maximise the lifespan of the product. Trained cleaning staff or a reputable contract cleaner should be used.

Daily Cleaning

Sweep and vacuum daily to remove surface soil using a heavy duty upright vacuum cleaner with a brush or tub vacuum cleaner with a power head. Inspect for chewing gum and remove as necessary (see [chewing gum removal](#) for more information).

If the matting is wet, the area should be vacuumed using a wet pick up machine to remove as much water / soil as possible.

Deep Cleaning

To maintain a good visible standard, the matting will require deep cleaning on a weekly / monthly / as required basis (depending on weather conditions and volume of traffic). Deep cleaning can be carried out using various methods, depending on equipment availability.

In all cases, deep cleaning must follow brushing and vacuuming. Attention must be given to stains by using a pre-treatment of carpet spot and stain remover and chewing gum remover if required.

- A) Preferred Method: The use of a conventional jet extraction machine, using a conventional floor tool, scrubbing the carpet and continuing to extract as much water as possible. This method leaves the carpet as dry as possible.
- B) Deep Soiled Matting: As with all other maintenance methods, always prepare the carpet by vacuum cleaning prior to treatment. The cleaning professional may consider a combination of a rotary scrubbing machine fitted with a carpet brush and extraction equipment to get improved results.



Wet Pick Up Machine



Jet Extraction Machine



Rotary Scrubbing Machine

Recommended Cleaning Products

Gradus has worked with Selden Research to undertake extensive testing on Gradus barrier matting products. As a result, a range of cleaning products has been recommended for use with Gradus matting.

The cleaning products listed below are suitable for Gradus barrier matting.

| Product Description | Name of Cleaner | Code |
|----------------------------------|-------------------------------|------|
| High Soiling and Traffic Cleaner | Heavy Duty Extraction Shampoo | C156 |
| Hot Water Extraction Cleaner | Selfoam H.E. | C034 |
| Carpet Spot & Stain Remover | Spot & Stain | T012 |

Chewing Gum Removal

Chewing gum can be removed by freeze spraying or by applying a suitable chewing gum remover. Lightly spray onto the affected area and allow the product to freeze the gum. Scrape off with a blunt object such as a spatula.

Recommended cleaning product:

| Product Description | Name of Cleaner | Code |
|---------------------|-----------------|------|
| Chewing Gum Remover | Selfreeze | K003 |

For further information about these cleaning products, including instructions for use and COSHH data sheets, please contact:

Selden Research Limited, Staden Business Park, Staden Lane, Buxton, Derbyshire, SK17 9RZ.
Tel: 01298 26226 Email: gradus@selden.co.uk Website: www.selden.co.uk



www.gradusworld.com
call: 01625 428922

GRADUS

Gradus Accessories Park Green Macclesfield Cheshire SK11 7LZ England UK

Tel: 01625 428922 Fax: 01625 433949

For enquiries outside the UK and Eire contact Gradus International on +44 (0)1625 613780

www.gradusworld.com