

BEYOND
FLOORING



COMMERCIAL

**Product catalogue
2022**

CARPET TILES



COMMERCIAL

“

We offer top-quality products,
impeccable service,
innovative, sustainable production
and a proven track record...

But most of all,
we love helping to
achieve your goals.”

About IVC Commercial

IVC Commercial is a global player in the design and manufacture of flooring solutions including Carpet Tiles, Luxury Vinyl Tiles (LVT), Heterogeneous Vinyl and Laminate for use in business, public and private environments.

As the commercial division of IVC Group, we're focused on improving the productivity and wellbeing of users in spaces through innovative solutions that are easy to implement and affordable. Accountable for our actions, we design and make floors responsibly in Europe, developing a circular approach to the future of flooring.

IVC Group is part of Mohawk Industries Inc., the world's largest flooring company. With 1,500 employees and 7 production sites in Europe and Russia, IVC Group produces over 130,000,000m² of flooring every year.



Carpet Tiles

The Collection

Art Intervention

06
CREATIVE SPARK

10
EXPANSION POINT

12
BLURRED EDGE

Balanced Hues

14
BALANCED HUES

Contour

16
PERSPECTIVE

18
VIEW

Immersion

20
ALTERNATE

22
LIBERATE

24
ANIMATE

Imperfection

26
GRIT

28
BRUUT

30
RUPURE

Rudiments

32
BASALT

34
JUTE

36
TEAK

38
CLAY

40
CLAY CREATE

42
METALLIC CLAY

Step Up

44
STEP UP

BEYOND
FLOORING



Multi colour mix

Creative Spark

Art Intervention

- Construction: tufted 1/10" gauge loop
- Backing: EcoFlex™ Statera
- Pile material: 100% solution dyed nylon
- Dimensions - m²/box: 50 x 50 cm - 5 m²

- Pile weight: ± 540 g/m²
- Pile thickness: ± 3,1 mm
- Total thickness: ± 6,3 mm
- Wear classification: 33 / LC1

- Fire classification: Bfl-s1
- Impact sound reduction: ΔLw = 32 dB
- Sound absorption: 0,15 αw
- GUT-Prodís number: 3AA1D4DF

			
566 LRV: 2,41	646 LRV: 3,62	467 LRV: 6,73	478 LRV: 4,29
			
574 LRV: 5,67 - L 38,33	685 LRV: 7,04	310 LRV: 5,82	363 LRV: 3,05
			
543 LRV: 6,67	621 LRV: 9,97	232 LRV: 12,32	362 LRV: 5,90
			
569 LRV: 6,21	627 LRV: 17,61	140 LRV: 31,36	838 LRV: 4,72

LRV = Light Reflectance Value according to BS 8493, L = according to CIE L*a*b* colour space



646

848

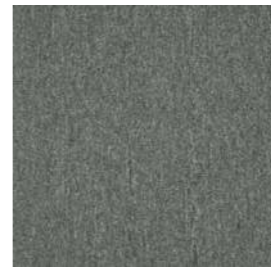
685

911

Creative Spark



989 LRV: 4,37



969 LRV: 12,73



419 LRV: 19,09



731 LRV: 25,98



979 LRV: 9,02 - L 38,33



927 LRV: 19,80



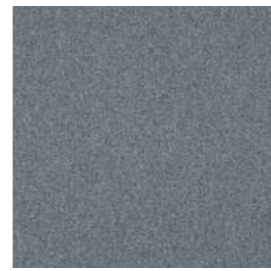
854 LRV: 8,29



733 LRV: 18,39



904 LRV: 14,44



559 LRV: 13,16



848 LRV: 3,95



751 LRV: 20,99



911 LRV: 31,04



545 LRV: 23,51



998 LRV: 2,29



745 LRV: 9,95

LRV = Light Reflectance Value according to BS 8493, L = according to CIE L*a*b* colour space



Expansion Point 621 - Creative Spark 646 - 621 - Basalt 685

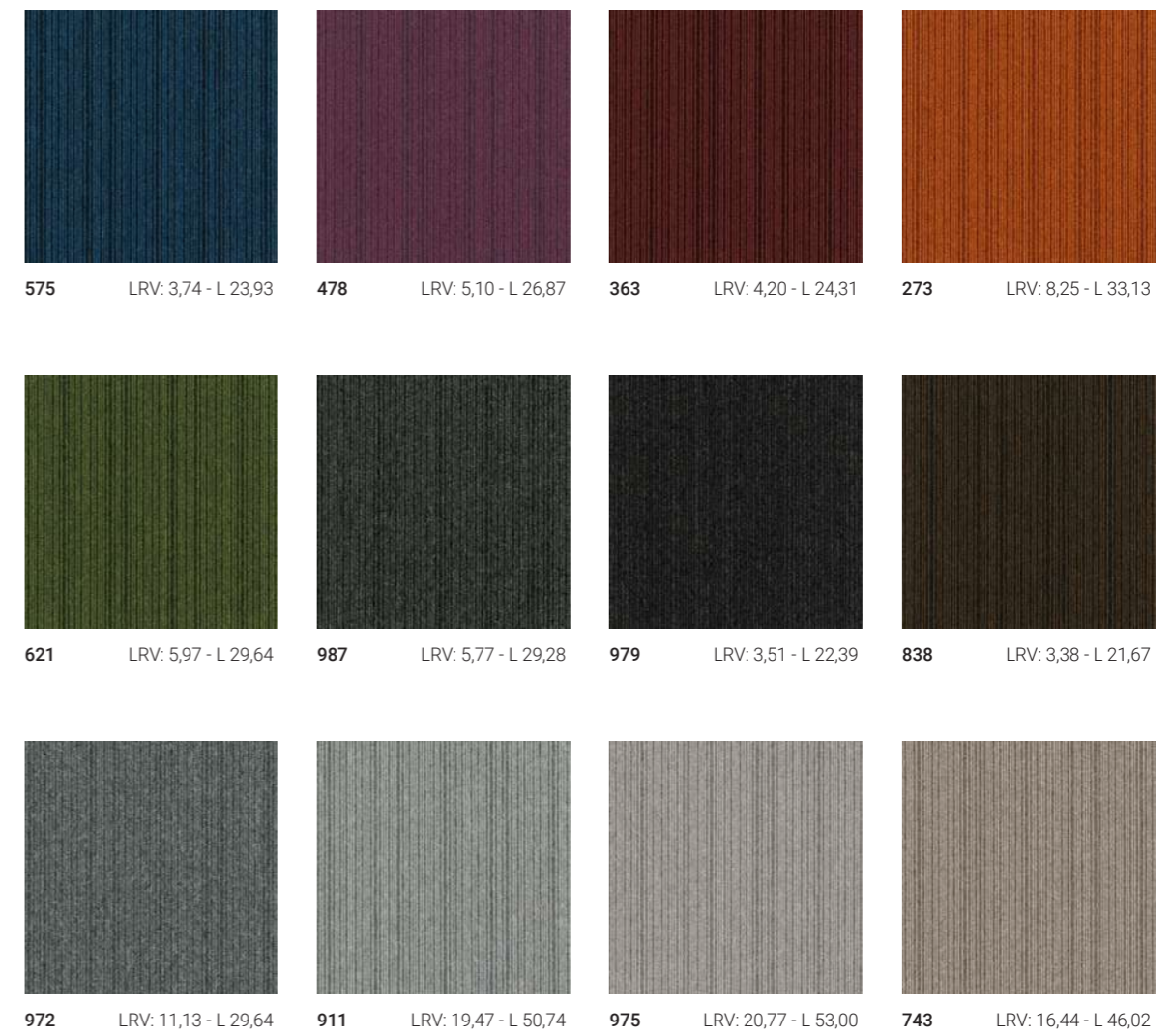
Expansion Point

Art Intervention

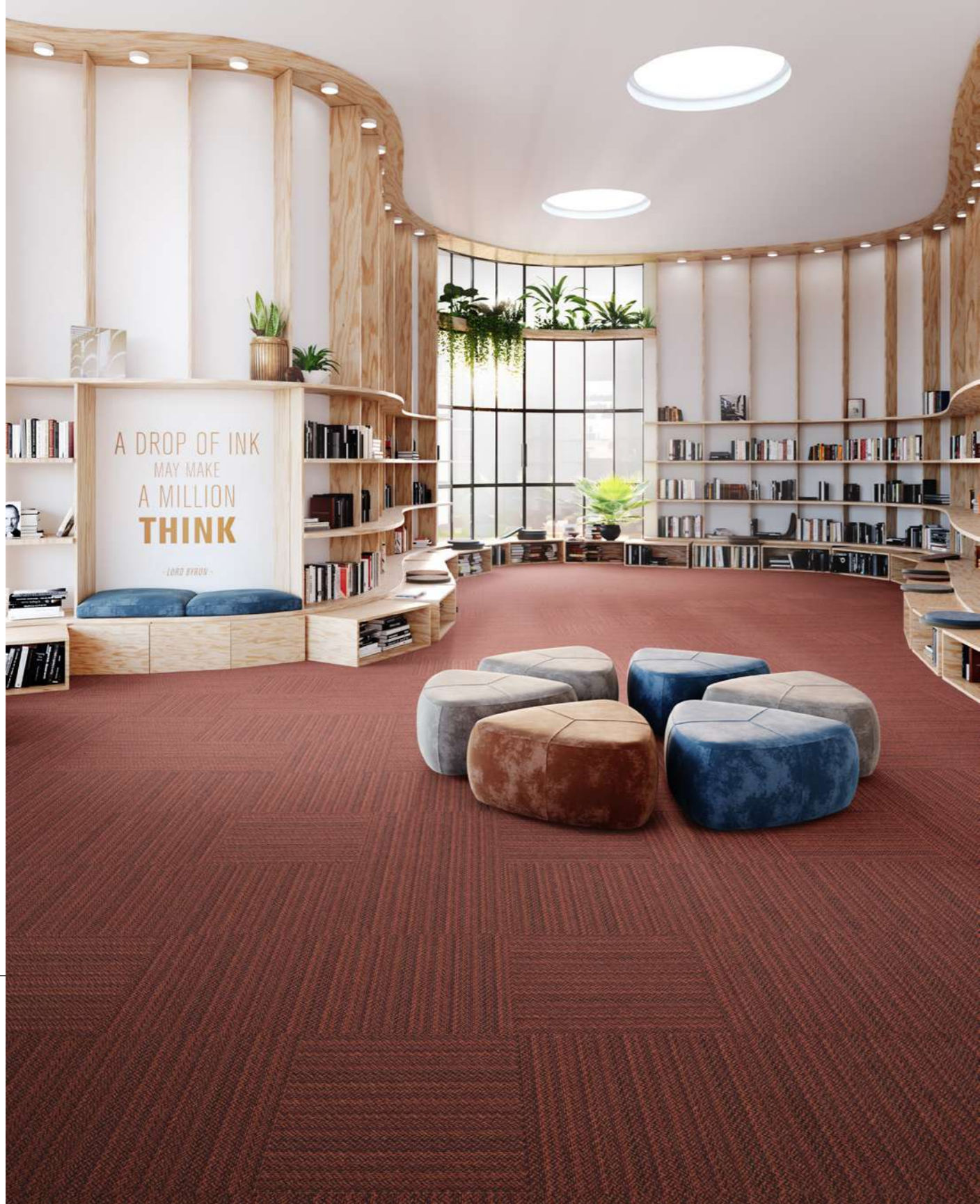
- Construction: tufted 1/10" gauge loop
- Backing: EcoFlex™ Statera
- Pile material: 100% solution dyed nylon
- Dimensions - m²/box: 50 x 50 cm - 5 m²

- Pile weight: ± 540 g/m²
- Pile thickness: ± 3,3 mm
- Total thickness: ± 6,6 mm
- Wear classification: 33 / LC21

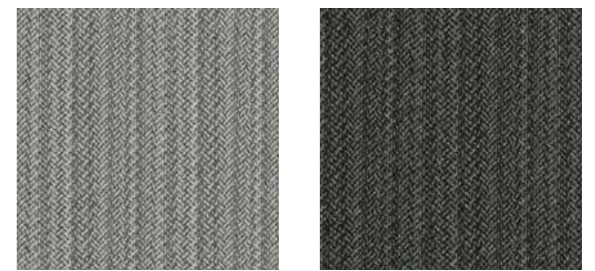
- Fire classification: Bfl-s1
- Impact sound reduction: ΔLw = 27 dB
- Sound absorption: 0,15 αw
- GUT-Prodís number: F6619831



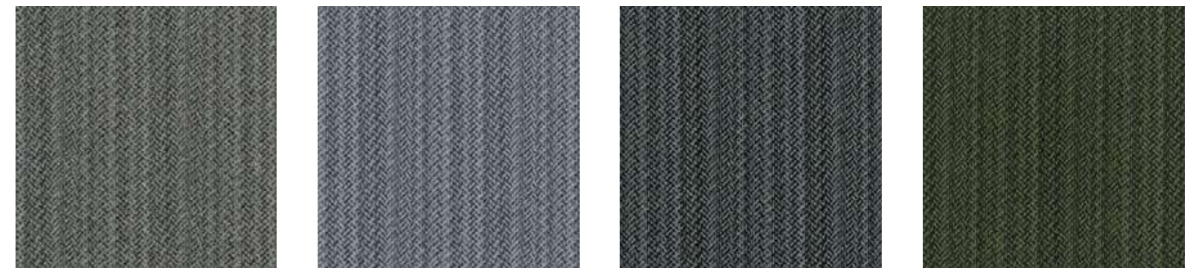
LRV = Light Reflectance Value according to BS 8493, L = according to CIE L*a*b* colour space



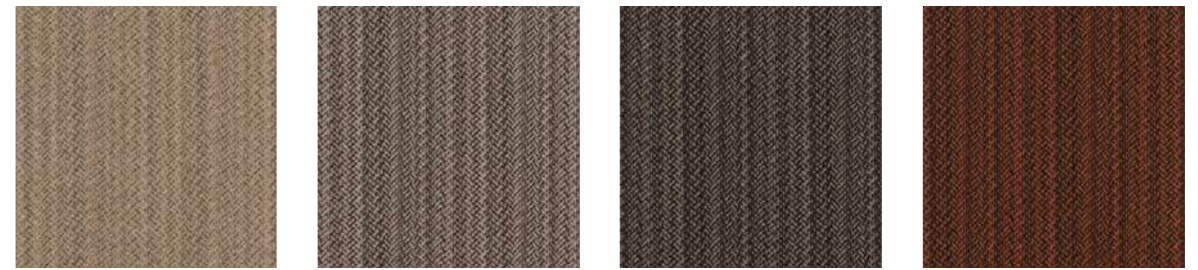
Blurred Edge



911 LRV: 17,78 - L 47,80 979 LRV: 5,08 - L 26,12



987 LRV: 8,18 - L 36,46 559 LRV: 13,19 - L 43,24 569 LRV: 6,37 - L 29,36 685 LRV: 4,11 - L 24,84



733 LRV: 15,59 - L 46,41 854 LRV: 8,74 - L 36,79 848 LRV: 5,35 - L 28,54 362 LRV: 4,06 - L 22,41

Blurred Edge

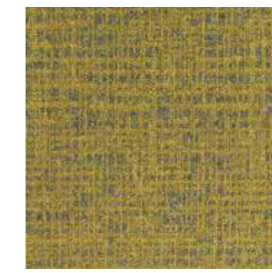
Art Intervention

- Construction: tufted 1/10" gauge loop
- Backing: EcoFlex™ Statera
- Pile material: 100% solution dyed nylon
- Dimensions - m²/box: 50 x 50 cm - 5 m²
- Pile weight: ± 540 g/m²
- Pile thickness: ± 2,5 mm
- Total thickness: ± 6,6 mm
- Wear classification: 33 / LC1
- Fire classification: Bfl-s1
- Impact sound reduction: ΔLw = 25 dB
- Sound absorption: 0,15 αw
- GUT-Prodix number: Ongoing

LRV = Light Reflectance Value according to BS 8493, L = according to CIE L*a*b* colour space



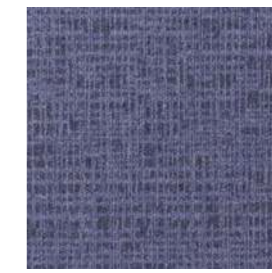
Balanced Hues



158 LRV: 12,45 - L 41,92



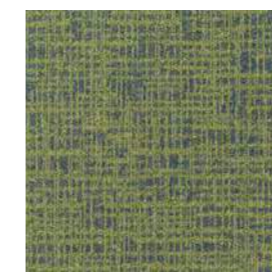
455 LRV: 6,85 - L 31,47



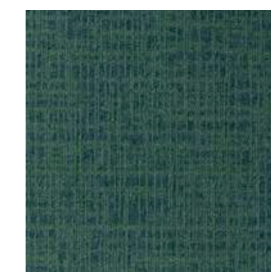
544 LRV: 8,35 - L 34,7



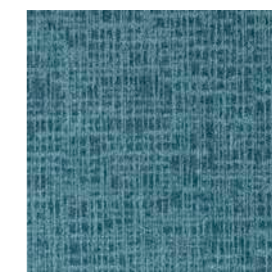
365 LRV: 4,43 - L 25,06



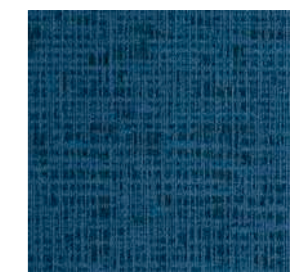
646 LRV: 8,21 - L 34,41



675 LRV: 5,73 - L 28,72



536 LRV: 12,64 - L 42,22



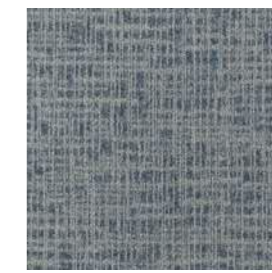
565 LRV: 5,38 - L 27,79



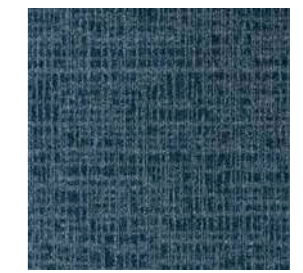
848 LRV: 11,07 - L 39,7



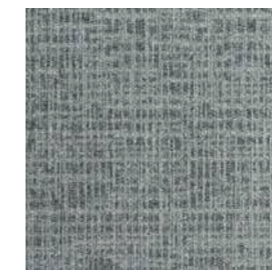
839 LRV: 9,83 - L 37,54



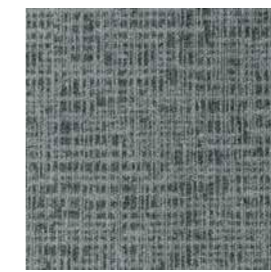
925 LRV: 11,31 - L 39,7



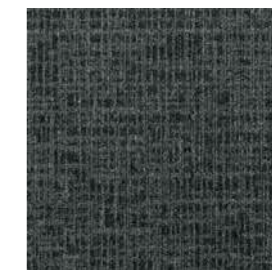
969 LRV: 5,97 - L 29,34



954 LRV: 12,83 - L 42,51



964 LRV: 10,23 - L 38,26



989 LRV: 5,31 - L 27,6



949 LRV: 3,28 - L 21,15

Balanced Hues

- Construction: tufted 1/12" gauge loop
- Backing: EcoFlex™ Statera
- Pile material: ColorStrand®
- 100% solution dyed Pa6 (40% recycled content)
- Dimensions - m²/box: 50 x 50 cm - 4,5 m²

- Pile weight: ± 720 g/m²
- Pile thickness: ± 3,9 mm
- Total thickness: ± 7 mm
- Wear classification: 33 / LC2

- Fire classification: Bfl-s1
- Impact sound reduction: ΔLw = 28 dB
- Sound absorption: 0,20 αw
- GUT-Prodix number: FA52FF8B

LRV = Light Reflectance Value according to BS 8493, L = according to CIE L*a*b* colour space



621

975

Perspective

Contour

- Construction: tufted 1/12" gauge loop
- Backing: EcoFlex™ Statera
- Pile material: 100% solution dyed nylon
- Dimensions - m²/box: 50 x 50 cm - 5 m²

- Pile weight: ± 600 g/m²
- Pile thickness: ± 3,1 mm
- Total thickness: ± 6,4 mm
- Wear classification: 33 / LC1

- Fire classification: Bfl-s1
- Impact sound reduction: ΔLw = 25 dB
- Sound absorption: 0,15 αw
- GUT-Prodís number: 6119BCAA



478 LRV: 5,26 - L 27,47



575 LRV: 4,20 - L 24,31



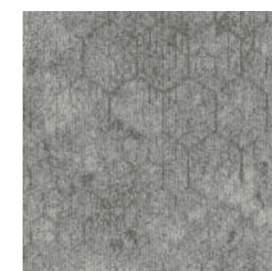
621 LRV: 6,08 - L 29,61



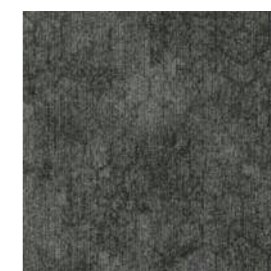
848 LRV: 7,79 - L 33,47



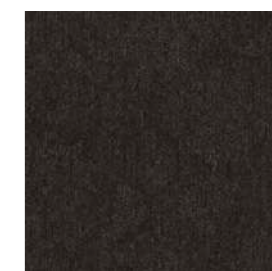
975 LRV: 23,07 - L 55,15



911 LRV: 22,47 - L 54,53



959 LRV: 7,31 - L 32,50



989 LRV: 3,22 - L 20,91

LRV = Light Reflectance Value according to BS 8493, L = according to CIE L*a*b* colour space



989

959

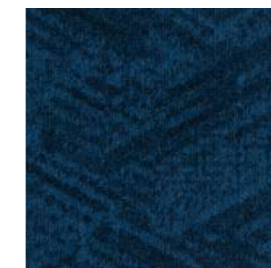
View

Contour

- Construction: tufted 1/12" gauge loop
- Backing: EcoFlex™ Statera
- Pile material: 100% solution dyed nylon
- Dimensions - m²/box: 50 x 50 cm - 5 m²
- Pile weight: ± 600 g/m²
- Pile thickness: ± 3,1 mm
- Total thickness: ± 6,4 mm
- Wear classification: 33 / LC1
- Fire classification: Bfl-s1
- Impact sound reduction: ΔLw = 25 dB
- Sound absorption: 0,15 αw
- GUT-Prodís number: CAC6CFE5



478 LRV: 5,75 - L 28,78



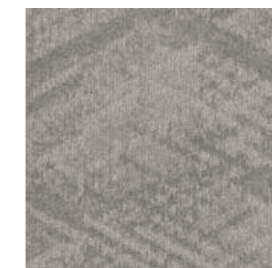
575 LRV: 4,87 - L 26,35



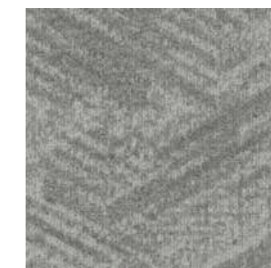
621 LRV: 6,59 - L 30,85



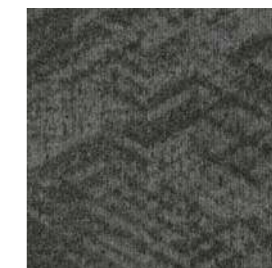
848 LRV: 6,49 - L 30,62



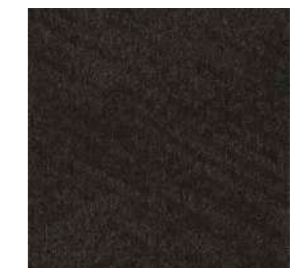
975 LRV: 23,86 - L 55,95



911 LRV: 23,07 - L 55,15

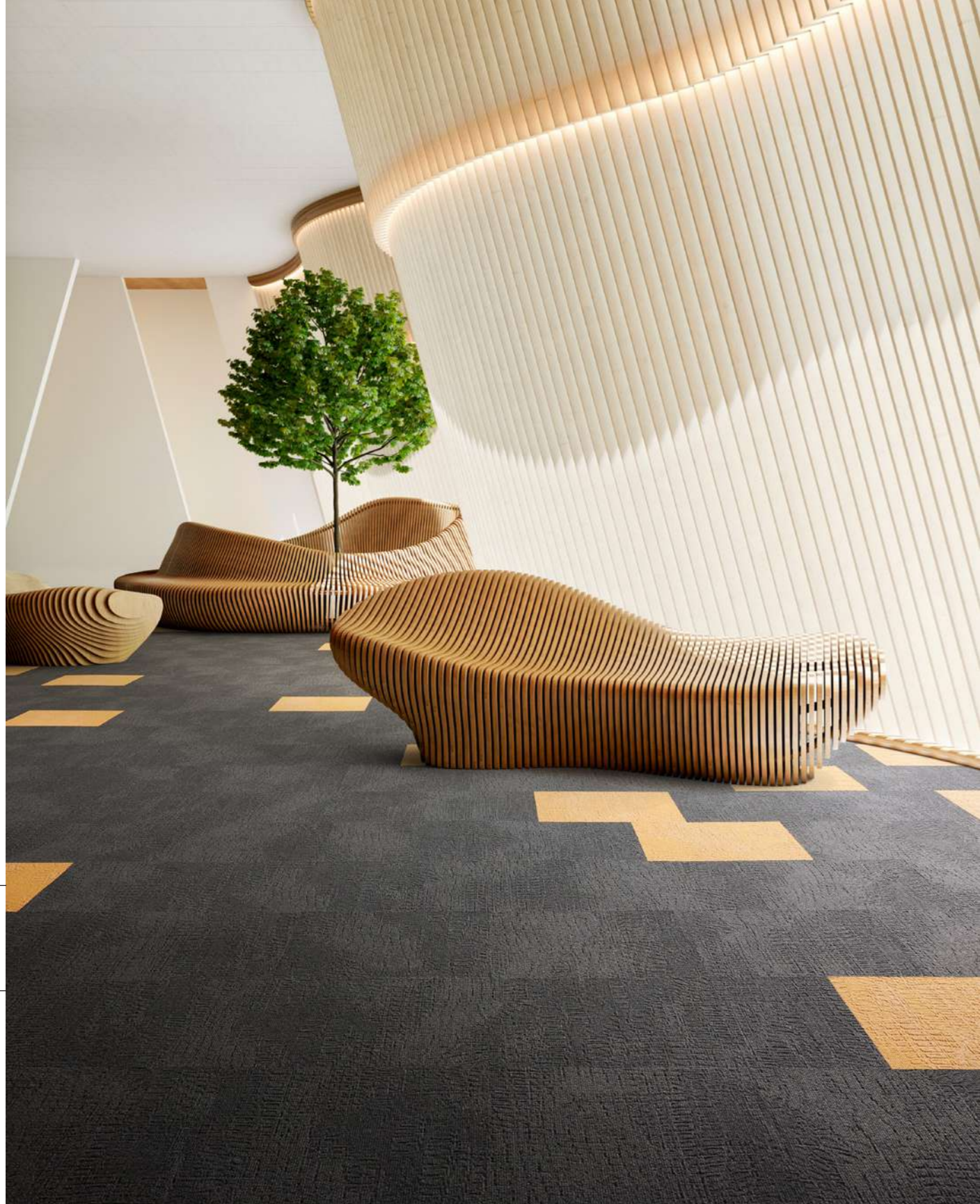


959 LRV: 7,81 - L 33,59



989 LRV: 2,92 - L 19,72

LRV = Light Reflectance Value according to BS 8493, L = according to CIE L*a*b* colour space



232 ○
848 ○

Alternate

Immersion

- Construction: tufted 1/12" gauge loop
- Backing: EcoFlex™ Statera
- Pile material: 100% SDN Thrive® Matter
- Dimensions - m²/box: 50 x 50 cm - 4,5 m²

- Pile weight: ± 700 g/m²
- Pile thickness: ± 3,4 mm
- Total thickness: ± 7,0 mm
- Wear classification: 33 / LC2

- Fire classification: Bfl-s1
- Impact sound reduction: ΔLw = 24 dB
- Sound absorption: 0,15 αw
- GUT-Prodix number: Ongoing

Alternate



140 LRV: 41,01 - L 70,19



232 LRV: 28,95 - L 60,74



467 LRV: 6,77 - L 31,29



474 LRV: 6,16 - L 29,81



574 LRV: 10,84 - L 39,31



621 LRV: 5,32 - L 27,64



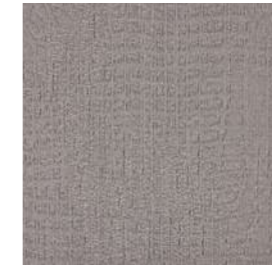
699 LRV: 3,52 - L 22,02



543 LRV: 3,74 - L 22,80



545 LRV: 18,01 - L 49,51



911 LRV: 25,49 - L 57,55



969 LRV: 16,01 - L 46,99



559 LRV: 10,89 - L 39,40



731 LRV: 24,64 - L 56,72



904 LRV: 14,51 - L 44,96



979 LRV: 11,31 - L 40,09



989 LRV: 5,74 - L 28,75

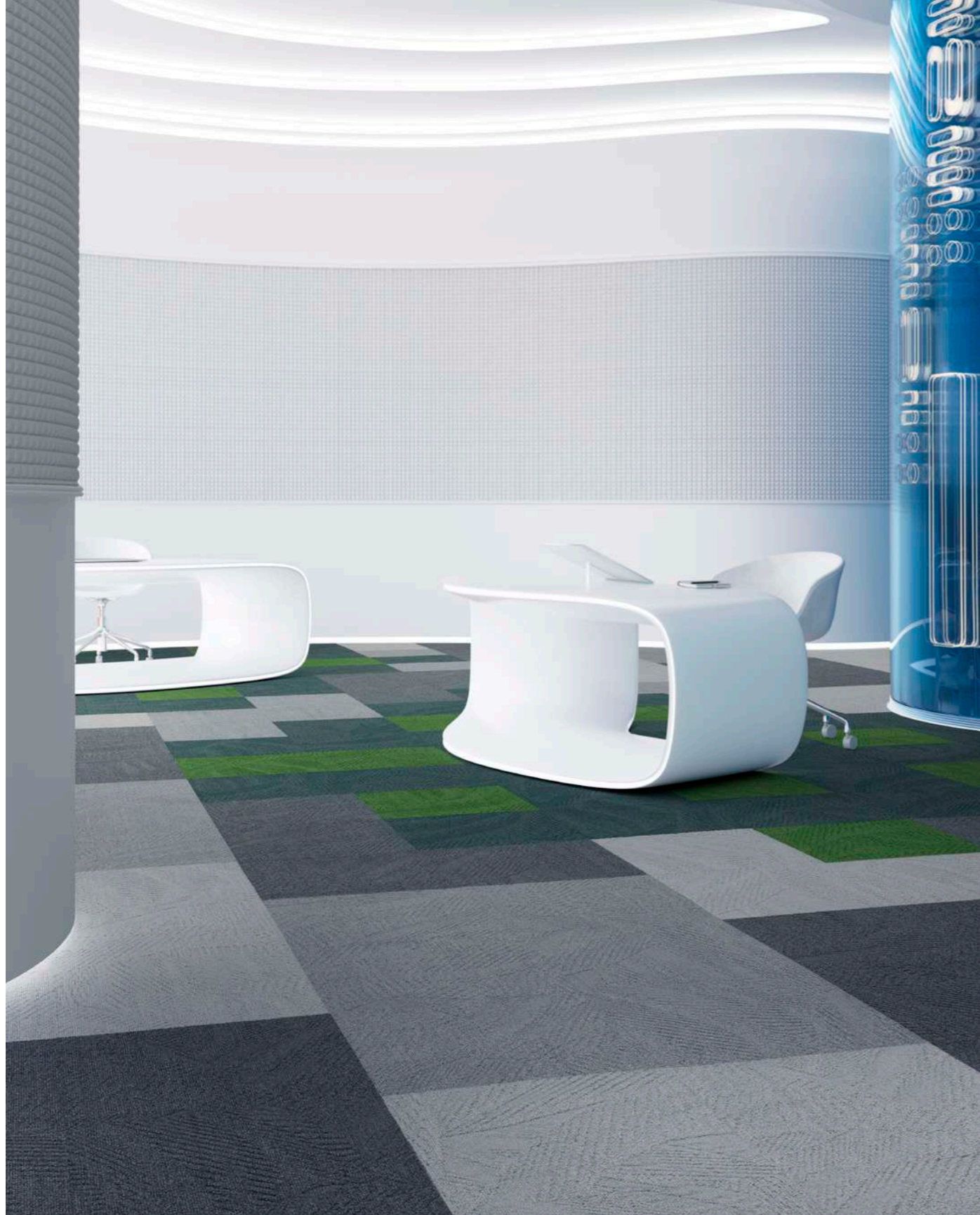


569 LRV: 5,59 - L 28,36



848 LRV: 4,55 - L 25,42

LRV = Light Reflectance Value according to BS 8493, L = according to CIE L*a*b* colour space



Multi colour mix

Liberate

Immersion

- Construction: tufted 1/12" gauge loop
- Backing: EcoFlex™ Statera
- Pile material: 100% SDN Thrive® Matter
- Dimensions - m²/box: 50 x 50 cm - 4,5 m²

- Pile weight: ± 700 g/m²
- Pile thickness: ± 3,3 mm
- Total thickness: ± 7,3 mm
- Wear classification: 33 / LC2

- Fire classification: Bfl-s1
- Impact sound reduction: ΔLw = 25 dB
- Sound absorption: 0,15 αw
- GUT-Prodís number: Ongoing

140 LRV: 41,01 - L 70,19	232 LRV: 28,95 - L 60,74	467 LRV: 6,77 - L 31,29	474 LRV: 6,16 - L 29,81
574 LRV: 10,84 - L 39,31	621 LRV: 5,32 - L 27,64	699 LRV: 3,52 - L 22,02	543 LRV: 3,74 - L 22,80
545 LRV: 18,01 - L 49,51	911 LRV: 25,49 - L 57,55	969 LRV: 16,01 - L 46,99	559 LRV: 10,89 - L 39,40
731 LRV: 24,64 - L 56,72	904 LRV: 14,51 - L 44,96	979 LRV: 11,31 - L 40,09	989 LRV: 5,74 - L 28,75
		569 LRV: 5,59 - L 28,36	848 LRV: 4,55 - L 25,42

LRV = Light Reflectance Value according to BS 8493, L = according to CIE L*a*b* colour space



Multi colour mix

Animate

Immersion

- Construction: tufted 1/12" gauge loop
- Backing: EcoFlex™ Statera
- Pile material: 100% SDN Thrive® Matter
- Dimensions - m²/box: 50 x 50 cm - 4,5 m²

- Pile weight: ± 700 g/m²
- Pile thickness: ± 3,3 mm
- Total thickness: ± 7,2 mm
- Wear classification: 33 / LC2

- Fire classification: Bfl-s1
- Impact sound reduction: ΔLw = 24 dB
- Sound absorption: 0,15 αw
- GUT-Prodix number: Ongoing



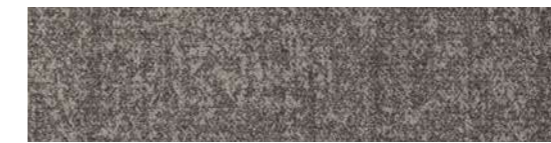
LRV = Light Reflectance Value according to BS 8493, L = according to CIE L*a*b* colour space



975 LRV: 21,33 - L 53,31



751 LRV: 30,19 - L 61,82



911 LRV: 20,27 - L 52,14



733 LRV: 15,13 - L 45,81



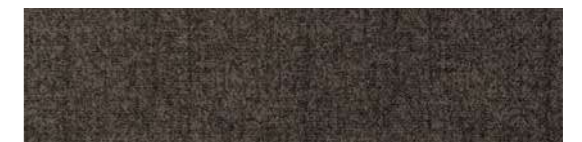
545 LRV: 21,83 - L 53,85



685 LRV: 11,20 - L 39,91



569 LRV: 10,31 - L 38,40



969 LRV: 9,67 - L 37,24



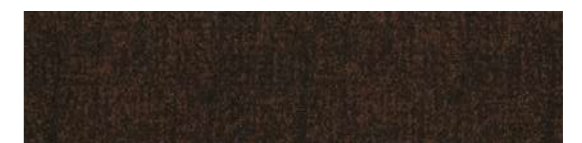
959 LRV: 7,69 - L 33,37



745 LRV: 11,36 - L 40,17



989 LRV: 5,30 - L 27,59



838 LRV: 3,05 - L 20,23

Grit

Imperfection

- Construction: 1/12" Pattern Perfect®
- Backing: EcoFlex™ Echo (94% recycled felt)
- Pile material: ECONYL® - 100% regenerated nylon
- Dimensions - m²/box: 25 x 100 cm - 4 m²

- Pile weight: ± 750 g/m²
- Pile thickness: ± 3,2 mm
- Total thickness: ± 8,6 mm
- Wear classification: 33 / LC2

- Fire classification: Bfl-s1
- Impact sound reduction: ΔLw = 29 dB
- Sound absorption: 0,25 aw
- GUT-Prodís number: Ongoing

LRV = Light Reflectance Value according to BS 8493, L = according to CIE L*a*b* colour space



969
989

Bruut

Imperfection

- Construction: 1/12" Pattern Perfect®
- Backing: EcoFlex™ Echo (94% recycled felt)
- Pile material: ECONYL® - 100% regenerated nylon
- Dimensions - m²/box: 25 x 100 cm - 4 m²

- Pile weight: ± 780 g/m²
- Pile thickness: ± 3,3 mm
- Total thickness: ± 8,7 mm
- Wear classification: 33 / LC2

- Fire classification: Bfl-s1
- Impact sound reduction: ΔLw = 31 dB
- Sound absorption: 0,30 aw
- GUT-Prodix number: Ongoing



975 LRV: 25,80 - L 57,85



751 LRV: 34,14 - L 65,07



911 LRV: 23,52 - L 55,61



733 LRV: 16,00 - L 46,97



545 LRV: 25,29 - L 57,36



685 LRV: 12,85 - L 42,53



569 LRV: 11,70 - L 40,74



969 LRV: 11,42 - L 40,27



959 LRV: 9,49 - L 36,91



745 LRV: 11,77 - L 40,85



989 LRV: 4,68 - L 25,79



838 LRV: 3,48 - L 21,88

LRV = Light Reflectance Value according to BS 8493, L = according to CIE L*a*b* colour space



Rupture

Imperfection

- Construction: 1/12" Pattern Perfect®
- Backing: EcoFlex™ Echo (94% recycled felt)
- Pile material: ECONYL® - 100% regenerated nylon
- Dimensions - m²/box: 25 x 100 cm - 4 m²
- Pile weight: ± 780 g/m²
- Pile thickness: ± 3,3 mm
- Total thickness: ± 8,7 mm
- Wear classification: 33 / LC2
- Fire classification: Bfl-s1
- Impact sound reduction: ΔLw = 30 dB
- Sound absorption: 0,30 aw
- GUT-Prodix number: Ongoing



975 LRV: 23,55 - L 55,63



751 LRV: 33,07 - L 64,22



911 LRV: 21,49 - L 53,48



733 LRV: 15,51 - L 46,32



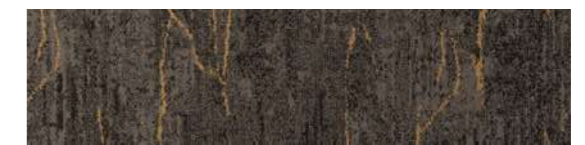
545 LRV: 25,02 - L 57,09



685 LRV: 12,32 - L 41,72



569 LRV: 11,23 - L 39,97



969 LRV: 11,58 - L 40,54



959 LRV: 9,02 - L 36,02



745 LRV: 12,97 - L 42,72



989 LRV: 5,23 - L 27,38



838 LRV: 5,64 - L 28,49

LRV = Light Reflectance Value according to BS 8493, L = according to CIE L*a*b* colour space



569
545

Basalt

Rudiments

- Construction: tufted 1/12" gauge loop
- Backing: EcoFlex™ Statera
- Pile material: 100% solution dyed nylon
- Dimensions - m²/box: 50 x 50 cm - 5 m²

- Pile weight: ± 600 g/m²
- Pile thickness: ± 3,1 mm
- Total thickness: ± 6,4 mm
- Wear classification: 33 / LC1

- Fire classification: Bfl-s1
- Impact sound reduction: ΔLw = 28 dB
- Sound absorption: 0,15 αw
- GUT-Prodís number: 65EB708B

Basalt



LRV = Light Reflectance Value according to BS 8493



959
989
159

Jute

Rudiments

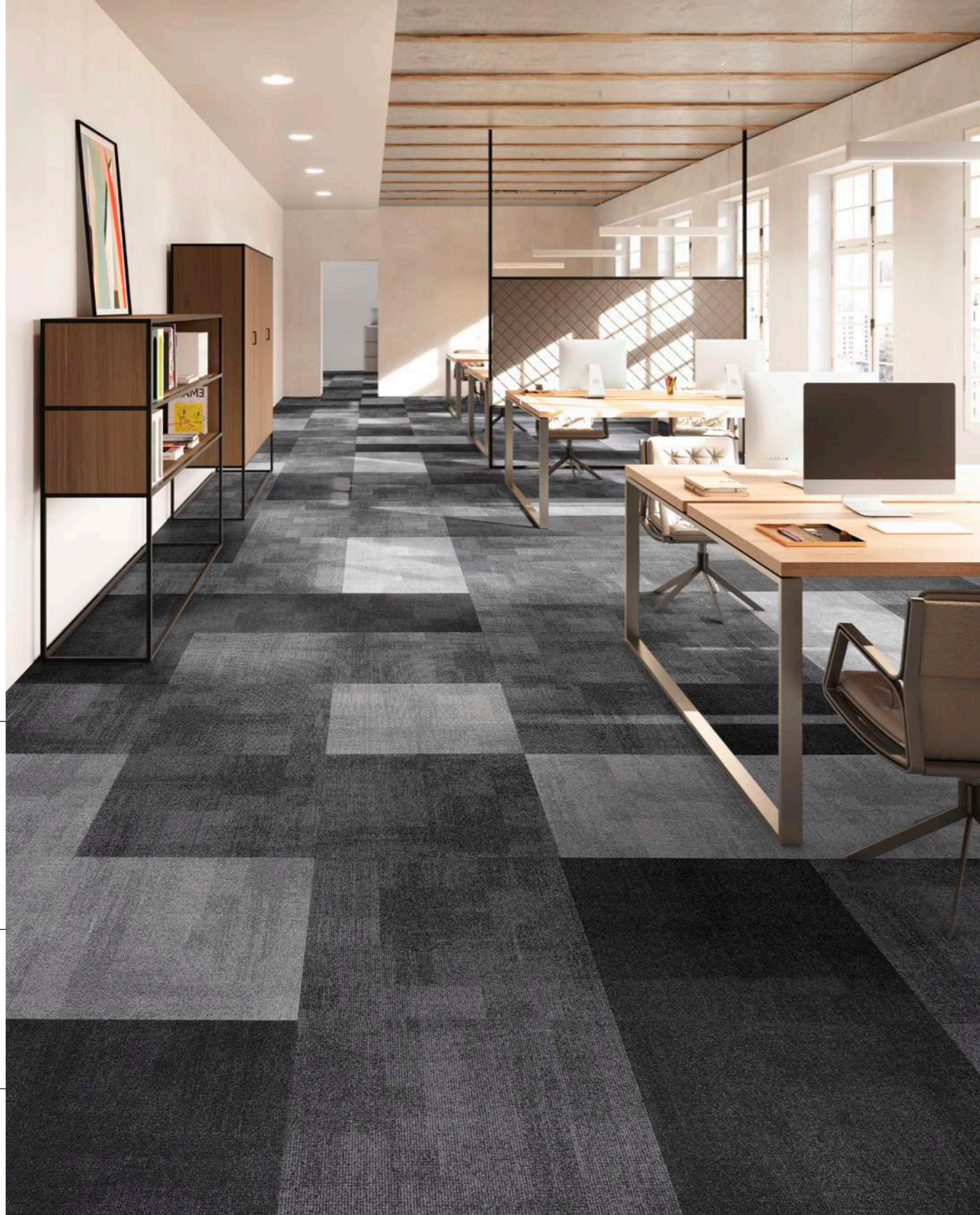
- Construction: tufted 1/12" gauge loop
- Backing: EcoFlex™ Statera
- Pile material: 100% solution dyed nylon
- Dimensions - m²/box: 50 x 50 cm - 5 m²

- Pile weight: ± 600 g/m²
- Pile thickness: ± 3,2 mm
- Total thickness: ± 6,4 mm
- Wear classification: 33 / LC2

- Fire classification: Bfl-s1
- Impact sound reduction: ΔLw = 28 dB
- Sound absorption: 0,15 αw
- GUT-Prodís number: 94EFCC68

363 LRV: 4,25	273 LRV: 9,24	159 LRV: 27,58	685 LRV: 5,45
989 LRV: 3,36	848 LRV: 5,84	789 LRV: 16,58	975 LRV: 21,79
959 LRV: 6,99	569 LRV: 7,31	545 LRV: 16,41	911 LRV: 18,20

LRV = Light Reflectance Value according to BS 8493, L = according to CIE L*a*b* colour space



959

911

989

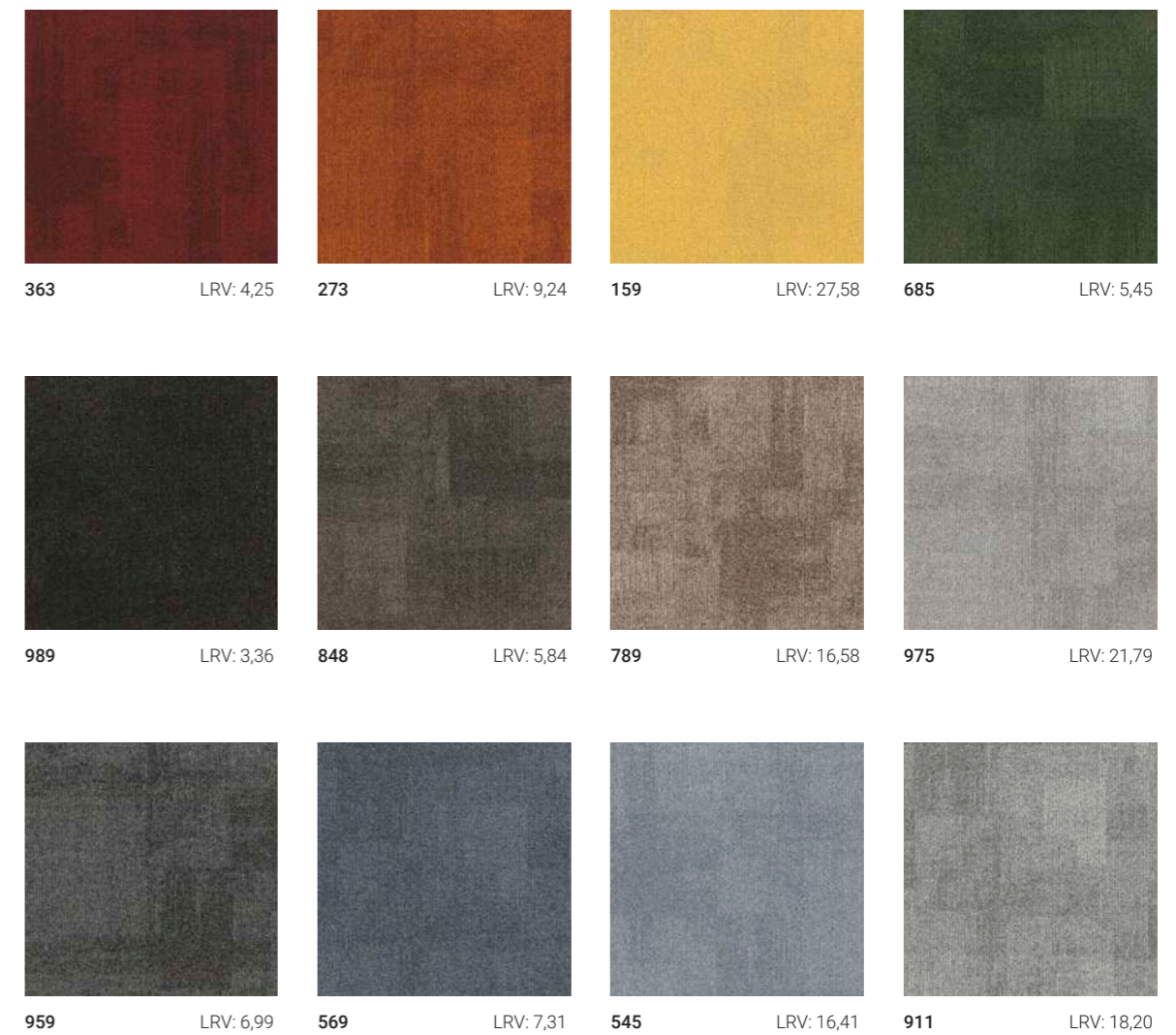
Teak

Rudiments

- Construction: tufted 1/12" gauge loop
- Backing: EcoFlex™ Statera
- Pile material: 100% solution dyed nylon
- Dimensions - m²/box: 50 x 50 cm - 5 m²

- Pile weight: ± 600 g/m²
- Pile thickness: ± 2,9 mm
- Total thickness: ± 6,4 mm
- Wear classification: 33 / LC1

- Fire classification: Bfl-s1
- Impact sound reduction: ΔLw = 28 dB
- Sound absorption: 0,15 αw
- GUT-Prodís number: AB56D646



LRV = Light Reflectance Value according to BS 8493, L = according to CIE L*a*b* colour space



Clay 911 - 975

Clay

Rudiments

- Construction: tufted 1/12" gauge loop
- Backing: EcoFlex™ Statera
- Pile material: 100% solution dyed nylon
- Dimensions - m²/box: 25 x 100 cm - 5 m²

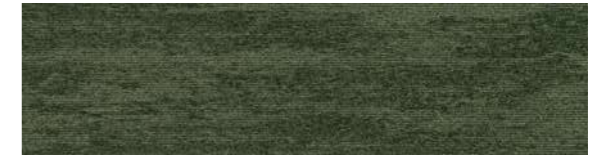
- Pile weight: ± 600 g/m²
- Pile thickness: ± 3,4 mm
- Total thickness: ± 7,1 mm
- Wear classification: 33 / LC1

- Fire classification: Bfl-s1
- Impact sound reduction: ΔLw = 28 dB
- Sound absorption: 0,15 αw
- GUT-Prodís number: E4C2F79C

Clay



975 LRV: 23,93 - L 54,94



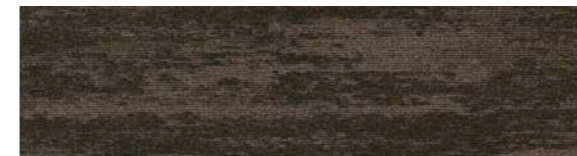
685 LRV: 5,19 - L 26,48



789 LRV: 15,48 - L 49,29



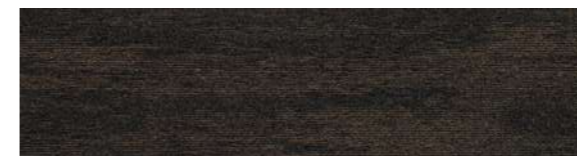
569 LRV: 8,75 - L 39,11



848 LRV: 6,41 - L 28,26



545 LRV: 16,32 - L 49,28



988 LRV: 2,70 - L 20,68



911 LRV: 22,14 - L 49,80



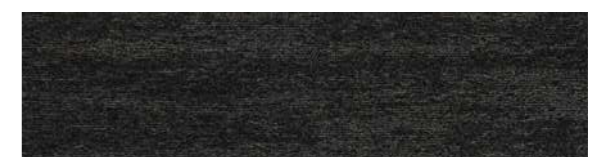
363 LRV: 3,76 - L 21,08



959 LRV: 8,92 - L 29,14



273 LRV: 8,08 - L 34,74



989 LRV: 3,40 - L 23,02

LRV = Light Reflectance Value according to BS 8493, L = according to CIE L*a*b* colour space



Clay Create 955 - 977 - 979

Clay Create

Rudiments

- Construction: tufted 1/12" gauge loop
- Backing: EcoFlex™ Statera
- Pile material: 100% solution dyed nylon
- Dimensions - m²/box: 25 x 100 cm - 5 m²

- Pile weight: ± 600 g/m²
- Pile thickness: ± 3,4 mm
- Total thickness: ± 7,1 mm
- Wear classification: 33 / LC1

- Fire classification: Bfl-s1
- Impact sound reduction: ΔLw = 28 dB
- Sound absorption: 0,15 αw
- GUT-Prodís number: 5E8698AB

Clay Create



977 LRV: 23,40 - L 54,85



699 LRV: 3,14 - L 22,84



872 LRV: 12,76 - L 39,73



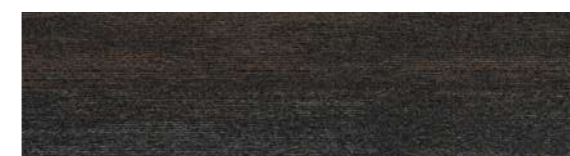
599 LRV: 3,03 - L 27,35



887 LRV: 2,97 - L 20,00



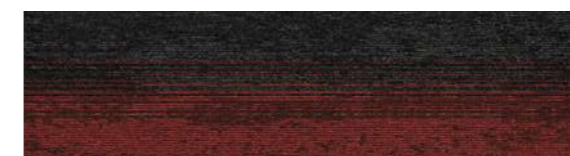
556 LRV: 11,63 - L 39,77



987 LRV: 5,01 - L 21,47



594 LRV: 16,70 - L 52,41



339 LRV: 3,48 - L 23,56



955 LRV: 10,18 - L 36,61



325 LRV: 7,46 - L 35,11



979 LRV: 4,79 - L 29,01

LRV = Light Reflectance Value according to BS 8493, L = according to CIE L*a*b* colour space



Metallic Clay 559 - 919 / Clay 569

Metallic Clay

Rudiments

- Construction: tufted 1/12" gauge loop
- Backing: EcoFlex™ Statera
- Pile material: 100% solution dyed nylon
- Dimensions - m²/box: 25 x 100 cm - 5 m²
- Pile weight: ± 600 g/m²
- Pile thickness: ± 3,4 mm
- Total thickness: ± 7,1 mm
- Wear classification: 33 / LC1
- Fire classification: Bfl-s1
- Impact sound reduction: ΔLw = 26 dB
- Sound absorption: 0,20 αw
- GUT-Prodix number: 9ADE6ED5

Metallic Clay



LRV = Light Reflectance Value according to BS 8493, L = according to CIE L*a*b* colour space



955

Step Up

- Construction: 5/32" Tip Sheared
- Backing: EcoFlex™ NXT
- Pile material: 100% Duracolor® Premium Nylon (30% recycled content)
- Dimensions - m²/box: 60,96 cm x 60,96 cm - 5,2 m²

- Pile weight: ± 1288 g/m²
- Pile thickness: ± 5,2 mm
- Total thickness: ± 9 mm
- Wear classification: 33 / LC3

- Fire classification: Bfl-s1
- Impact sound reduction: ΔLw = 29dB
- Sound absorption: In progress
- GUT-Prodin number: In progress



955

LRV: 5,16



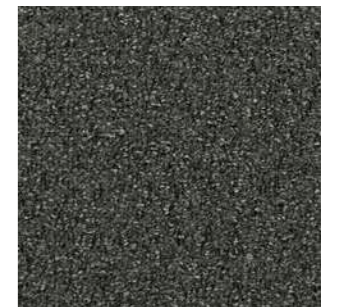
989

LRV: 2,51



859

LRV: 4,52



983

LRV: 3,20

LRV = Light Reflectance Value according to BS 8493



Innovative secondary backing

EcoFlex™ Echo

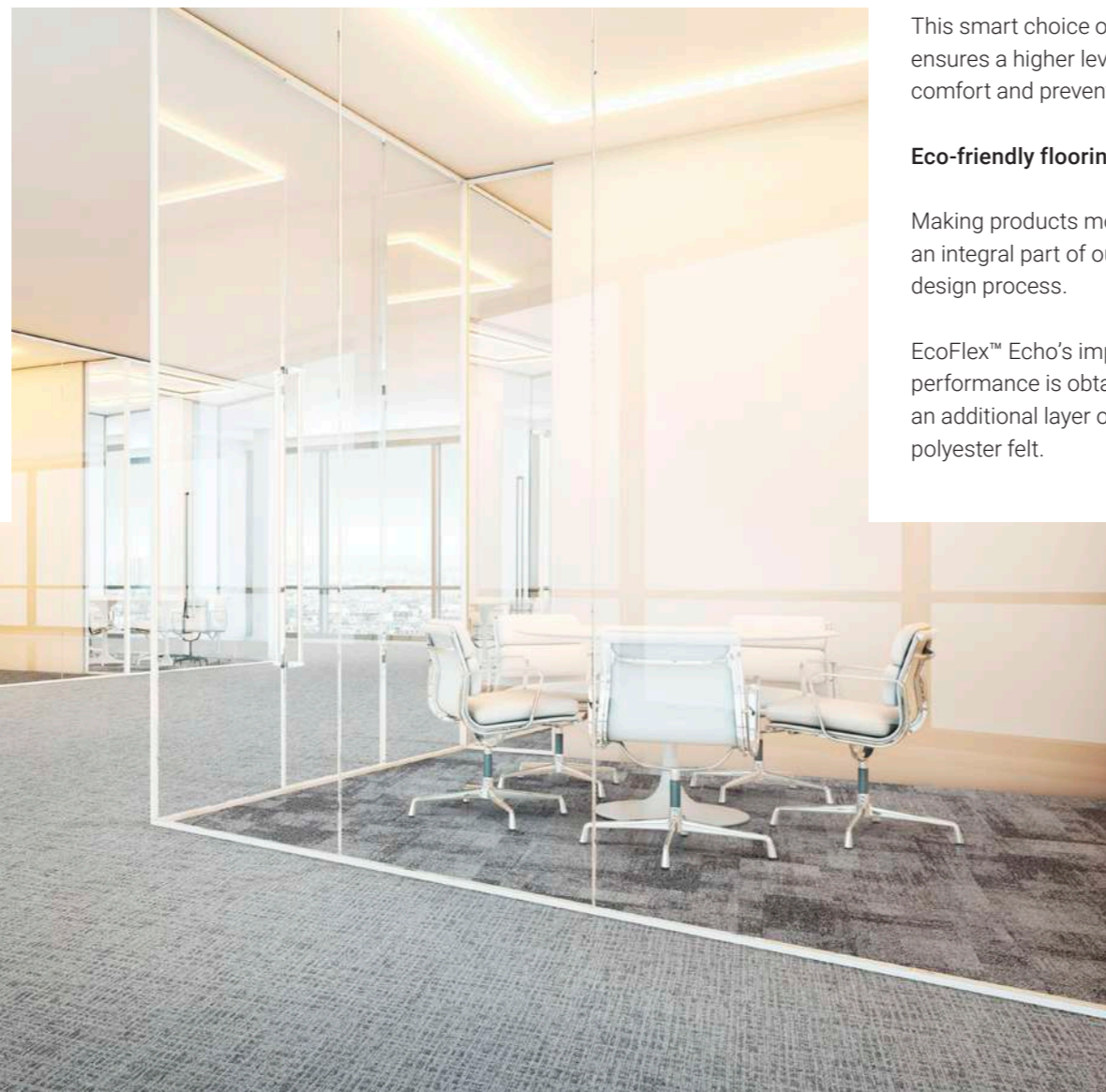
Backing every flooring project

At IVC Commercial we believe everyone is entitled to better acoustics and ergonomic comfort. That's why we've developed a superior backing that considers acoustic insulation, sound absorption and underfoot comfort.

So, when there's need for specific technical requirements regarding the acoustics of a space, EcoFlex™ Echo provides the answer.

Offering improved levels of impact sound reduction and sound absorption, EcoFlex™ Echo carpet tiles are built to last. Tested in accordance with the EN1307 standard, EcoFlex™ Echo delivers high quality in all aspects, from dimensional stability and burning behaviour to a perfect seam finish.

Standard IVC Commercial Carpet Tiles with the EcoFlex™ Statera backing system are also developed with attention to acoustic properties. They offer a qualitative solution for projects where no specific values are required.



Going beyond acoustics

Composed for improved comfort

Dedicated to the future of flooring and the lasting comfort of our customers, we are continuously committed to ensuring the long-term quality of our products.

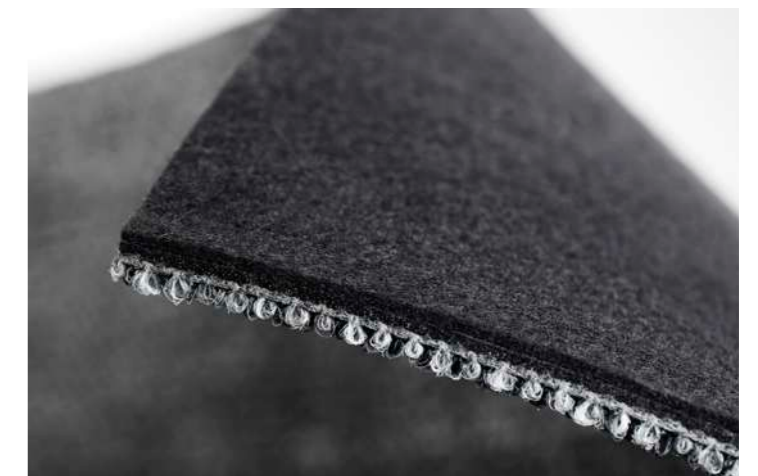
This smart choice of material also ensures a higher level of underfoot comfort and prevents muscle fatigue.

Eco-friendly flooring

Making products more sustainable is an integral part of our innovation and design process.

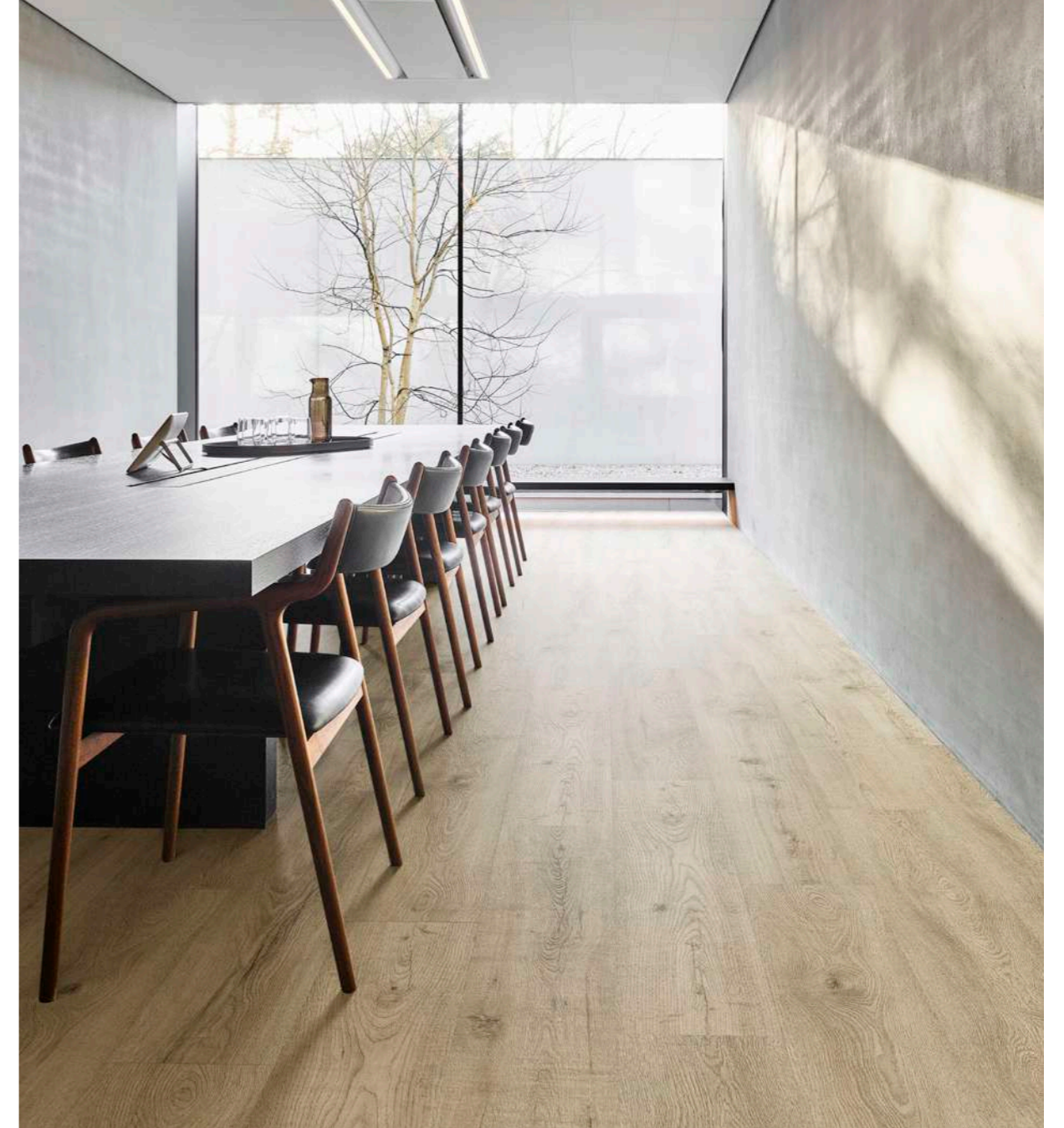
EcoFlex™ Echo's improved acoustic performance is obtained through an additional layer of 94% recycled polyester felt.

Improved performance and underfoot comfort is obtained through a **94% recycled polyester felt** layer



Standard acoustic offer

EcoFlex Echo is available on a selection of products in a variety of colours from stock. The backing can be specified on other carpet tiles subject to a minimum order quantity



Heterogeneous Vinyl

Easy, durable, versatile

Our sheet vinyl collections are the solution for a stunning floor that's easy to install and maintain. Use them for all your projects; retail, offices, day care centres, social housing, and even schools. Wet jackets, muddy shoes and noisy students are no problem; our heterogeneous vinyl is at the top of its class when it comes to durability, hygiene and acoustic performance.

Luxury Vinyl Tiles

Each plank has its own personality

Our LVT collections reflect the unique patterns and textures found in nature, while offering you the easy installation and maintenance of vinyl floors. The abundance of designs to choose from – oak, teak, concrete and granite are only a few of them – give you the freedom to create truly unique spaces. We've even adapted the shape of our planks to match your project's needs. From triangular to octagonal boards: we'll make them for you.

Easy installation

Flawless combinations

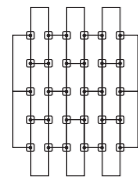
Finding the right floor for your project is one thing, but installing it can be a cumbersome process. Not to worry: IVC hands you the tools to ease this step.

FlexLok

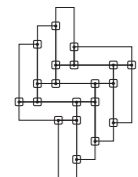
The innovative FlexLok system is the ideal alternative to traditional adhesive installation methods. The odorless dry technique virtually eliminates harmful VOCs and can be used on all underlays, for all IVC carpet tiles. Rely on FlexLok for a fast, easy installation of flexible, floating floors, without any glue. Moreover, the FlexLok system is Declare, HPD & DRI Green label certified.



Installing planks

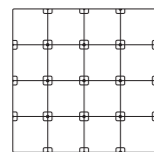


Lay the first row of planks and put FlexLok pads at each joint, adhesive side up. Install the remaining carpet tiles, placing FlexLok tabs as illustrated in the image.

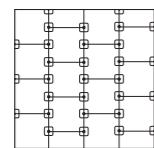


For herringbone designs, put FlexLok pads on each corner, adhesive side up.

Installing tiles



Quarter turn, monolithic, and multi-directional
Put FlexLok pads at each corner of the tiles, adhesive side up.



Brick and Ashlar
Lay the first row of planks and put FlexLok pads at each joint, adhesive side up. Install the remaining carpet tiles, placing FlexLok tabs as illustrated in the image.



“

Our broad portfolio of 100% in-house designed Carpet Tiles, Luxury Vinyl Tiles and Heterogeneous Vinyl undoubtedly holds the key for your project.

What's more, you can combine our Luxury Vinyl Tiles, Heterogeneous Vinyl and Carpet Tiles to create a layout that works for your space.”

Future-proof, for you and for the planet

At IVC Group, we truly believe in products that are developed with the future in mind. That's why we take the time to pause and reflect on the impacts of our entire strategy and operation. But we also realise that actions speak louder than words, so here's how we raise the industry standard for sustainability, day after day.

“

Through our certified processes, skilled and inspired people and product portfolio that combines good value and corporate social responsibility, we really make the difference, for you and for the planet.”

- Through resource conservation and waste reduction, we minimise the environmental impact of our manufacturing and distribution operations.
- Our energy-efficient flooring plants are among the leanest and greenest in their class.
- To get our products to you, inland waterways are the logical choice.
- We invest in clean-air technology and cutting-edge manufacturing methods.
- We use as many recycled or renewable materials as possible – think of eco-friendly inks and recycled PVC.
- We hold all suppliers accountable for ensuring that products are made in a responsible manner – one that respects both labour and environment.



Get in touch

Want to learn more about IVC Commercial's flooring solutions, or need help tackling an exciting project? We've got you covered.

Go to [ivc-commercial.com](https://www.ivc-commercial.com) to browse our collections, order samples, download inspirational brochures or stop by one of our showrooms. You can also make an appointment with our dedicated team by sending us an email via info@ivc-commercial.com. Get in touch!

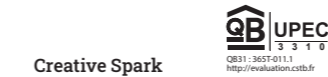
Follow us on     



Technical Specifications

Spécifications techniques - Technische specificaties - Technische Spezifikationen

Construction Structure - Structuur - Konstruktion	
Pile fibre composition Composition des fibres - Poolmateriaal - Material der Polnutschicht	
Secondary backing Envers - Rug - Beschichtung	
Total weight Poids total - Totaal gewicht - Gesamtgewicht	
Pile weight Poids du velours - Poolgewicht - Poleinsatzgewicht	
Surface pile weight Poids du velours utile - Effectieve poolmassa - Polnutschichtgewicht	
Total thickness Epaisseur totale - Totale dikte - Gesamtdicke	
Surface pile thickness Hauteur du velours - Poolhoogte - Poldicke	
Surface pile density Densité du velours - Pooldichtheid - Polrohndichte	
Number of tufts Nombre de boucles - Aantal noppen - Noppenzahl	
Wear classification Classement d'usage - Gebruiksklasse - Beanspruchungsklasse	EN 1307
Castor chair suitability Résistance aux chaises à roulettes - Rolstoelgeschiktheid - Stuhllolleneignung	EN 985
Fire classification Comportement au feu - Brandgedrag - Brandklasse	EN 13501-1
Dimensional stability Stabilité dimensionnelle - Dimensionele stabiliteit - Dimensionsstabilität	EN 986
Colour fastness to light Solidité des couleurs à la lumière - Lichtbestendigheid van de kleuren - Lichtechtheit	EN ISO 105-B02
Rubbing fastness Solidité au frottement - Wrijftechtheid - Reibechtheit	EN ISO 105-X12
Colour fastness to water Solidité à l'eau - Waterechtheid - Wasserechtheit	EN ISO 105-E01
Thermal resistance Résistance thermique - Warmtedoorlaatweerstand - Wärmedurchlasswiderstand	ISO 8302
Sound absorption Absorption phonique - Geluidsabsorptie - Schallabsorptionsgrad	EN ISO 354
Impact sound reduction Réduction phonique aux bruits d'impacts - Reductie contactgeluid - Trittschallverbesserungsmaß	EN ISO 10140-3
Permanent antistatic Antistatique permanent - Permanent antistatisch - Permanent antistatisch	ISO 6356
Number of colours Nombre de coloris - Aantal kleuren - Anzahl der Farben	
Size & Packaging Dimensions & Emballage - Formaat en verpakking - Abmessungen & Verpackung	
GUT-Prodís Number Numéro GUT Prodís - Nummer GUT Prodís - GUT-Prodís Nummer	
Warranty years Garantie ans - Garantie in jaren - Garantie Jahren	



Creative Spark
Tufted 1/10" gauge loop
100% solution dyed nylon
EcoFlex™ Statera (modified bitumen, 70% recycled content)
± 4100 g/m ²
± 540 g/m ²
± 370 g/m ²
± 6,3 mm
± 3,1 mm
± 0,119 g/cm ³
176.300/ m ²
33 / LC1
A: intensive use
Bfl-s1
≤ 0,2%
≥ 7
≥ 4
≥ 4
0,072 m ² .K/W
0,15 a w
Hz 125 250 500 1000 2000 4000 a s -0,01 0,00 0,06 0,17 0,25 0,34
ΔLw = 32 dB
≤ 2 kV
32
50 x 50 cm 5 m ² /box - 24 boxes/pallet
3AA1D4DF
15

Expansion Point

Tufted 1/10" gauge loop
100% solution dyed nylon
EcoFlex™ Statera (modified bitumen, 70% recycled content)
± 4300 g/m ²
± 540 g/m ²
± 401 g/m ²
± 6,6 mm
± 3,3 mm
± 0,123 g/cm ³
172.200/ m ²
33 / LC2
A: intensive use
Bfl-s1
≤ 0,2%
≥ 7
≥ 4
≥ 4
0,0687 m ² .K/W
0,15 a w
Hz 125 250 500 1000 2000 4000 a s -0,03 0,07 0,06 0,18 0,37 0,44
ΔLw = 27 dB
≤ 2 kV
12
50 x 50 cm 5 m ² /box - 24 boxes/pallet
F6619831
15

Blurred Edge

Tufted 1/10" gauge loop
100% solution dyed nylon
EcoFlex™ Statera (modified bitumen, 70% recycled content)
± 5000 g/m ²
± 540 g/m ²
± 310 g/m ²
± 6,6 mm
± 2,5 mm
± 0,124 g/cm ³
168.100/ m ²
33 / LC1
A: intensive use
Bfl-s1
≤ 0,2%
≥ 7
≥ 4
≥ 4
0,0643 m ² .K/w
0,15 a w
Hz 125 250 500 1000 2000 4000 a w 0,02 0,03 0,06 0,19 0,31 0,37
ΔLw = 25 dB
≤ 2 kV
10
50 x 50 cm 5 m ² /box - 24 boxes/pallet
Ongoing
15



Technical Specifications

Spécifications techniques - Technische specificaties - Technische Spezifikationen

Construction Structure - Structuur - Konstruktion	
Pile fibre composition Composition des fibres - Poolmateriaal - Material der Polnutzschicht	
Secondary backing Envers - Rug - Beschichtung	
Total weight Poids total - Totaal gewicht - Gesamtgewicht	
Pile weight Poids du velours - Poolgewicht - Poleinsatzgewicht	
Surface pile weight Poids du velours utile - Effectieve poolmassa - Polnutzschichtgewicht	
Total thickness Epaisseur totale - Totale dikte - Gesamtdicke	
Surface pile thickness Hauteur du velours - Poolhoogte - Poldicke	
Surface pile density Densité du velours - Pooldichtheid - Polrohndichte	
Number of tufts Nombre de boucles - Aantal noppen - Noppenzahl	
Wear classification Classement d'usage - Gebruiksklasse - Beanspruchungsklasse	EN 1307
Castor chair suitability Résistance aux chaises à roulettes - Rolstoelgeschiktheid - Stuhllolleneignung	EN 985
Fire classification Comportement au feu - Brandgedrag - Brandklasse	EN 13501-1
Dimensional stability Stabilité dimensionnelle - Dimensionele stabiliteit - Dimensionsstabilität	EN 986
Colour fastness to light Solidité des couleurs à la lumière - Lichtbestendigheid van de kleuren - Lichtechtheit	EN ISO 105-B02
Rubbing fastness Solidité au frottement - Wrijftechtheid - Reibechtheit	EN ISO 105-X12
Colour fastness to water Solidité à l'eau - Waterechtheid - Wasserechtheit	EN ISO 105-E01
Thermal resistance Résistance thermique - Warmtedoorlaatweerstand - Wärmedurchlasswiderstand	ISO 8302
Sound absorption Absorption phonique - Geluidsabsorptie - Schallabsorptionsgrad	EN ISO 354
Impact sound reduction Réduction phonique aux bruits d'impacts - Reductie contactgeluid - Trittschallverbesserungsmaß	EN ISO 10140-3
Permanent antistatic Antistatique permanent - Permanent antistatisch - Permanent antistatisch	ISO 6356
Number of colours Nombre de coloris - Aantal kleuren - Anzahl der Farben	
Size & Packaging Dimensions & Emballage - Formaat en verpakking - Abmessungen & Verpackung	
GUT-Prodís Number Numéro GUT Prodís - Nummer GUT Prodís - GUT-Prodís Nummer	
Warranty years Garantie ans - Garantie in jaren - Garantie Jahren	

Balanced Hues	Perspective	View	Step Up
Tufted 1/12" gauge loop	Tufted 1/12" gauge loop	Tufted 1/12" gauge loop	5/32" Tip Sheared
100% Colorstrand® Premium Nylon (40% recycled content) 100% solution dyed Pa6	100% solution dyed nylon	100% solution dyed nylon	100% Duracolor® Premium Nylon (30% recycled content)
EcoFlex™ Statera (modified bitumen, 70% recycled content)	EcoFlex™ Statera (modified bitumen, 70% recycled content)	EcoFlex™ Statera (modified bitumen, 70% recycled content)	EcoFlex™ NXT
± 4495 g/m²	± 4400 g/m²	± 4400 g/m²	± 4575 g/m²
± 720 g/m²	± 600 g/m²	± 600 g/m²	± 1288 g/m²
± 483 g/m²	± 380 g/m²	± 388 g/m²	± 754 g/m²
± 7 mm	± 6,4 mm	± 6,4 mm	± 9 mm
± 3,9 mm	± 3,1 mm	± 3,1 mm	± 5,2 mm
± 0,125 g/cm³	± 0,123 g/cm³	± 0,125 g/cm³	± 0,145 g/cm³
244.800/m²	209.100/m²	229.500/m²	93.600/m²
33 / LC2	33 / LC1	33 / LC1	33 / LC3
A: intensive use	A: intensive use	A: intensive use	A: intensive use
Bfl-s1	Bfl-s1	Bfl-s1	Bfl-s1
≤ 0,2%	≤ 0,2%	≤ 0,2%	≤ 0,2%
≥ 7	≥ 7	≥ 7	≥ 7
≥ 4	≥ 4	≥ 4	≥ 4
≥ 4	≥ 4	≥ 4	≥ 4
0,0798 m².K/W	0,068 m².K/W	0,067 m².K/W	0,099 m².K/W
0,20 a _w	0,15 a _w	0,15 a _w	In progress
Hz 125 250 500 1000 2000 4000 a _s 0,00 0,02 0,08 0,24 0,36 0,40	Hz 125 250 500 1000 2000 4000 a _s 0,00 0,02 0,06 0,20 0,33 0,42	Hz 125 250 500 1000 2000 4000 a _s 0,00 0,02 0,06 0,20 0,30 0,39	
ΔL _w = 28 dB	ΔL _w = 25 dB	ΔL _w = 25 dB	ΔL _w = 29dB
≤ 2 kV	≤ 2 kV	≤ 2 kV	≤ 2 kV
16	8	8	4
50 x 50 cm 4,5 m²/box - 24 boxes/pallet	50 x 50 cm 5 m²/box - 24 boxes/pallet	50 x 50 cm 5 m²/box - 24 boxes/pallet	60,96 cm x 60,96 cm (24"x24") 5,2 m²/box
FA52FF8B	6119BCAA	CAC6CFE5	In progress
15	15	15	15



FLEXLOK

Technical Specifications

Spécifications techniques - Technische specificaties - Technische Spezifikationen

Construction Structure - Structuur - Konstruktion	
Pile fibre composition Composition des fibres - Poolmateriaal - Material der Polnutzschicht	
Secondary backing Envers - Rug - Beschichtung	
Total weight Poids total - Totaal gewicht - Gesamtgewicht	
Pile weight Poids du velours - Poolgewicht - Poleinsatzgewicht	
Surface pile weight Poids du velours utile - Effectieve poolmassa - Polnutzschichtgewicht	
Total thickness Epaisseur totale - Totale dikte - Gesamtdicke	
Surface pile thickness Hauteur du velours - Poolhoogte - Poldicke	
Surface pile density Densité du velours - Pooldichtheid - Polrohdichte	
Number of tufts Nombre de boucles - Aantal noppen - Noppenzahl	
Wear classification Classement d'usage - Gebruiksklasse - Beanspruchungsklasse	EN 1307
Castor chair suitability Résistance aux chaises à roulettes - Rolstoelgeschiktheid - Stuhlrolleneignung	EN 985
Fire classification Comportement au feu - Brandgedrag - Brandklasse	EN 13501-1
Dimensional stability Stabilité dimensionnelle - Dimensionele stabiliteit - Dimensionsstabilität	EN 986
Colour fastness to light Solidité des couleurs à la lumière - Lichtbestendigheid van de kleuren - Lichtechtheit	EN ISO 105-B02
Rubbing fastness Solidité au frottement - Wrijftechtheid - Reibechtheit	EN ISO 105-X12
Colour fastness to water Solidité à l'eau - Waterechtheid - Wasserechtheit	EN ISO 105-E01
Thermal resistance Résistance thermique - Warmtedoorlaatweerstand - Wärmedurchlasswiderstand	ISO 8302
Sound absorption Absorption phonique - Geluidsabsorptie - Schallabsorptionsgrad	EN ISO 354
Impact sound reduction Réduction phonique aux bruits d'impacts - Reductie contactgeluid - Trittschallverbesserungsmaß	EN ISO 10140-3
Permanent antistatic Antistatique permanent - Permanent antistatisch - Permanent antistatisch	ISO 6356
Number of colours Nombre de coloris - Aantal kleuren - Anzahl der Farben	
Size & Packaging Dimensions & Emballage - Formaats en verpakking - Abmessungen & Verpackung	
GUT-Prodís Number Numéro GUT Prodís - Nummer GUT Prodís - GUT-Prodís Nummer	
Warranty years Garantie ans - Garantie in jaren - Garantie Jahren	

Alternate

Tufted 1/12" gauge loop
100% SDN Thrive® Matter (90% recycled content)
EcoFlex™ Statera (modified bitumen, 70% recycled content)
± 4500 g/m ²
± 700 g/m ²
± 484 g/m ²
± 7,0 mm
± 3,4 mm
± 0,142 g/cm ³
224.400/m ²
33 / LC2
A: intensive use
Bfl-s1
≤ 0,2%
≥ 7
≥ 4
≥ 4
0,072 m ² .K/W
0,15 αw
Hz 125 250 500 1000 2000 4000 αs -0,01 0,02 0,06 0,20 0,32 0,48
ΔLw = 24 dB
≤ 2 kV
18
50 x 50 cm 4,5 m ² /box - 24 boxes/pallet
In progress
15

Liberate

Tufted 1/12" gauge loop
100% SDN Thrive® Matter (90% recycled content)
EcoFlex™ Statera (modified bitumen, 70% recycled content)
± 4500 g/m ²
± 700 g/m ²
± 489 g/m ²
± 7,3 mm
± 3,6 mm
± 0,136 g/cm ³
234.600/m ²
33 / LC2
A: intensive use
Bfl-s1
≤ 0,2%
≥ 7
≥ 4
≥ 4
0,075 m ² .K/W
0,15 αw
Hz 125 250 500 1000 2000 4000 αs 0,00 0,03 0,06 0,21 0,34 0,54
ΔLw = 25 dB
≤ 2 kV
18
50 x 50 cm 4,5 m ² /box - 24 boxes/pallet
In progress
15

Animate

Tufted 1/12" gauge loop
100% SDN Thrive® Matter (90% recycled content)
EcoFlex™ Statera (modified bitumen, 70% recycled content)
± 4500 g/m ²
± 700 g/m ²
± 433 g/m ²
± 7,2 mm
± 3,3 mm
± 0,132 g/cm ³
234.600/m ²
33 / LC2
A: intensive use
Bfl-s1
≤ 0,2%
≥ 7
≥ 4
≥ 4
0,068 m ² .K/W
0,15 αw
Hz 125 250 500 1000 2000 4000 αs 0,00 0,02 0,06 0,20 0,30 0,47
ΔLw = 24 dB
≤ 2 kV
18
50 x 50 cm 4,5 m ² /box - 24 boxes/pallet
In progress
15



Technical Specifications

Spécifications techniques - Technische specificaties - Technische Spezifikationen

		Grit
Construction Structure - Structuur - Konstruktion		1/12" Pattern Perfect®
Pile fibre composition Composition des fibres - Poolmateriaal - Material der Polnutschicht		ECONYL® 100% regenerated nylon
Secondary backing Envers - Rug - Beschichtung		EcoFlex™ Echo (94% recycled felt)
Total weight Poids total - Totaal gewicht - Gesamtgewicht		± 5001 g/m²
Pile weight Poids du velours - Poolgewicht - Poleinsatzgewicht		± 750 g/m²
Surface pile weight Poids du velours utile - Effectieve poolmassa - Polnutschichtgewicht		± 510 g/m²
Total thickness Epaisseur totale - Totale dikte - Gesamtdicke		± 8,6 mm
Surface pile thickness Hauteur du velours - Poolhoogte - Poldicke		± 3,2 mm
Surface pile density Densité du velours - Pooldichtheid - Polrohndichte		± 0,159 g/cm³
Number of tufts Nombre de boucles - Aantal noppen - Noppenzahl		± 132.080/ m²
Wear classification Classement d'usage - Gebruiksklasse - Beanspruchungsklasse	EN 1307	33 / LC2
Castor chair suitability Résistance aux chaises à roulettes - Rolstoelgeschiktheid - Stuhlrolleneignung	EN 985	A: intensive use
Fire classification Comportement au feu - Brandgedrag - Brandklasse	EN 13501-1	Bfl-s1
Dimensional stability Stabilité dimensionnelle - Dimensionale stabilität - Dimensionsstabilität	EN 986	≤ 0,2%
Colour fastness to light Solidité des couleurs à la lumière - Lichtbestendigheid van de kleuren - Lichtechtheit	EN ISO 105-B02	≥ 7
Rubbing fastness Solidité au frottement - Wrijftechtheid - Reibechtheit	EN ISO 105-X12	≥ 4
Colour fastness to water Solidité à l'eau - Waterechtheid - Wasserechtheit	EN ISO 105-E01	≥ 4
Thermal resistance Résistance thermique - Warmtedoorlaatweerstand - Wärmedurchlasswiderstand	ISO 8302	0,115 m².K/W
Sound absorption Absorption phonique - Geluidsabsorptie - Schallabsorptionsgrad	EN ISO 354	0,25 αw Hz 125 250 500 1000 2000 4000 αs 0,00 0,03 0,43 0,20 0,28 0,39
Impact sound reduction Réduction phonique aux bruits d'impacts - Reductie contactgeluid - Trittschallverbesserungsmaß	EN ISO 10140-3	ΔLw = 29 dB
Permanent antistatic Antistatique permanent - Permanent antistatisch - Permanent antistatisch	ISO 6356	≤ 2 kV
Number of colours Nombre de coloris - Aantal kleuren - Anzahl der Farben		12
Size & Packaging Dimensions & Emballage - Formaat en verpakking - Abmessungen & Verpackung		25 x 100 cm 4 m²/box - 24 boxes/pallet
GUT-Prodís Number Numéro GUT Prodís - Nummer GUT Prodís - GUT-Prodís Nummer		Ongoing
Warranty years Garantie ans - Garantie in jaren - Garantie Jahren		15

Bruut	Rupture	Basalt	Jute
1/12" Pattern Perfect®	1/12" Pattern Perfect®	Tufted 1/12" gauge loop	Tufted 1/12" gauge loop
ECONYL® 100% regenerated nylon	ECONYL® 100% regenerated nylon	100% solution dyed nylon	100% solution dyed nylon
EcoFlex™ Echo (94% recycled felt)	EcoFlex™ Echo (94% recycled felt)	EcoFlex™ Statera (modified bitumen, 70% recycled content)	EcoFlex™ Statera (modified bitumen, 70% recycled content)
± 5001 g/m²	± 5001 g/m²	± 4400 g/m²	± 4400 g/m²
± 780 g/m²	± 780 g/m²	± 600 g/m²	± 600 g/m²
± 498 g/m²	± 486 g/m²	± 390 g/m²	± 415 g/m²
± 8,7 mm	± 8,7 mm	± 6,4 mm	± 6,4 mm
± 3,3 mm	± 3,3 mm	± 3,1 mm	± 3,2 mm
± 0,151 g/cm³	± 0,147 g/cm³	± 0,125 g/cm³	± 0,127 g/cm³
± 132.080/ m²	± 132.080/ m²	224.400/m²	224.400/m²
33 / LC2	33 / LC2	33 / LC1	33 / LC2
A: intensive use	A: intensive use	A: intensive use	A: intensive use
Bfl-s1	Bfl-s1	Bfl-s1	Bfl-s1
≤ 0,2%	≤ 0,2%	≤ 0,2%	≤ 0,2%
≥ 7	≥ 7	≥ 7	≥ 7
≥ 4	≥ 4	≥ 4	≥ 4
≥ 4	≥ 4	≥ 4	≥ 4
0,120 m².K/W	0,114 m².K/W	0,066 m².K/w	0,069 m².K/W
0,30 αw Hz 125 250 500 1000 2000 4000 αs 0,00 0,03 0,33 0,25 0,36 0,55	0,30 αw Hz 125 250 500 1000 2000 4000 αs 0,01 0,03 0,37 0,24 0,35 0,55	0,15 αw Hz 125 250 500 1000 2000 4000 αw 0,02 0,03 0,08 0,16 0,29 0,33	0,15 αw Hz 125 250 500 1000 2000 4000 αw 0,02 0,02 0,07 0,16 0,29 0,33
ΔLw = 31 dB	ΔLw = 30 dB	ΔLw = 28 dB	ΔLw = 28 dB
≤ 2 kV	≤ 2 kV	≤ 2 kV	≤ 2 kV
12	12	12	12
25 x 100 cm 4 m²/box - 24 boxes/pallet	25 x 100 cm 4 m²/box - 24 boxes/pallet	50 x 50 cm 5 m²/box - 24 boxes/pallet	50 x 50 cm 5 m²/box - 24 boxes/pallet
Ongoing	Ongoing	65EB708B	94EFC68
15	15	15	15



Teak	Clay	Clay Create	Metallic Clay
Tufted 1/12" gauge loop	Tufted 1/12" gauge loop	Tufted 1/12" gauge loop	Tufted 1/12" gauge loop
100% solution dyed nylon	100% solution dyed nylon	100% solution dyed nylon	100% solution dyed nylon
EcoFlex™ Statera (modified bitumen, 70% recycled content)	EcoFlex™ Statera (modified bitumen, 70% recycled content)	EcoFlex™ Statera (modified bitumen, 70% recycled content)	EcoFlex™ Statera (modified bitumen, 70% recycled content)
± 4400 g/m ²	± 4495 g/m ²	± 4495 g/m ²	± 4495 g/m ²
± 600 g/m ²	± 600 g/m ²	± 600 g/m ²	± 600 g/m ²
± 370 g/m ²	± 384 g/m ²	± 384 g/m ²	± 384 g/m ²
± 6,4 mm	± 7,1 mm	± 7,1 mm	± 7,1 mm
± 2,9 mm	± 3,4 mm	± 3,4 mm	± 3,4 mm
± 0,127 g/cm ³	± 0,115 g/cm ³	± 0,115 g/cm ³	± 0,115 g/cm ³
224.400/m ²	205.000/ m ²	205.000/ m ²	205.000/m ²
33 / LC1	33 / LC1	33 / LC1	33 / LC1
A: intensive use	A: intensive use	A: intensive use	A: intensive use
Bfl-s1	Bfl-s1	Bfl-s1	Bfl-s1
≤ 0,2%	≤ 0,2%	≤ 0,2%	≤ 0,2%
≥ 7	≥ 7	≥ 7	≥ 7
≥ 4	≥ 4	≥ 4	≥ 4
≥ 4	≥ 4	≥ 4	≥ 4
0,065 m ² .K/W	0,076 m ² .K/W	0,076 m ² .K/W	0,076 m ² .K/W
0,15 aw	0,15 aw	0,15 aw	0,20 aw
Hz 125 250 500 1000 2000 4000 aw 0,01 0,03 0,07 0,16 0,29 0,33	Hz 125 250 500 1000 2000 4000 as 0,02 0,03 0,07 0,19 0,34 0,57	Hz 125 250 500 1000 2000 4000 as 0,02 0,03 0,07 0,19 0,34 0,57	Hz 125 250 500 1000 2000 4000 as 0,02 0,02 0,08 0,21 0,32 0,45
ΔLw = 28 dB	ΔLw = 28 dB	ΔLw = 28 dB	ΔLw = 26 dB
≤ 2 kV	≤ 2 kV	≤ 2 kV	≤ 2 kV
12	12	12	9
50 x 50 cm 5 m ² /box - 24 boxes/pallet	25 x 100 cm 5 m ² /box - 24 boxes/pallet	25 x 100 cm 5 m ² /box - 24 boxes/pallet	25 x 100 cm 5 m ² /box - 24 boxes/pallet
AB56D646	E4C2F79C	5E8698AB	9ADE6ED5
15	15	15	15

Photographic images are not representative due to variations in colour printing.
The representative samples shown are sectional definitions. For full design representation, please visit the website.





www.ivc-commercial.com

