

HIGH PERFORMANCE COLLECTIONS



itc



FUSION COLLECTION

MARBLE FUSION ⁸

ART FUSION ¹⁰

ESSENTIAL COLLECTION

E-WEAVE ¹⁴

E-BLITZ ¹⁶

E-FORCE ¹⁸

E-CHECK ²⁰

TERRA ²²

ROCK ²⁴

LONGPLAY COLLECTION

EVOLVE ²⁸

FORTESSE ³⁰

RE-TWEED ³²

CHAMBORD ³⁴

ALTONA ³⁶

REPOSE COLLECTION

NOCTURNE ⁴⁰

MIRAGE ⁴²

INTENSE ⁴⁴

PM BACH ⁴⁶

PM FLEUVE ⁴⁸

PM EROSE ⁵⁰

RD CASCADE ⁵²

GRAVURE COLLECTION

RV COLLAGE ⁵⁶

RV GLINT ⁵⁸

CUSTOM DESIGN ⁶⁰

Explore our range of high performance collections, previously known under the Arc Edition brand. Designed specifically for commercial spaces, this collection of broadloom carpets is built to endure the demands of high-traffic environments while maintaining a refined appearance.

Explore a versatile selection of textures, patterns, and colours that bring a perfect balance of durability and elegance to interiors. Each carpet in this range combines resilience with thoughtful design, offering an elevated flooring solution for spaces where performance truly matters.



FUSION COLLECTION



CRAFTED FOR CREATIVE SPACES

The Fusion Collection brings together artistry and materiality in a seamless balance of form and function. Inspired by the elegance of marble and the bold rhythm of geometric design, these carpets create interiors that feel both timeless and contemporary. With layered textures and a refined palette, Fusion invites architects and designers to shape spaces that inspire connection, creativity, and lasting impressions.

PRODUCTS

QUALITY	STRUCTURE	CLASSIFICATION	FIRE RESISTANCE
MARBLE FUSION	ituft 1/12" loop tipsheared	32 - LC2	C _{fl} -s1
ART FUSION	ituft 1/12" loop	32 - LC2	C _{fl} -s1

MARBLE FUSION

FUSION COLLECTION

BLENDED YARN | TACTILE LAYERING | MARBLE DESIGN | UNIQUE LARGE PATTERN



CONSTRUCTION
tuft 1/12" loop tipsheared



MATERIALS
100% PA 6
solution dyed



FIRE RESISTANCE
Cfl-s1

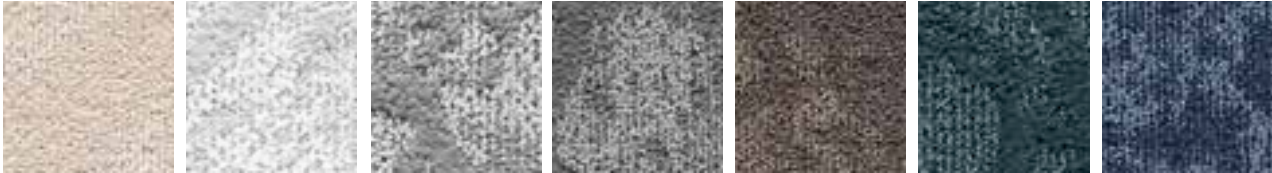


CLASSIFICATION
32 - LC2

SUGGESTED APPLICATION

Especially suited for conference rooms and hospitality

COLOURS



35 / SDN

90 / SDN

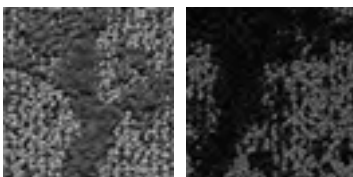
95 / SDN

96 / SDN

47 / SDN

27 / SDN

77 / SDN



97 / SDN

98 / SDN

PRODUCT FEATURES

CONSTRUCTION	ituft 1/12" loop tipsheared	PERMANENTLY ANTISTATIC ISO 6356	< 2 kV
PILE MATERIAL	100% PA 6 solution dyed	IMPACT NOISE RATING ISO 140-8	26 dB ΔLw
PRIMARY BACKING	Non woven PES	SOUND ABSORPTION ISO 354	0,25 aw
SECONDARY BACKING	Action back	THERMAL RESISTANCE ISO 8302	0,11 m ² K/W
PILE WEIGHT	± 800 gr/m ²	FASTNESS TO LIGHT ISO 105-B02	≥ 7
TOTAL WEIGHT	± 2.200 gr/m ²	COLOUR FASTNESS TO WATER ISO 105-E01	≥ 4-5
PILE HEIGHT	± 3,6-5,2 mm	RUBBING FASTNESS ISO 105-X12	≥ 4
TOTAL HEIGHT	± 7,7-9,3 mm	FIRE RESISTANCE EN 13501-1	Cfl-s1
TUFT DENSITY	± 282.000/m ²	WIDTH	± 400 cm
PILE DENSITY	± 0,122 g/cm ³	DOP N°	1011#IE0ACL
CLASSIFICATION	32 - LC2	PRODIS/GUT	2E4C701A
CASTOR CHAIR SUITABILITY EN 985	A: Intensive use		
STAIR SUITABILITY EN 1963	A: Intensive use		

ART FUSION

FUSION COLLECTION

BLENDED YARN | TACTILE LAYERING | GEOMETRIC DESIGN



CONSTRUCTION
ituft 1/12" loop



MATERIALS
100% PA 6
solution dyed



FIRE RESISTANCE
Cfl-s1



CLASSIFICATION
32 - LC2

SUGGESTED APPLICATION

Especially suited for hospitality and offices.

COLOURS



35 / SDN

90 / SDN

95 / SDN

96 / SDN

47 / SDN

27 / SDN

77 / SDN



97 / SDN

98 / SDN

PRODUCT FEATURES

CONSTRUCTION	ituft 1/12" loop
PILE MATERIAL	100% PA 6 solution dyed
PRIMARY BACKING	Non woven PES
SECONDARY BACKING	Twin back
PILE WEIGHT	± 780 gr/m ²
TOTAL WEIGHT	± 2.200 gr/m ²
PILE HEIGHT	± 4,2 mm
TOTAL HEIGHT	± 7,8 mm
TUFT DENSITY	± 282.000/m ²
PILE DENSITY	± 0,129 g/cm ³
CLASSIFICATION	32 - LC2
CASTOR CHAIR SUITABILITY EN 985	A: intensive use
STAIR SUITABILITY EN 1963	A: Intensive use

PERMANENTLY ANTISTATIC ISO 6356	< 2 kV
IMPACT NOISE RATING ISO 140-8	26 dB ΔLw
SOUND ABSORPTION ISO 354	0,25 aw
THERMAL RESISTANCE ISO 8302	0,10 m ² K/W
FASTNESS TO LIGHT ISO 105-B02	≥ 7
COLOUR FASTNESS TO WATER ISO 105-E01	≥ 4-5
RUBBING FASTNESS ISO 105-X12	≥ 4
FIRE RESISTANCE EN 13501-1	Cfl-s1
WIDTH	± 400 cm
DOP N°	1011#IE0ACL
PRODIS/GUT	F42F52E2

ESSENTIAL COLLECTION



THE FOUNDATION OF TIMELESS DESIGN

The Essential Collection celebrates simplicity and strength. With refined textures and earthy tones, these carpets provide a versatile base for contemporary spaces. Inspired by natural materials and minimal design, they embody quiet elegance, offering interiors a subtle yet powerful foundation that endures with style.

PRODUCTS

QUALITY	STRUCTURE	CLASSIFICATION	FIRE RESISTANCE
E-WEAVE	Tufting 5/64" minituft	33 - LC1	C _{fl} -s1
E-BLITZ	Tufting 1/10" loop pile	33 - LC1	B _{fl} -s1 if glued
E-FORCE	Tufting 1/10" cut pile	33 - LC5	C _{fl} -s1
E-CHECK	Tufting 1/10" loop pile	33 - LC1	C _{fl} -s1
TERRA	ituft 1/12" loop	32 - LC2	C _{fl} -s1 if glued
ROCK	ituft 1/12" loop	32 - LC3	C _{fl} -s1 if glued

E-WEAVE

ESSENTIAL COLLECTION

RESPONSIBLY CRAFTED | MINIMALIST POWER | SOFT NEUTRALS | SCANDINAVIAN DESIGN



CONSTRUCTION
Tufting 5/64" minituft



MATERIALS
100% PA 6
solution dyed



FIRE RESISTANCE
Cfl-s1

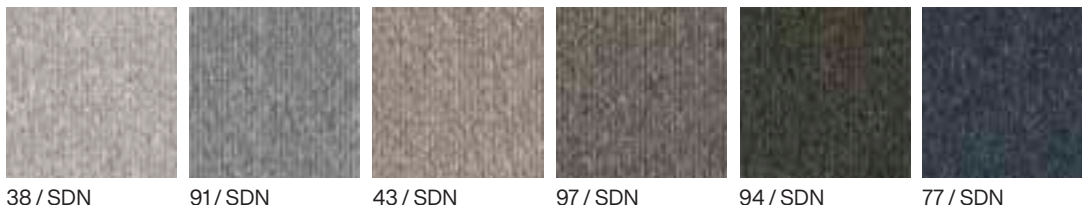


CLASSIFICATION
32 - LC1

SUGGESTED APPLICATION

Especially suited for offices and public spaces.

COLOURS



PRODUCT FEATURES

CONSTRUCTION	Tufting 5/64° minituft	PERMANENTLY ANTISTATIC ISO 6356	< 2 kV
PILE MATERIAL	100% PA 6 solution dyed 75% recycled content	IMPACT NOISE RATING ISO 140-8	18 dB ΔLw
PRIMARY BACKING	Non woven PES	SOUND ABSORPTION ISO 354	0,15 αw
SECONDARY BACKING	Action back	THERMAL RESISTANCE ISO 8302	0,05 m ² K/W
PILE WEIGHT	± 500 gr/m ²	FASTNESS TO LIGHT ISO 105-B02	≥ 7
TOTAL WEIGHT	± 2.250 gr/m ²	COLOUR FASTNESS TO WATER ISO 105-E01	≥ 4-5
PILE HEIGHT	± 1,0 mm	RUBBING FASTNESS ISO 105-X12	≥ 4
TOTAL HEIGHT	± 5,0 mm	FIRE RESISTANCE EN 13501-1	Cfl-s1
TUFT DENSITY	200.000/m ²	WIDTH	± 400 cm
PILE DENSITY	0,160 g/cm ³	DOP N°	1011#IE0ACV
CLASSIFICATION	33 - LC1	PRODIS/GUT	7E146FDC
CASTOR CHAIR SUITABILITY EN 985	A: Intensive use		
STAIR SUITABILITY EN 1963	A: Intensive use		

E-BLITZ

ESSENTIAL COLLECTION

ALL-PURPOSE | GENTLE COLOR BLEND | STRENGTH & DURABILITY



CONSTRUCTION
Tufting 1/10" loop pile



MATERIALS
100% PA 6
solution dyed



FIRE RESISTANCE
Bfl-s1 if glued

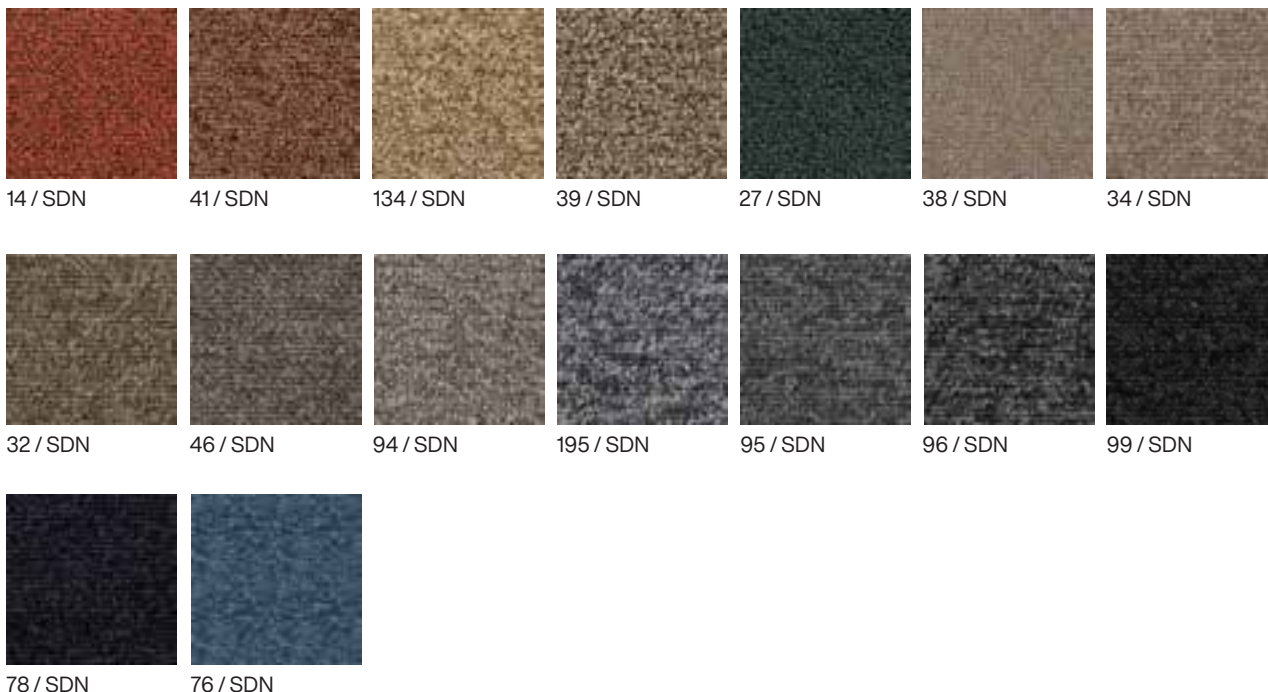


CLASSIFICATION
33 - LC1

SUGGESTED APPLICATION

Especially suited for offices, public spaces and hotel corridors.

COLOURS



PRODUCT FEATURES

CONSTRUCTION	Tufting 1/10" loop pile	PERMANENTLY ANTISTATIC ISO 6356	< 2 kV
PILE MATERIAL	100% PA 6 solution dyed	IMPACT NOISE RATING ISO 140-8	25 dB ΔLw
PRIMARY BACKING	Non woven PES	SOUND ABSORPTION ISO 354	0,15 aw
SECONDARY BACKING	Action back	THERMAL RESISTANCE ISO 8302	0.07 m ² K/W
PILE WEIGHT	± 540 gr/m ²	FASTNESS TO LIGHT ISO 105-B02	≥ 7
TOTAL WEIGHT	± 1.800 gr/m ²	COLOUR FASTNESS TO WATER ISO 105-E01	≥ 4-5
PILE HEIGHT	± 2,9 mm	RUBBING FASTNESS ISO 105-X12	≥ 4
TOTAL HEIGHT	± 5,4 mm	FIRE RESISTANCE EN 13501-1	Bfl-s1 if glued
TUFT DENSITY	± 180.000/m ²	WIDTH	± 400 cm
PILE DENSITY	± 0,117 g/cm ³	DOP N°	1011#IE0ABV
CLASSIFICATION	33 - LC1	PRODIS/GUT	D00EC6DF
CASTOR CHAIR SUITABILITY EN 985	A: Intensive use		
STAIR SUITABILITY EN 1963	A: Intensive use		

E-FORCE

ESSENTIAL COLLECTION

TIMELESS LOOK | SOFT DUAL-TONE



CONSTRUCTION
Tufting 1/10" cut pile



MATERIALS
100% PA 6
solution dyed



FIRE RESISTANCE
Cfl-s1



CLASSIFICATION
33 - LC5

SUGGESTED APPLICATION

Especially suited for hospitality and offices.

COLOURS



33 / SDN

65 / SDN

43 / SDN

42 / SDN

49 / SDN

96 / SDN

193 / SDN



38 / SDN

93 / SDN

95 / SDN

99 / SDN

PRODUCT FEATURES

CONSTRUCTION	Tufting 1/10" cut pile	PERMANENTLY ANTISTATIC ISO 6356	< 2 kV
PILE MATERIAL	100% PA 6 solution dyed	IMPACT NOISE RATING ISO 140-8	28 dB ΔLw
PRIMARY BACKING	Non woven PES	SOUND ABSORPTION ISO 354	0,20 aw
SECONDARY BACKING	Action back	THERMAL RESISTANCE ISO 8302	0,11 m ² K/W
PILE WEIGHT	± 1.270 gr/m ²	FASTNESS TO LIGHT ISO 105-B02	≥ 7
TOTAL WEIGHT	± 2.200 gr/m ²	COLOUR FASTNESS TO WATER ISO 105-E01	≥ 4-5
PILE HEIGHT	± 6,3 mm	RUBBING FASTNESS ISO 105-X12	≥ 4
TOTAL HEIGHT	± 9,0 mm	FIRE RESISTANCE EN 13501-1	Cfl-s1
TUFT DENSITY	± 182.000/m ²	WIDTH	± 400 cm
PILE DENSITY	± 0,167 g/cm ³	DOP N°	1011#IE0ACL
CLASSIFICATION	33 - LC5	PRODIS/GUT	ACBFA2D5
CASTOR CHAIR SUITABILITY EN 985	A: Intensive use		
STAIR SUITABILITY EN 1963	A: Intensive use		

E-CHECK

ESSENTIAL COLLECTION

TRADITIONAL PATTERN | CONTEMPORARY TWIST | EARTH-TONED



CONSTRUCTION
Tufting 1/10" loop pile



MATERIALS
100% PA 6
solution dyed



FIRE RESISTANCE
Cfl-s1

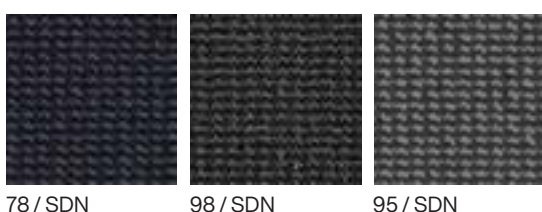
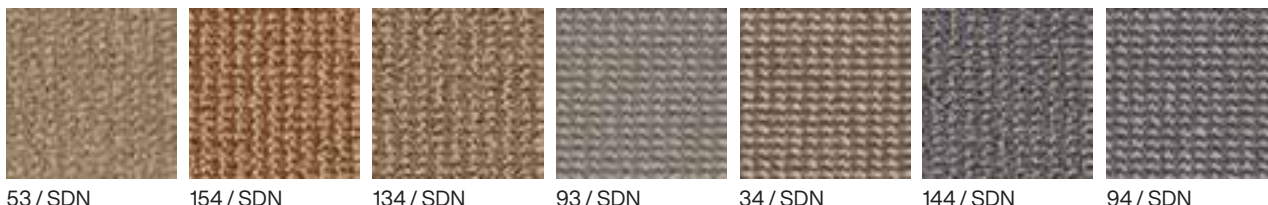


CLASSIFICATION
33 - LC1

SUGGESTED APPLICATION

Especially suited for offices and public spaces.

COLOURS



PRODUCT FEATURES

CONSTRUCTION	Tufting 1/10" loop pile
PILE MATERIAL	100% PA 6 solution dyed
PRIMARY BACKING	± 625 gr/m ²
SECONDARY BACKING	± 1.850 gr/m ²
PILE WEIGHT	± 3,0 mm
TOTAL WEIGHT	± 6,0 mm
PILE HEIGHT	± 222.000/m ²
TOTAL HEIGHT	± 0,123 g/cm ³
TUFT DENSITY	33 - LC1
PILE DENSITY	A: Intensive use
CLASSIFICATION	33 - LC1
CASTOR CHAIR SUITABILITY EN 985	A: Intensive use
STAIR SUITABILITY EN 1963	A: Intensive use

PERMANENTLY ANTISTATIC ISO 6356	< 2 kV
IMPACT NOISE RATING ISO 140-8	24 dB ΔLw
SOUND ABSORPTION ISO 354	0,20 αw
THERMAL RESISTANCE ISO 8302	0.07 m ² K/W
FASTNESS TO LIGHT ISO 105-B02	≥ 7
COLOUR FASTNESS TO WATER ISO 105-E01	≥ 4-5
RUBBING FASTNESS ISO 105-X12	≥ 4
FIRE RESISTANCE EN 13501-1	Cfl-s1
WIDTH	± 400 cm
DOP N°	1011#IEOACL
PRODIS/GUT	2B5F6C88

TERRA

ESSENTIAL COLLECTION

RAW & NATURAL | EARTH INSPIRED COLORS



CONSTRUCTION
ituft 1/12" loop



MATERIALS
100% PA 6
solution dyed



FIRE RESISTANCE
Cfl-s1 if glued

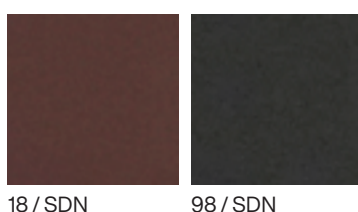


CLASSIFICATION
32 - LC2

SUGGESTED APPLICATION

Especially suited for conference rooms, hospitality and offices.

COLOURS



PRODUCT FEATURES

CONSTRUCTION	ituft 1/12" loop
PILE MATERIAL	100% PA 6 solution dyed
PRIMARY BACKING	Non woven PES
SECONDARY BACKING	Action back
PILE WEIGHT	± 840 gr/m ²
TOTAL WEIGHT	± 2.300 gr/m ²
PILE HEIGHT	± 4,4 mm
TOTAL HEIGHT	± 7,5 mm
TUFT DENSITY	259.000/m ²
PILE DENSITY	0,129 g/cm ³
CLASSIFICATION	32 - LC2
CASTOR CHAIR SUITABILITY EN 985	A: Intensive use
STAIR SUITABILITY EN 1963	A: Intensive use

PERMANENTLY ANTISTATIC ISO 6356	< 2 kV
IMPACT NOISE RATING ISO 140-8	25 dB ΔLw
SOUND ABSORPTION ISO 354	0,20 αw
THERMAL RESISTANCE ISO 8302	0,10 m ² K/W
FASTNESS TO LIGHT ISO 105-B02	≥ 7
COLOUR FASTNESS TO WATER ISO 105-E01	≥ 4-5
RUBBING FASTNESS ISO 105-X12	≥ 4
FIRE RESISTANCE EN 13501-1	Cfl-s1 if glued
WIDTH	± 400 cm
DOP N°	1011#IE0ACV
PRODIS/GUT	19DAA0F3

ROCK

ESSENTIAL COLLECTION

NATURE INFUSED | WARM GROUNDED SHADES



CONSTRUCTION
tuft 1/12" loop



MATERIALS
100% PA 6
solution dyed



FIRE RESISTANCE
Cfl-s1 if glued

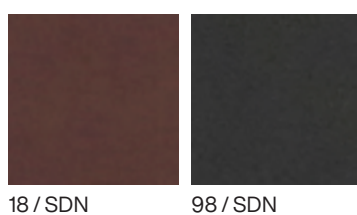


CLASSIFICATION
32 - LC3

SUGGESTED APPLICATION

Especially suited for conference rooms and offices.

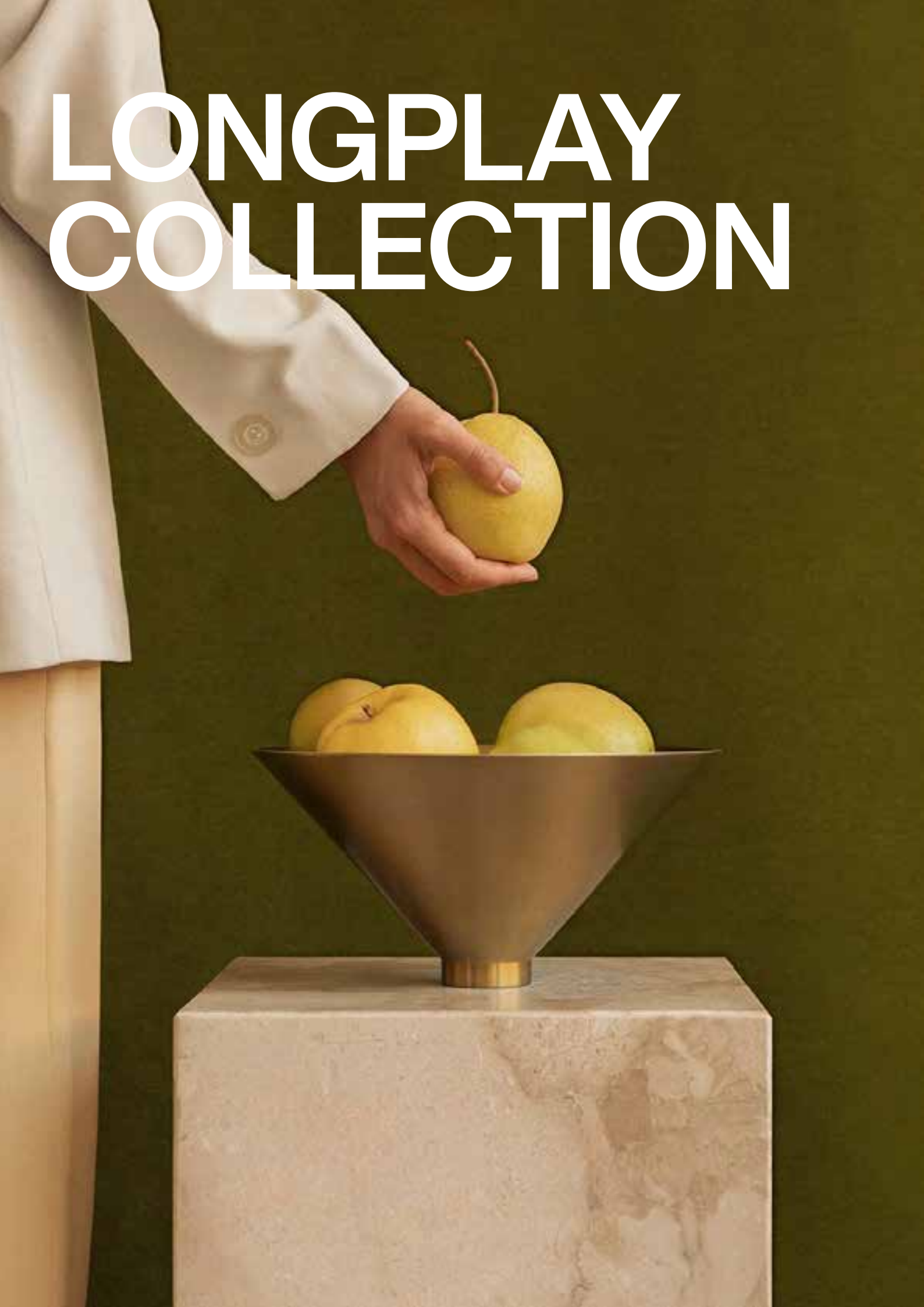
COLOURS



PRODUCT FEATURES

CONSTRUCTION	ituft 1/12" loop	PERMANENTLY ANTISTATIC ISO 6356	< 2 kV
PILE MATERIAL	100% PA 6 solution dyed	IMPACT NOISE RATING ISO 140-8	27 dB ΔLw
PRIMARY BACKING	Non woven PES	SOUND ABSORPTION ISO 354	0,20 αw
SECONDARY BACKING	Action back	THERMAL RESISTANCE ISO 8302	0,10 m ² K/W
PILE WEIGHT	± 950 gr/m ²	FASTNESS TO LIGHT ISO 105-B02	≥ 7
TOTAL WEIGHT	± 2.450 gr/m ²	COLOUR FASTNESS TO WATER ISO 105-E01	≥ 4-5
PILE HEIGHT	± 5,0 mm	RUBBING FASTNESS ISO 105-X12	≥ 4
TOTAL HEIGHT	± 7,8 mm	FIRE RESISTANCE EN 13501-1	Cfl-s1 if glued
TUFT DENSITY	259.000/m ²	WIDTH	± 400 cm
PILE DENSITY	0,140 g/cm ³	DOP N°	1011#IE0ACV
CLASSIFICATION	32 - LC3	PRODIS/GUT	9EE11CD3
CASTOR CHAIR SUITABILITY EN 985	A: Intensive use		
STAIR SUITABILITY EN 1963	A: Intensive use		

LONGPLAY COLLECTION



DESIGNED FOR ENDURING COMFORT

The Longplay Collection is crafted for spaces that demand both elegance and longevity. Combining velvety textures, soft dual-tones, and timeless patterns, these carpets are made to last—bringing comfort, character, and sophistication to every step. A collection that harmonises tradition with contemporary appeal.

PRODUCTS

QUALITY	STRUCTURE	CLASSIFICATION	FIRE RESISTANCE
EVOLVE	Tufting 5/64" cut pile	32 - LC4	C _{fl} -s1 if glued
FORTESSE	Tufting 1/10" cut pile	32 - LC2	C _{fl} -s1 if glued
RE-TWEED	Tufting 1/10" loop pile	33 - LC1	C _{fl} -s1 if glued
CHAMBORD	Tufting 5/64" cut pile	32 - LC2	C _{fl} -s1 if glued
ALTONA	Tufting 5/64" cut pile	32 - LC2	C _{fl} -s1 if glued

EVOLVE

LONGPLAY COLLECTION

COLOR DIVERSITY | SOFT DUAL-TONE



CONSTRUCTION
Tufting 5/64" cut pile



MATERIALS
100% PA 6



FIRE RESISTANCE
Cfl-s1 if glued

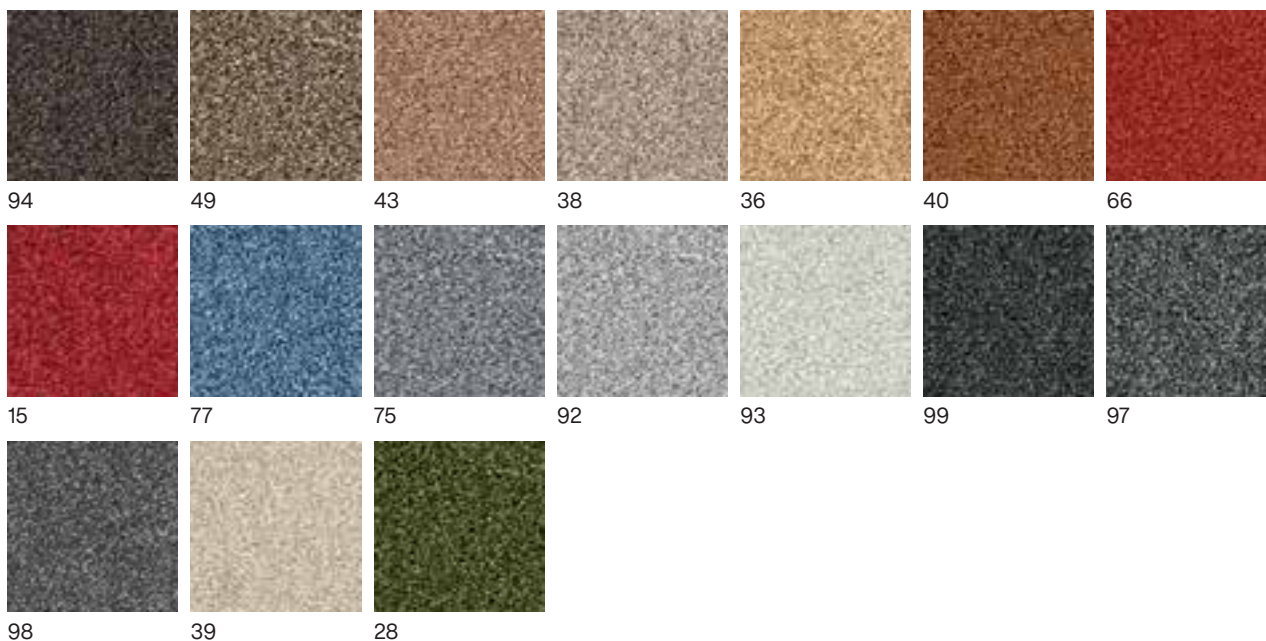


CLASSIFICATION
32 - LC4

SUGGESTED APPLICATION

Especially suited for hospitality and offices.

COLOURS



PRODUCT FEATURES

CONSTRUCTION	Tufting 5/64" cut pile	PERMANENTLY ANTISTATIC ISO 6356	< 2 kV
PILE MATERIAL	100% PA 6	IMPACT NOISE RATING ISO 140-8	26 dB ΔLw
PRIMARY BACKING	Woven PP	SOUND ABSORPTION ISO 354	0,15 aw
SECONDARY BACKING	Action back	THERMAL RESISTANCE ISO 8302	0,08 m ² K/W
PILE WEIGHT	± 1.200 gr/m ²	FASTNESS TO LIGHT ISO 105-B02	> 5-6
TOTAL WEIGHT	± 2.027 gr/m ²	COLOUR FASTNESS TO WATER ISO 105-E01	≥ 4-5
PILE HEIGHT	± 5,0 mm	RUBBING FASTNESS ISO 105-X12	≥ 4
TOTAL HEIGHT	± 7,5 mm	FIRE RESISTANCE EN 13501-1	Cfl-s1
TUFT DENSITY	± 278.400/m ²	WIDTH	± 400 cm
PILE DENSITY	± 0,180g/cm ³	DOP N°	1011#IE0ACV
CLASSIFICATION	32 - LC4	PRODIS/GUT	AFBF95B0
CASTOR CHAIR SUITABILITY EN 985	A: Intensive use		
STAIR SUITABILITY EN 1963	A: Intensive use		

FORTESSE

LONGPLAY COLLECTION

EVERGREEN DESIGN | CLASSICAL COLORS



CONSTRUCTION
Tufting 1/10" cut pile



MATERIALS
100% PA 6



FIRE RESISTANCE
Cfl-s1 if glued

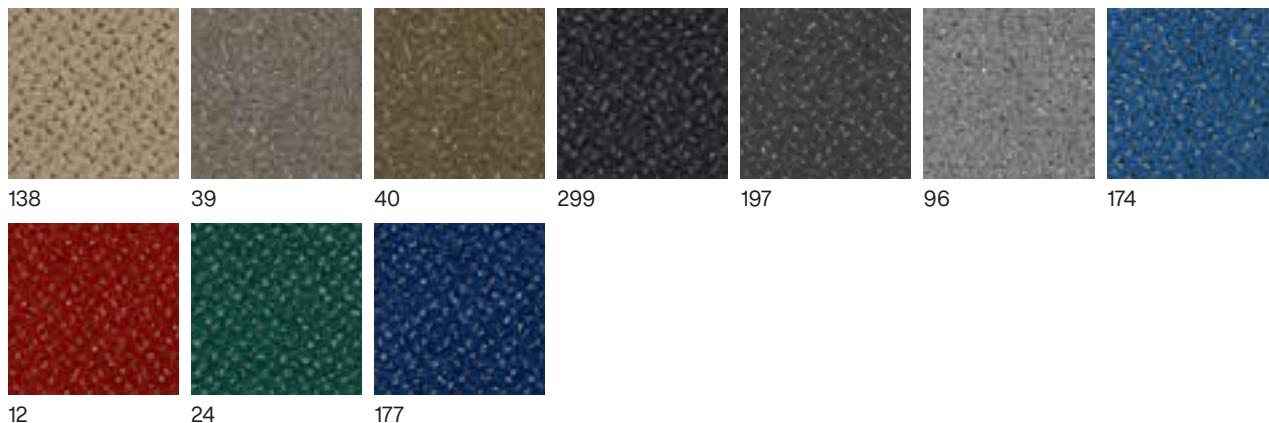


CLASSIFICATION
32 - LC2

SUGGESTED APPLICATION

Especially suited for offices.

COLOURS



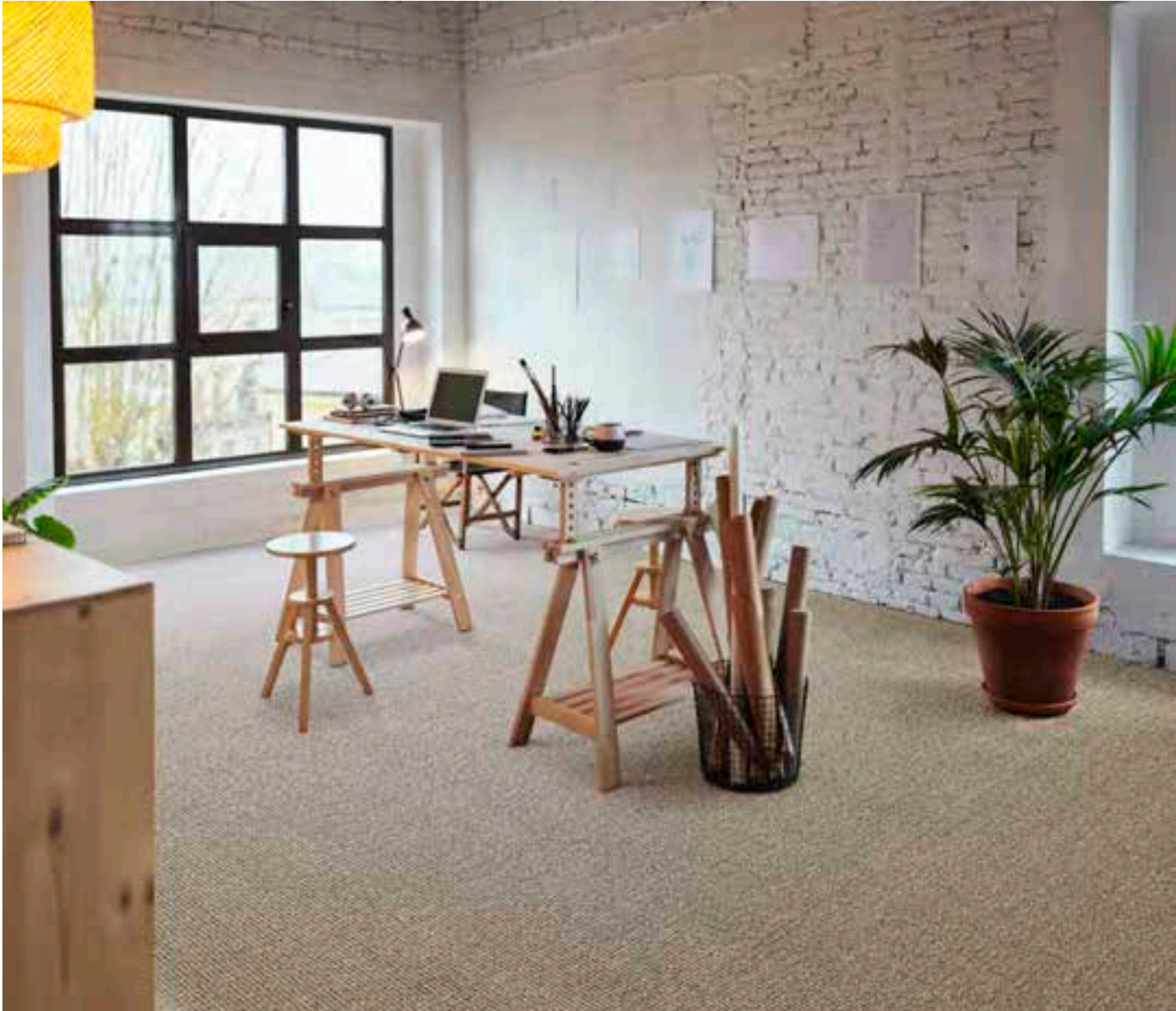
PRODUCT FEATURES

CONSTRUCTION	Tufting 1/10" cut pile	PERMANENTLY ANTISTATIC ISO 6356	< 2 kV
PILE MATERIAL	100% PA 6	IMPACT NOISE RATING ISO 140-8	25 dB ΔLw
PRIMARY BACKING	Woven PP	SOUND ABSORPTION ISO 354	0,15 aw
SECONDARY BACKING	Action back	THERMAL RESISTANCE ISO 8302	0,07 m ² K/W
PILE WEIGHT	± 730 gr/m ²	FASTNESS TO LIGHT ISO 105-B02	≥ 5-6
TOTAL WEIGHT	± 1.650 gr/m ²	COLOUR FASTNESS TO WATER ISO 105-E01	≥ 4-5
PILE HEIGHT	± 4,0 mm	RUBBING FASTNESS ISO 105-X12	≥ 4
TOTAL HEIGHT	± 6,5 mm	FIRE RESISTANCE EN 13501-1	Cfl-s1 if glued
TUFT DENSITY	± 225.000/m ²	WIDTH	± 400 cm
PILE DENSITY	0,113 g/cm ³	DOP N°	1011#IE0ACV
CLASSIFICATION	32 - LC2	PRODIS/GUT	4F6BE834
CASTOR CHAIR SUITABILITY EN 985	A: Intensive use		
STAIR SUITABILITY EN 1963	A: Intensive use		

RE-TWEED

LONGPLAY COLLECTION

TWEED PATTERN | EARTH-TONED



CONSTRUCTION
Tufting 1/10" loop pile



MATERIALS
85% PA 6
15% PP



FIRE RESISTANCE
Cfl-s1 if glued

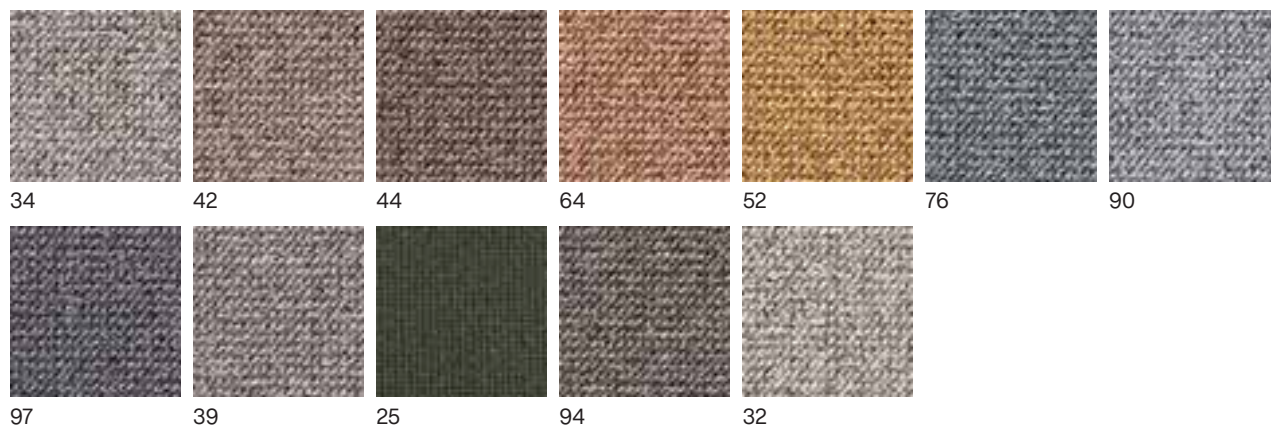


CLASSIFICATION
33 - LC1

SUGGESTED APPLICATION

Especially suited for offices.

COLOURS



PRODUCT FEATURES

CONSTRUCTION	Tufting 1/10" loop pile	PERMANENTLY ANTISTATIC ISO 6356	< 2 kV
PILE MATERIAL	85% PA, 15% PP	IMPACT NOISE RATING ISO 140-8	23 dB ΔLw
PRIMARY BACKING	Non woven PES	SOUND ABSORPTION ISO 354	0,15 aw
SECONDARY BACKING	Action back	THERMAL RESISTANCE ISO 8302	0,06 m ² K/W
PILE WEIGHT	± 525 gr/m ²	FASTNESS TO LIGHT ISO 105-B02	≥ 5
TOTAL WEIGHT	± 1.800 gr/m ²	COLOUR FASTNESS TO WATER ISO 105-E01	≥ 4-5
PILE HEIGHT	± 2,6 mm	RUBBING FASTNESS ISO 105-X12	≥ 4
TOTAL HEIGHT	± 5,2 mm	FIRE RESISTANCE EN 13501-1	Cfl-s1 if glued
TUFT DENSITY	± 245.000/m ²	WIDTH	± 400 cm
PILE DENSITY	± 0,119 g/cm ³	DOP N°	1011#IEA0CV
CLASSIFICATION	33 - LC1	PRODIS/GUT	FFEDDCC3
CASTOR CHAIR SUITABILITY EN 985	A: Intensive use		
STAIR SUITABILITY EN 1963	A: Intensive use		

CHAMBORD

LONGPLAY COLLECTION

TIMELESS DESIGN | TRADITIONAL PALETTE | VELVETY ELEGANCE



CONSTRUCTION
Tufting 5/64" cut pile



MATERIALS
100% PA 6



FIRE RESISTANCE
Cfl-s1 if glued

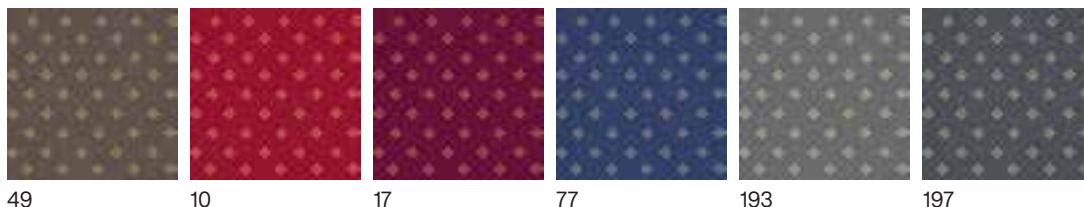


CLASSIFICATION
32 - LC2

SUGGESTED APPLICATION

Especially suited for hospitality.

COLOURS



PRODUCT FEATURES

CONSTRUCTION	Tufting 5/64" cut pile	PERMANENTLY ANTISTATIC ISO 6356	< 2 kV
PILE MATERIAL	100% PA 6	IMPACT NOISE RATING ISO 140-8	24 dB ΔLw
PRIMARY BACKING	Non woven PES	SOUND ABSORPTION ISO 354	0,20 aw
SECONDARY BACKING	Action back	THERMAL RESISTANCE ISO 8302	0,07 m ² K/W
PILE WEIGHT	± 630 gr/m ²	FASTNESS TO LIGHT ISO 105-B02	≥ 5-6
TOTAL WEIGHT	± 1600 gr/m ²	COLOUR FASTNESS TO WATER ISO 105-E01	≥ 4-5
PILE HEIGHT	± 4,1 mm	RUBBING FASTNESS ISO 105-X12	≥ 4
TOTAL HEIGHT	± 6,5 mm	FIRE RESISTANCE EN 13501-1	Cfl-s1 if glued
TUFT DENSITY	± 378.000/m ²	WIDTH	± 400 cm
PILE DENSITY	± 0,107 g/cm ³	DOP N°	1011#IE0ACV
CLASSIFICATION	32 - LC2	PRODIS/GUT	A05F03BE
CASTOR CHAIR SUITABILITY EN 985	A: Intensive use		
STAIR SUITABILITY EN 1963	A: Intensive use		

ALTONA

LONGPLAY COLLECTION

LONG LASTING COMFORT | DYNAMIC COLOR RANGE | VELVETY ELEGANCE



CONSTRUCTION
Tufting 5/64" cut pile



MATERIALS
100% PA 6



FIRE RESISTANCE
Cfl-s1 if glued

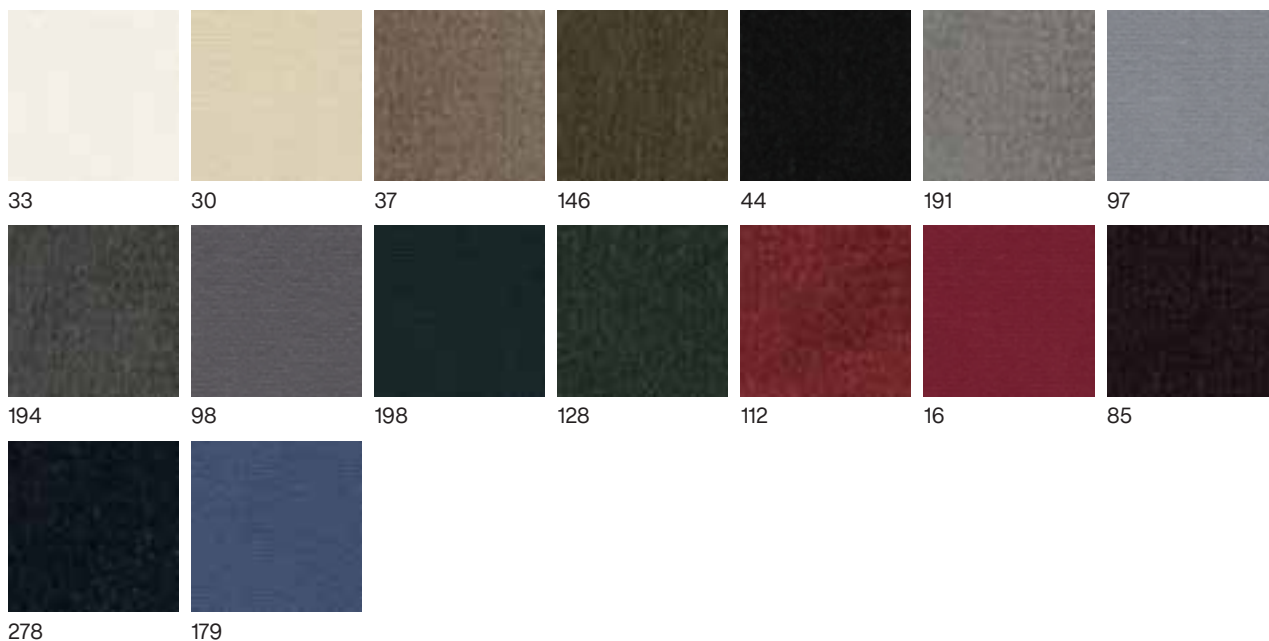


CLASSIFICATION
32 - LC2

SUGGESTED APPLICATION

Especially suited for hospitality, expo's and sport facilities.

COLOURS



PRODUCT FEATURES

CONSTRUCTION	Tufting 5/64" cut pile
PILE MATERIAL	100% PA 6
PRIMARY BACKING	Woven PP
SECONDARY BACKING	Ecoluxe back
PILE WEIGHT	± 620 gr/m ²
TOTAL WEIGHT	± 1.570 gr/m ²
PILE HEIGHT	± 4,5 mm
TOTAL HEIGHT	± 8,0 mm
TUFT DENSITY	± 400.000/m ²
PILE DENSITY	± 0,100 g/cm ³
CLASSIFICATION	32 - LC2
CASTOR CHAIR SUITABILITY EN 985	A: Intensive use
STAIR SUITABILITY EN 1963	B: occasional use

PERMANENTLY ANTISTATIC ISO 6356	< 2 kV
IMPACT NOISE RATING ISO 140-8	28 dB ΔLw
SOUND ABSORPTION ISO 354	0,30 aw
THERMAL RESISTANCE ISO 8302	0,13 m ² K/W
FASTNESS TO LIGHT ISO 105-B02	≥ 5-6
COLOUR FASTNESS TO WATER ISO 105-E01	≥ 4-5
RUBBING FASTNESS ISO 105-X12	≥ 4
FIRE RESISTANCE EN 13501-1	Cfl-s1 if glued
WIDTH	± 400 cm
DOP N°	1011#IF0ACV
PRODIS/GUT	DBC040FB

REPOSE COLLECTION



SERENITY IN EVERY DETAIL

The Repose Collection brings calm and refinement to high-performance flooring. From neutral hues to rich colour diversity, these carpets balance strength with softness. Their comforting textures and graceful designs evoke a sense of ease, creating interiors that welcome rest, inspiration, and quiet luxury.

PRODUCTS

QUALITY	STRUCTURE	CLASSIFICATION	FIRE RESISTANCE
NOCTURNE	Tufting 5/64" cut pile	32 - LC4	C _{fl} -s1 if glued
MIRAGE	Tufting 5/64" cut pile	33 - LC4	C _{fl} -s1 if glued
INTENSE	Tufting 1/10" cut pile	23/32 - LC5	C _{fl} -s1 if glued
PM BACH	Tufting 1/10" cut pile	32 - LC2	B _{fl} -s1 if glued
PM FLEUVE	Tufting 1/10" cut pile	32 - LC2	B _{fl} -s1 if glued
PM EROSE	Tufting 1/10" cut pile	32 - LC2	B _{fl} -s1 if glued
RD CASCADE	Tufting 1/10" cut pile	32 - LC4	C _{fl} -s1

NOCTURNE

REPOSE COLLECTION

SOPHISTICATEDLY STRONG | NEUTRAL COLORS



CONSTRUCTION
Tufting 5/64" cut pile



MATERIALS
100% PA 6



FIRE RESISTANCE
Cfl-s1 if glued

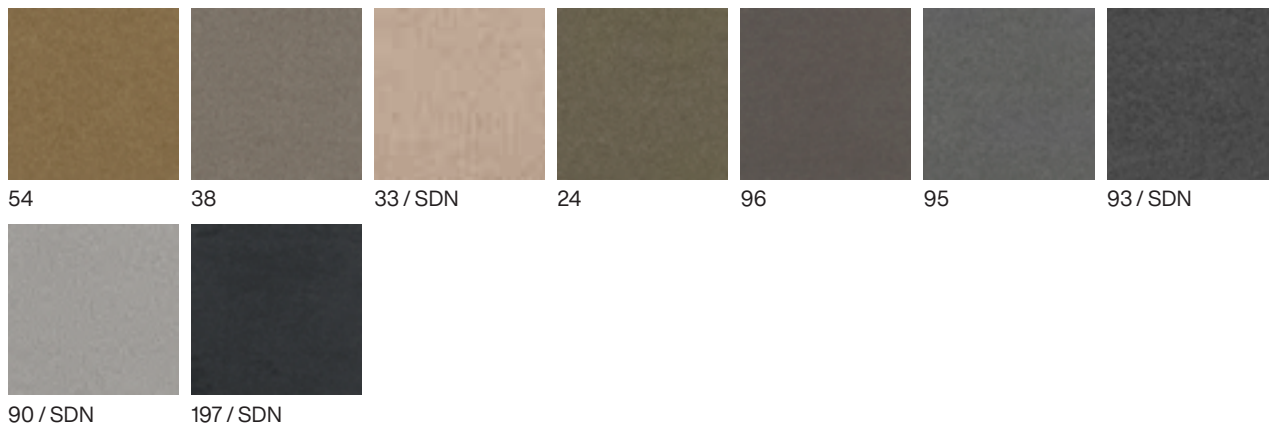


CLASSIFICATION
32 - LC4

SUGGESTED APPLICATION

Especially suited for hospitality.

COLOURS



PRODUCT FEATURES

CONSTRUCTION	Tufting 5/64" cut pile	PERMANENTLY ANTISTATIC ISO 6356	< 2 kV
PILE MATERIAL	100% PA 6	IMPACT NOISE RATING ISO 140-8	27 dB ΔLw
PRIMARY BACKING	Non woven PES	SOUND ABSORPTION ISO 354	0,20 aw
SECONDARY BACKING	Action back	THERMAL RESISTANCE ISO 8302	0,091 m ² K/W
PILE WEIGHT	± 1.160 gr/m ²	FASTNESS TO LIGHT ISO 105-B02	≥ 7 (33-90-93-197) ≥ 5 (24-38-54-95-96)
TOTAL WEIGHT	± 2.200 gr/m ²	COLOUR FASTNESS TO WATER ISO 105-E01	≥ 4-5
PILE HEIGHT	± 5,6 mm	RUBBING FASTNESS ISO 105-X12	≥ 4
TOTAL HEIGHT	± 7,7 mm	FIRE RESISTANCE EN 13501-1	Cfl-s1 if glued
TUFT DENSITY	± 297.000/m ²	WIDTH	± 400 cm
PILE DENSITY	± 0,172 g/cm ³	DOP N°	1011#IE0ACV
CLASSIFICATION	32 - LC4	PRODIS/GUT	7EE03BBB
CASTOR CHAIR SUITABILITY EN 985	A: Intensive use		
STAIR SUITABILITY EN 1963	A: Intensive use		

MIRAGE

REPOSE COLLECTION

INTENSE COLOR DIVERSITY | REFINED SOLIDNESS



CONSTRUCTION
Tufting 5/64" cut pile



MATERIALS
100% PA 6



FIRE RESISTANCE
Cfl-s1 if glued



CLASSIFICATION
33 - LC4

SUGGESTED APPLICATION

Especially suited for hospitality and public spaces.

COLOURS



PRODUCT FEATURES

CONSTRUCTION	Tufting 5/64" cut pile	PERMANENTLY ANTISTATIC ISO 6356	< 2 kV
PILE MATERIAL	100% PA 6	IMPACT NOISE RATING ISO 140-8	29 dB ΔLw
PRIMARY BACKING	Non woven PES	SOUND ABSORPTION ISO 354	0,20 aw
SECONDARY BACKING	Action back	THERMAL RESISTANCE ISO 8302	0,097 m ² K/W
PILE WEIGHT	± 1.100 gr/m ²	FASTNESS TO LIGHT ISO 105-B02	≥ 7 (15-31-33-35-39-47-48- 77- 90-92 -97-99) ≥ 5 (25-27-61-62-66-72- 86-95)
TOTAL WEIGHT	± 2.200 gr/m ²	COLOUR FASTNESS TO WATER ISO 105-E01	≥ 4-5
PILE HEIGHT	± 6,0 mm	RUBBING FASTNESS ISO 105-X12	≥ 4
TOTAL HEIGHT	± 8,0 mm	FIRE RESISTANCE EN 13501-1	Cfl-s1 if glued
TUFT DENSITY	± 267.000/m ²	WIDTH	± 400 cm
PILE DENSITY	± 0,152 g/cm ³	DOP N°	1011#IE0ACV
CLASSIFICATION	33 - LC4	PRODIS/GUT	5FA2542E
CASTOR CHAIR SUITABILITY EN 985	A: Intensive use		
STAIR SUITABILITY EN 1963	A: intensive use		

INTENSE REPOSE COLLECTION

COMFORTING TEXTURE | TENDER TO THE TOUCH | MOST LUXURIOUS SOFTNESS



CONSTRUCTION
Tufting 1/10" cut pile



MATERIALS
100% PA 6



FIRE RESISTANCE
Cfl-s1 if glued



CLASSIFICATION
23/32 - LC5

SUGGESTED APPLICATION

Especially suited for luxury hotel rooms.

COLOURS



PRODUCT FEATURES

CONSTRUCTION	Tufting 1/10" cut pile	PERMANENTLY ANTISTATIC ISO 6356	< 2 kV
PILE MATERIAL	100% PA 6	IMPACT NOISE RATING ISO 140-8	32 dB ΔLw
PRIMARY BACKING	Woven PP	SOUND ABSORPTION ISO 354	0,30 aw
SECONDARY BACKING	Twin back	THERMAL RESISTANCE ISO 8302	0,22 m ² K/W
PILE WEIGHT	± 1.800 gr/m ²	FASTNESS TO LIGHT ISO 105-B02	≥ 5-6
TOTAL WEIGHT	± 2.600 gr/m ²	COLOUR FASTNESS TO WATER ISO 105-E01	≥ 4-5
PILE HEIGHT	± 9,5 mm	RUBBING FASTNESS ISO 105-X12	≥ 4
TOTAL HEIGHT	± 12,0 mm	FIRE RESISTANCE EN 13501-1	Cfl-s1 if glued
TUFT DENSITY	± 240.000/m ²	WIDTH	± 400 cm
PILE DENSITY	± 0,168 g/cm ³	DOP N*	1011#IE0ACV
CLASSIFICATION	23/32 - LC5	PRODIS/GUT	30AE22D2
CASTOR CHAIR SUITABILITY EN 985	B: occasional use		
STAIR SUITABILITY EN 1963	B: occasional use		

PM BACH

REPOSE COLLECTION

ELEGANT CLASSIC | HERITAGE COLORS



CONSTRUCTION
Tufting 1/10" cut pile



MATERIALS
100% PA 6



FIRE RESISTANCE
Bfl-s1 if glued

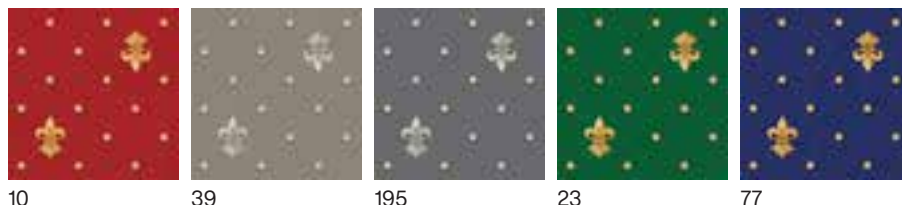


CLASSIFICATION
32 - LC2

SUGGESTED APPLICATION

Especially suited for hospitality and restaurants.

COLOURS



PRODUCT FEATURES

CONSTRUCTION	Tufting 1/10" cut pile	PERMANENTLY ANTISTATIC ISO 6356	< 2 kV
PILE MATERIAL	100% PA 6	IMPACT NOISE RATING ISO 140-8	24 dB ΔLw
PRIMARY BACKING	Non woven PES	SOUND ABSORPTION ISO 354	0,20 aw
SECONDARY BACKING	Action back	THERMAL RESISTANCE ISO 8302	0,08 m ² K/W
PILE WEIGHT	± 900 gr/m ²	FASTNESS TO LIGHT ISO 105-B02	≥ 5-6
TOTAL WEIGHT	± 1.875 gr/m ²	COLOUR FASTNESS TO WATER ISO 105-E01	≥ 4-5
PILE HEIGHT	± 4,2 mm	RUBBING FASTNESS ISO 105-X12	≥ 4
TOTAL HEIGHT	± 7,0 mm	FIRE RESISTANCE EN 13501-1	Bfl-s1 if glued
TUFT DENSITY	± 173.000/m ²	WIDTH	± 400 cm
PILE DENSITY	± 0,143 g/cm ³	DOP N°	1011#IE0ABV
CLASSIFICATION	32 - LC2	PRODIS/GUT	1721C645
CASTOR CHAIR SUITABILITY EN 985	A: intensive use		
STAIR SUITABILITY EN 1963	A: intensive use		

PM FLEUVE

REPOSE COLLECTION

ALL-PURPOSE DESIGN | BOTANICAL



CONSTRUCTION
Tufting 1/10" cut pile



MATERIALS
100% PA 6



FIRE RESISTANCE
Bfl-s1 if glued

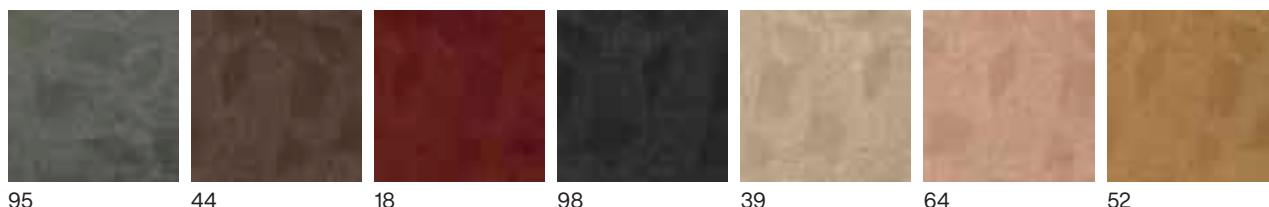


CLASSIFICATION
32 - LC2

SUGGESTED APPLICATION

Especially suited for hospitality.

COLOURS



PRODUCT FEATURES

CONSTRUCTION	Tufting 1/10" cut pile
PILE MATERIAL	100% PA 6
PRIMARY BACKING	Non woven PES
SECONDARY BACKING	Action back
PILE WEIGHT	± 900 gr/m ²
TOTAL WEIGHT	± 1.875 gr/m ²
PILE HEIGHT	± 4,2 mm
TOTAL HEIGHT	± 7,0 mm
TUFT DENSITY	± 173.000/m ²
PILE DENSITY	± 0,143 g/cm ³
CLASSIFICATION	32 - LC2
CASTOR CHAIR SUITABILITY EN 985	A: intensive use
STAIR SUITABILITY EN 1963	A: intensive use

PERMANENTLY ANTISTATIC ISO 6356	< 2 kV
IMPACT NOISE RATING ISO 140-8	24 dB ΔLw
SOUND ABSORPTION ISO 354	0,20 aw
THERMAL RESISTANCE ISO 8302	0,08 m ² K/W
FASTNESS TO LIGHT ISO 105-B02	≥ 5-6
COLOUR FASTNESS TO WATER ISO 105-E01	≥ 4-5
RUBBING FASTNESS ISO 105-X12	≥ 4
FIRE RESISTANCE EN 13501-1	Bfl-s1 if glued
WIDTH	± 400 cm
DOP N°	1011#IE0ABV
PRODIS/GUT	1721C645

PM EROSE

REPOSE COLLECTION

ALL-PURPOSE DESIGN | CONTEMPORARY



CONSTRUCTION
Tufting 1/10" cut pile



MATERIALS
100% PA 6



FIRE RESISTANCE
Bfl-s1 if glued

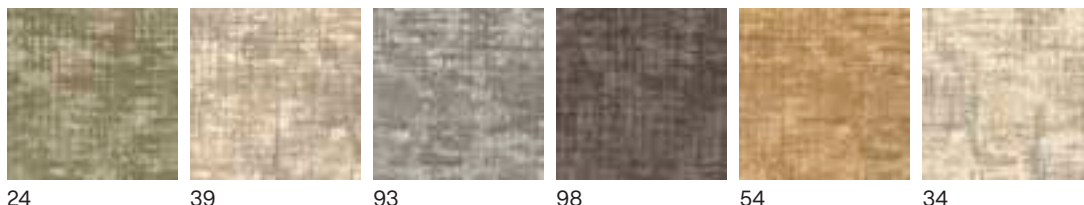


CLASSIFICATION
32 - LC2

SUGGESTED APPLICATION

Especially suited for hospitality.

COLOURS



PRODUCT FEATURES

CONSTRUCTION	Tufting 1/10" cut pile	PERMANENTLY ANTISTATIC ISO 6356	< 2 kV
PILE MATERIAL	100% PA 6	IMPACT NOISE RATING ISO 140-8	24 dB ΔLw
PRIMARY BACKING	Non woven PES	SOUND ABSORPTION ISO 354	0,20 aw
SECONDARY BACKING	Action back	THERMAL RESISTANCE ISO 8302	0,08 m ² K/W
PILE WEIGHT	± 900 gr/m ²	FASTNESS TO LIGHT ISO 105-B02	≥ 5-6
TOTAL WEIGHT	± 1.875 gr/m ²	COLOUR FASTNESS TO WATER ISO 105-E01	≥ 4-5
PILE HEIGHT	± 4,2 mm	RUBBING FASTNESS ISO 105-X12	≥ 4
TOTAL HEIGHT	± 7,0 mm	FIRE RESISTANCE EN 13501-1	Bfl-s1 if glued
TUFT DENSITY	± 173.000/m ²	WIDTH	± 400 cm
PILE DENSITY	± 0,143 g/cm ³	DOP N°	1011#IE0ABV
CLASSIFICATION	32 - LC2	PRODIS/GUT	1721C645
CASTOR CHAIR SUITABILITY EN 985	A: intensive use		
STAIR SUITABILITY EN 1963	A: intensive use		

RD CASCADE

REPOSE COLLECTION

BEAUTIFUL BLEND | BRILLIANCE & ELEGANCE | ULTIMATE SOFTNESS



CONSTRUCTION
Tufting 1/10" cut pile



MATERIALS
100% PA 6



FIRE RESISTANCE
Cfl-s1



CLASSIFICATION
32 - LC4

SUGGESTED APPLICATION

Especially suited for hospitality.

COLOURS



PRODUCT FEATURES

CONSTRUCTION	Tufting 1/10" cut pile	PERMANENTLY ANTISTATIC ISO 6356	< 2 kV
PILE MATERIAL	100% PA 6	IMPACT NOISE RATING ISO 140-8	25 dB ΔLw
PRIMARY BACKING	Non woven PES	SOUND ABSORPTION ISO 354	0,20 aw
SECONDARY BACKING	Action back	THERMAL RESISTANCE ISO 8302	0,11m ² K/W
PILE WEIGHT	± 1.100 gr/m ²	FASTNESS TO LIGHT ISO 105-B02	≥ 5
TOTAL WEIGHT	± 2.250 gr/m ²	COLOUR FASTNESS TO WATER ISO 105-E01	≥ 4-5
PILE HEIGHT	± 5,4 mm	RUBBING FASTNESS ISO 105-X12	≥ 4
TOTAL HEIGHT	± 7,9 mm	FIRE RESISTANCE EN 13501-1	Cfl-s1
TUFT DENSITY	± 209.000/m ²	WIDTH	± 400 cm
PILE DENSITY	± 0,169 g/cm ³	DOP N°	1011#IE0ACL
CLASSIFICATION	32 - LC4	PRODIS/GUT	AB7B10DB
CASTOR CHAIR SUITABILITY EN 985	A: intensive use		
STAIR SUITABILITY EN 1963	A: intensive use		

GRAVURE COLLECTION



ELEVATING INTERIORS THROUGH BOLD EXPRESSION

The Gravure Collection is bold and captivating, designed to leave an impression. With eye-catching patterns and muted colour tones, it bridges artistry and functionality. Each design plays with light, depth, and tactility, transforming floors into statements that enrich modern interiors with creative energy.

PRODUCTS

QUALITY	STRUCTURE	CLASSIFICATION	FIRE RESISTANCE
RV COLLAGE	Tufting 1/10" loop pile	33 - LC1	C _{fl} -s1
RV GLINT	Tufting 1/10" loop pile	33 - LC1	C _{fl} -s1

RV COLLAGE

GRAVURE COLLECTION

BOLD DESIGN | EYE-CATCHING | MUTED COLOR TONES



CONSTRUCTION
Tufting 1/10" loop pile



MATERIALS
100% PA 6



FIRE RESISTANCE
Cfl-s1



CLASSIFICATION
33 - LC1

SUGGESTED APPLICATION

Especially suited for hospitality.

COLOURS



PRODUCT FEATURES

CONSTRUCTION	Tufting 1/10" loop pile	PERMANENTLY ANTISTATIC ISO 6356	< 2 kV
PILE MATERIAL	100% PA 6	IMPACT NOISE RATING ISO 140-8	25 dB ΔLw
PRIMARY BACKING	Non woven PES	SOUND ABSORPTION ISO 354	0,15 aw
SECONDARY BACKING	Action back	THERMAL RESISTANCE ISO 8302	0,07 m ² K/W
PILE WEIGHT	± 615 gr/m ²	FASTNESS TO LIGHT ISO 105-B02	> 5-6
TOTAL WEIGHT	± 1.850 gr/m ²	COLOUR FASTNESS TO WATER ISO 105-E01	≥ 4-5
PILE HEIGHT	± 3,1 mm	RUBBING FASTNESS ISO 105-X12	≥ 4
TOTAL HEIGHT	± 5,8 mm	FIRE RESISTANCE EN 13501-1	Cfl-s1
TUFT DENSITY	± 218.000/m ²	WIDTH	± 400 cm
PILE DENSITY	± 0,118g/cm ³	DOP N*	1011#IE0ACL
CLASSIFICATION	33 - LC1	PRODIS/GUT	D40G4B04
CASTOR CHAIR SUITABILITY EN 985	A: intensive use		
STAIR SUITABILITY EN 1963	A: intensive use		

RV GLINT

GRAVURE COLLECTION

BOLD DESIGN | EYE-CATCHING | MUTED COLOR TONES



CONSTRUCTION
Tufting 1/10" loop pile



MATERIALS
100% PA 6



FIRE RESISTANCE
Cfl-s1



CLASSIFICATION
33 - LC1

SUGGESTED APPLICATION

Especially suited for hospitality.

COLOURS



PRODUCT FEATURES

CONSTRUCTION	Tufting 1/10" loop pile	PERMANENTLY ANTISTATIC ISO 6356	< 2 kV
PILE MATERIAL	100% PA 6	IMPACT NOISE RATING ISO 140-8	25 dB ΔLw
PRIMARY BACKING	Non woven PES	SOUND ABSORPTION ISO 354	0,15 aw
SECONDARY BACKING	Action back	THERMAL RESISTANCE ISO 8302	0,07 m ² K/W
PILE WEIGHT	± 615 gr/m ²	FASTNESS TO LIGHT ISO 105-B02	> 5-6
TOTAL WEIGHT	± 1.850 gr/m ²	COLOUR FASTNESS TO WATER ISO 105-E01	≥ 4-5
PILE HEIGHT	± 3,1 mm	RUBBING FASTNESS ISO 105-X12	≥ 4
TOTAL HEIGHT	± 5,8 mm	FIRE RESISTANCE EN 13501-1	Cfl-s1
TUFT DENSITY	± 218.000/m ²	WIDTH	± 400 cm
PILE DENSITY	± 0,118g/cm ³	DOP N*	1011#IE0ACL
CLASSIFICATION	33 - LC1	PRODIS/GUT	D40G4B04
CASTOR CHAIR SUITABILITY EN 985	A: intensive use		
STAIR SUITABILITY EN 1963	A: intensive use		

CUSTOM DESIGN

The background of the image is a close-up, vertical view of a blue-stained wood grain. The grain lines are prominent and run vertically, with a slight curve towards the right side. The color is a rich, deep blue, and the texture is highly detailed, showing the natural grain patterns of the wood.

With ITC Custom Design, your imagination is the only boundary. Whether you want to echo a brand identity, create a unique atmosphere, or make a bold statement, we help transform ideas into striking floor designs. Starting from 240m², you can unlock tailored carpet solutions that reflect your project's unique identity.

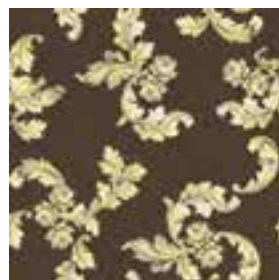
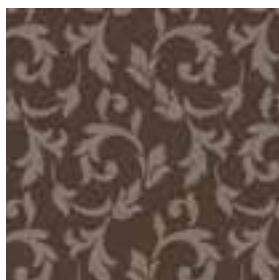
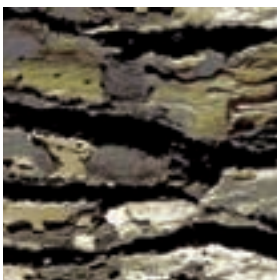
Choose from our wide portfolio of ready-made designs or bring your own creation to the table. With ten versatile colour banks at your disposal, designs can range from refined and understated to vibrant and fully bespoke. Select from six premium carpet constructions and two backing options, each with specific possibilities in 4m or 5m widths.

STEP 1: PICK ONE OF OUR MANY DESIGNS

OR SEND US YOUR OWN

Our designers have prepared a wide range of designs to choose from. No matter which style or theme you're looking for, we've got you covered. Be it biophilic, retro, classic, timeless, minimalistic or patterned, our design portfolio holds it all.

Feeling even more creative? Starting from 480m², it's possible for you to submit your own design. Together with our design team you can make your own ideas come to life.



STEP 2: CHOOSE YOUR COLOURS

Ten curated colour banks, each composed of twelve harmonious shades, make up our colour offering. Each palette is designed to create a sense of balance and beauty, quietly elevating every space they touch.

As a standard, one colour bank is adopted, allowing selections to be made within its carefully crafted harmony. For orders of 480m² or more, shades may be mixed across different banks, or a custom colour can be introduced.



STEP 3: CHOOSE YOUR CARPET CONSTRUCTION

SELECT ONE OF OUR SIX TEXTURE OPTIONS

Once you've selected the colour bank you'd like to work with, it's time to choose the carpet construction. This foundation is where your custom design comes to life, shaped by the texture you've envisioned. Our extensive range includes everything from dense cut piles to saxony softness and resilient loop piles.

Unsure which texture to choose? Think application. Where does your custom carpet go? What is the function of the room? What level of underfoot comfort do you prefer? Knowing the answer to these questions, will help you decide the right texture choice. Ranging from classifications 32 and 33, all carpet constructions are suitable for heavy use.



PROMENADE

CONSTRUCTION: Tufting 1/10" cut pile

PILE WEIGHT: ± 900 gr/m²

CLASSIFICATION: 32 - LC2



PROGRESSA

CONSTRUCTION: Tufting 1/10" cut pile

PILE WEIGHT: ± 1.150 gr/m²

CLASSIFICATION: 33 - LC4



RADIANT

CONSTRUCTION: Tufting 1/10" cut pile

PILE WEIGHT: ± 1.100 gr/m²

CLASSIFICATION: 32 - LC4



RIVELLO

CONSTRUCTION: Tufting 1/10" loop pile

PILE WEIGHT: ± 615 gr/m²

CLASSIFICATION: 33 - LC1



PROJECTA

CONSTRUCTION: Tufting 5/64" cut pile

PILE WEIGHT: ± 630 gr/m²

CLASSIFICATION: 32 - LC2



PROVIDER

CONSTRUCTION: Tufting 1/10" cut pile

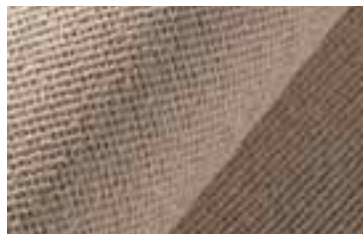
PILE WEIGHT: ± 1.400 gr/m²

CLASSIFICATION: 33 - LC5

STEP 4: CHOOSE YOUR BACKING

The final touch to your custom carpet is selecting the backing. Same as the previous step, the carpet's application should guide your decision. You can choose between two backings: Action back and Power back.

All designs come standard with Action back, a woven polypropylene backing developed to meet fire-resistance requirements in demanding project environments. For projects starting from 1000m², where acoustic comfort and enhanced insulation are top priorities, Power Back is the preferred choice. This high-performance, heavy felt backing is especially suited to commercial interiors, delivering both quietude and softness underfoot.



ACTION BACK



POWER BACK

Underfoot comfort	★	★ ★ ★ ★
Isolation properties	★	★ ★ ★ ★
Acoustic performance	★	★ ★ ★ ★

OVERVIEW

4M			
ACTION BACK (AB)		POWER BACK (PB)	
Promenade (PM) 900 g/m ² Progressa (PG) 1150 g/m ² Provider (PV) 1400 g/m ² Radiant (RD) 1100 g/m ² Rivello (RV) 615 g/m ² Projecta (PJ) 630 g/m ²		Promenade (PM) 900 g/m ² Progressa (PG) 1150 g/m ² Provider (PV) 1400 g/m ² Radiant (RD) 1100 g/m ² Rivello (RV) 615 g/m ² Projecta (PJ) 630 g/m ²	
1 colour bank existing (or easy*) design	mix of colour banks custom colours own (complex) design	1 colour bank existing (or easy*) design	mix of colour banks custom colours own (complex) design
min. 240m ²	min. 480m ²	min. 1000m ²	

5M

ACTION BACK (AB)

Progressa (PG)

1150 g/m²

**Promenade (PM)
Provider (PV)**

900 g/m²
1400 g/m²

1 colour bank
existing (or easy*) design

mix of colour banks
custom colours
own (complex) design

1 colour bank
existing (or easy*) design

mix of colour banks
custom colours
own (complex) design

min. 300m²

min. 600m²

min. 1000m²

*easy design: maximum of 1 hour of work by the designers to finalize the colors and design.

SUSTAINABILITY



The common thread that runs through ITC It's not red, but green. Because we continuously strive for the most sustainable approach. From the materials we use, over our production processes and waste management, to our finished products. Thoughtful design, for customers who want to experience luxurious softness and do something for the environment at the same time.

SUSTAINABLY SELECTING MATERIALS

Crafting beautiful, durable carpets starts with selecting the right materials. Yarns and backings that not only excel in terms of quality but sustainability too. By increasing the percentage of recycled or renewable materials every year, we make a difference. One carpet at a time.

ENDURING DESIGNS, LONG-LASTING PRODUCTS

Long-lasting, luxurious carpets, which stay on trend for years to come: that's what we're passionate about. Flooring solutions that aren't just aesthetically pleasing and easy to maintain, but that are also produced responsibly and sustainably.

RESPONSIBLE PRODUCTION

We take sustainability to heart. In the choice of materials, and our operations. That's how we contribute to a better world. Because we want our planet to be – and remain – a beautiful and comfortable place for all to enjoy. How? By continuously striving to reduce our carbon footprint, by taking care of our water resources and by trying to recycle and reuse what would otherwise be wasted.



**OUR MISSION IS TO
INCORPORATE
SUSTAINABILITY INTO
EVERYTHING WE DO
— PROVIDING
BEAUTIFUL,
THOUGHTFUL
DESIGN THAT MAKES
A HOME A MORE
COMFORTABLE PLACE
FOR EVERYONE.**

Every interior tells a story and at ITC, we lay the foundation for that story to unfold. Our High Performance Collections are designed for spaces that demand both strength and beauty, delivering carpets that perform under pressure while elevating interiors with timeless style.

From essential neutrals to bold graphic prints, each collection reflects our belief that flooring should be both practical and inspiring. Crafted with precision and rooted in sustainability, our carpets are made to last.

Register at our partner portal: my.itc-carpets.com. The portal brings together everything you need to support your projects, from technical sheets and manuals to high-quality product visuals and inspiring interior photography. Designed to guide, inform and inspire, the portal gives you the tools to transform ideas into lasting design.

Be inspired.



itc