

STONE

Celebrating 50 years of an iconic carpet



THE B.I.C.
catalogue

DEAR CUSTOMER

Thank you for your interest in our luxury products. Since our establishment in 1956, B.I.C. Carpets has been committed to providing personalized service tailored to your needs. We take pride in offering top-notch quality, flexibility, and sustainability to customers worldwide. Our rugs and carpets grace prestigious locations across the globe, adorning embassies, hotels, executive offices, luxury yachts, and the most exclusive residences.

Drawing upon the rich tradition of Wilton weaving, a time-honored method renowned for crafting durable luxury carpets on machine driven looms, B.I.C. Carpets proudly operates from Belgium, the heart of the textile industry. Through an expansive network of agents, importers, and dealers, we cater to the needs of clients worldwide.

In addition to our Wilton weaving tradition, B.I.C. Carpets offers an exquisite collection of luxury hand-tufted rugs. This contemporary interpretation of tapestry art results in rugs of unparalleled quality, distinguished by their elegant appearance and tactile sensation. Renowned for its versatility in design and finishing options, hand-tufting is the favored choice of interior designers and decorators seeking to enhance the look and feel of their projects.

With a wide range of design options available, including patterns, motifs, styles, colors, and textures, we invite you to customize your rug to perfection.

Seeking inspiration? Explore our website and social media for a glimpse into our world of luxury. Should you have any inquiries or require a B.I.C. update, please do not hesitate to contact us at sales@bic-carpets.com or via phone at +32 56 23 54 10.



Table of Content

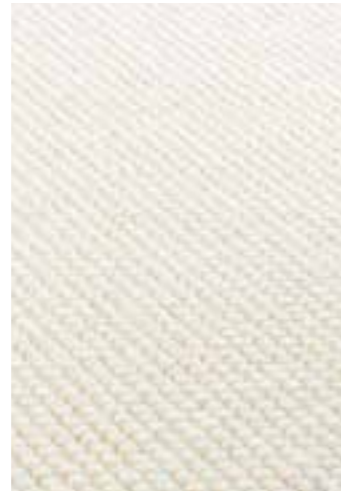
About	2	Queen	112
Luxury Woven	6	Royal	114
Atrar	8	Shadow 2.0	116
Blitz	10	Trinity	118
Chelha	12	<i>Bamboo Silk pom colours</i>	124
Cilou	14	<i>Fine Wool pom colours</i>	126
Eden	16	<i>Wool pom colours</i>	128
Fusion.....	22	<i>Lyocell pom colours</i>	130
<i>Sustainability</i>	24	Designs	136
Galaxy	26	Tracing the Terrace	138
Isul	28	Sienna	140
Luna	30	Aztec	142
Mila	32	Chevron	143
Nature	36	Savile	144
Nautilus	38	Tide	145
Pavé Berberi	40	Trip to Triangle	146
Pavé de Luxe	42	Roundal.....	148
Stone	44	Flash.....	150
Timaru	52	Trail	151
Tosh	56	Brick	152
Hand-tuft	58	Ilha	154
Bliss	62	Musk	155
Fly	66	Universal Unity	156
Fuse	72	Moss.....	158
Club design	74	Origin	159
Tartan	76	Eclipse	160
Wave	78	Flattering the Flowers	162
Line	80	Stripe	164
Herringbone	82	Streaks	166
Flow	84	Rows	167
Gradient Fine Wool	86	Shifted	168
Gradient Lyocell	90	Osgar	169
Gravel	96	Window of Wealth	170
Grid.....	98	Terra	172
Joy	100	Flash	174
Mecca	102	Morse	175
Medina	104	Scale	176
Parker.....	110	Earth	178

LUXURY WOVEN

The art of Wilton weaving is an age-old tradition rooted in craftsmanship and dedication. Each carpet in our collection is meticulously made by skilled artisans, whose passion for the craft resonates in every intricate detail. The Wilton weaving process is renowned for its precision and durability, ensuring that our rugs are not only a feast for the eyes but also a long-term investment.

Wilton weaving is one of most traditional ways of making durable luxury carpets on machine driven looms. Based in Belgium, the centre of the textile business, we serve our many European clients through an extensive network of agents, importers and selected dealers.





1870

White



5236

Cold Grey



5207

Sandy Brown

sizes: available in standard sizes, special sizes and broadloom
wilton woven: loop pile
pile composition: 100% pure wool
pile weight: ca. 2300 g/m²
total weight: ca. 3000 g/m²
pile height: ca. 7 mm
total height: ca. 9 mm
backing: PES/cotton, jute & latex
width: 4 m
use: residential & general commercial use
made in Belgium

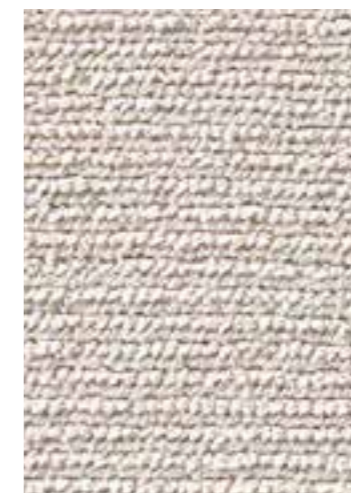
ATRAR





sizes: available in standard sizes, special sizes and broadloom
wilton woven: cut pile & loop pile
pile composition: 100% micro-tech PES
pile weight: ca. 3580 g/m²
total weight: ca. 4400 g/m²
pile height: ca. 15 mm
total height: ca. 17 mm
backing: PES/cotton & latex
width: 4 m
use: residential & light commercial use
made in Belgium

BLITZ



3890 Champagne



3820 Light Grey



3810 Silver



CHELHA

sizes: available in standard sizes, special sizes & broadloom
wilton woven: loop pile
pile composition: 100% pure wool
pile weight: ca. 2500 g/m²
total weight: ca. 3200 g/m²
pile height: ca. 15 mm
total height: ca. 17 mm
backing: PES/cotton, jute & latex
width: 4 m
use: residential & light commercial use
made in Belgium



1406

Grey

CILOU

sizes: available in standard sizes, special sizes and broadloom

wilton woven: cut pile

pile composition: 70% regenerated nylon - 30% wool

pile weight: ca. 2670 g/m²

total weight: ca. 3600 g/m²

pile height: ca. 11 mm

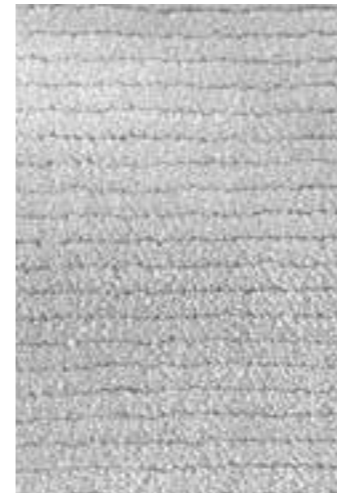
total height: ca. 13 mm

backing: PES, glassfibre, jute & latex

width: 4 m

use: residential & moderate commercial use

made in Belgium



2260

Zinc



2240

Dune



2270

Maize



2220

Porcelain



2210

Cream



2230

Gold



2250

Rust



2280

Forest Green

LUXURY WOVEN



3320

Ivory



3330

Honey



3360

Mist Grey



sizes: available in standard sizes, special sizes & broadloom
wilton woven: cutpile
pile composition: 100% durable eco nylon
pile weight: ca. 6130 g/m²
total weight: ca. 7400 g/m²
pile height: ca. 35 mm
total height: ca. 38 mm
backing: PES/cotton, jute & latex
width: 4 m
use: residential & light commercial use
made in Belgium

COSMIC



EDEN

sizes: available in standard sizes, special sizes and broadloom

wilton woven: loop pile

pile composition: 100% regenerated nylon

pile weight: ca. 4590 g/m²

total weight: ca. 5400 g/m²

pile height: ca. 14 mm

total height: ca. 16 mm

backing: PES, glass fibre, jute & latex

width: 4 m

use: residential & moderate commercial use

made in Belgium

EDEN Colors



3969 Pebble



3968 Twine



2240 Dune



2270 Maize



2210 Cream



2220 Porcelain



2260 Zinc



2230 Gold



3970 Warm Grey



4480 Boulder Silver



2280 Forest Green



2250 Rust



2205 Onyx





Porcelain



Gold



Zinc



Forest green



sizes: available in standard sizes, special sizes & broadloom
wilton woven: cutpile & looppile
pile composition: 100% regenerated nylon
pile weight: ca. 2150 g/m²
total weight: ca. 2950 g/m²
pile height: ca. 10 mm
total height: ca. 12 mm
backing: PES/cotton, jute & latex
width: 4 m
use: residential & light commercial use
made in Belgium

FUSION

ECOLOGICAL MISSION

We are on a mission for ecological sustainability. To further this cause, we've established our own ecological label, aligning ourselves with the ongoing green revolution. Our dedication to these environmental values and principles is paramount, reflecting the values shared by both our team and our customers.

At B.I.C.-Carpets, we prioritize compliance with environmental regulations aimed at safeguarding the health and well-being of our planet. We are steadfast in our commitment to continuously improve our environmental performance, including reducing waste in our production processes, selecting eco-friendly resources, and increasing our utilization of renewable energy sources.

Our goal is to elevate your interior projects to new heights through thoughtful design that not only enhances visual appeal but also aligns with our environmental objectives.

Commitment

We are dedicated to upholding the highest standards of excellence, combining an aesthetic approach to materials with unwavering commitment to ecological responsibility.

At B.I.C. Carpets, our pledge is to deliver a personalized service that adds genuine value to our global clientele. Exploring innovative possibilities in yarns, weaves, and colors is integral to our daily operations.

Drawing upon years of artisanal expertise, we meticulously select natural and sustainable materials to craft products renowned for their longevity. Our overarching mission is to establish ourselves as the foremost authority in providing innovative, premium solutions for woven floor coverings.

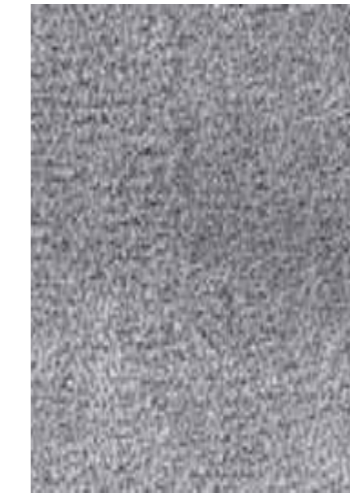


Our efforts explained

1. Our production sites are strategically located in Europe, specifically in Belgium and Portugal. This deliberate choice ensures compliance with rigorous regulations governing human rights and labour conditions. Additionally, centralizing our operations in Belgium minimizes transport, reducing our ecological footprint.
2. Over 90% of our suppliers are based within Europe. We maintain long-standing partnerships with these carefully selected suppliers, who undergo scrutiny regarding their environmental practices, respect for nature, animal welfare, and commitment to sustainability.
3. We have developed several carpet qualities using ecologically responsible materials, including wool, regenerated nylon, and cotton. For example, our Eden and Cilou qualities utilize polyamide 6 yarns that can be recycled into new resources.
4. Our solar panel system, installed at our production site, generated 496,822 kWh in 2021. A quarter of this energy powered our production, while the surplus was injected into the grid. Additionally, we've invested in LED lighting throughout our facilities to minimize energy consumption.
5. Our contract qualities have been certified by Centexbel to meet the A+ criteria for VOC levels and VOC substances, ensuring optimal air quality in new projects.
6. We meticulously sort all waste into separate containers to facilitate recycling. Wood pallets are collected and recycled by Geldof, while leftover carpet pieces are repurposed for cutting out samples rather than being discarded.
7. We actively engage in local partnerships to promote waste reduction and reuse. For example, we collaborate with partners to assemble new carpets using leftover pieces or utilize small carpet scraps as covers for furniture.



3890 Champagne



3820 Light Grey



3840 Aqua



3810 Silver



3860 Copper Brown



3870 Ocre



3910 Antracite

sizes: available in standard sizes, special sizes and broadloom
wilton woven: cut pile
pile composition: 100% micro-tech PES
pile weight: ca. 3580 g/m²
total weight: ca. 4400 g/m²
pile height: ca. 15 mm
total height: ca. 17 mm
backing: PES/cotton & latex
width: 4 m
use: residential & light commercial use
made in Belgium

GALAXY

sizes: available in all standard sizes, special sizes & broadloom

wilton woven: loop pile

pile composition: 100% pure wool

pile weight: ca. 2520 g/m²

total weight: cca. 3500 g/m²

pile height: ca. 11 mm

total height: ca. 15 mm

width: 4 m

backing: PES, cotton, glass fibre & latex

use: residential & light commercial use

ISUL



5136 Cold Grey



5107 Sandy Brown



1870

White



1860

Cold Grey



sizes: available in standard sizes, special sizes & broadloom
wilton woven: loop pile
pile composition: 100% wool
pile weight: ca. 1850 g/m²
total weight: ca. 2600 g/m²
pile height: ca. 9 mm
total height: ca. 11 mm
backing: PES/cotton, jute & latex
width: 4 m
use: residential & light commercial use
made in Belgium

LUNA

MILA



COLORS MILA



2220

Porcelain



2240

Dune



2260

Zinc



3970

Warm Grey



4480

Boulder Silver



2205

Onyx

sizes: available in standard sizes, special sizes and broadloom
wilton woven: cut pile
pile weight: ca. 2750 g/m²
total weight: ca. 3250 g/m²
pile height: ca. 6,4 mm
total height: ca. 8 mm

pile composition: 100% regenerated nylon
backing: PES, glassfibre, jute & latex
width: 4 m
use: residential & moderate commercial use
made in Belgium



sizes: available in all standard sizes, special sizes & broadloom

wilton woven: loop pile

pile composition: 100% pure wool

pile weight: ca. 1900 g/m²

total weight: cca. 2630 g/m²

pile height: ca. 9 mm

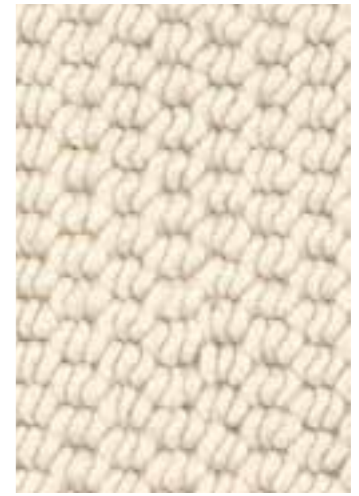
total height: ca. 11 mm

width: 4 m

backing: PES, jute & latex

use: residential & general commercial use

NATURE



150

White



1920

Cotton Grey



1930

Cherry Blossom



NAUTILUS

sizes: available in standard sizes, special sizes & broadloom
wilton woven: cut pile & loop pile
pile composition: 78% wool - 22% PES/bio cotton
pile weight: ca. 3300 g/m²
total weight: ca. 4350 g/m²
pile height: ca. 14 mm
total height: ca. 17 mm
backing: PES/cotton, jute & latex
width: 4 m
use: residential & general commercial use
made in Belgium



PAVÉ BERBERI

sizes: available in standard sizes,
special sizes & broadloom
wilfon woven: loop pile
pile composition: 100% pure wool
pile weight: ca. 1250 g/m²
total weight: ca. 2300 g/m²
pile height: ca. 5 mm
total height: ca. 8 mm
backing: PES/cotton, jute & latex
width: 4 m
use: residential & light commercial use
made in Belgium



5136

Cold Grey



5107

Sandy Brown

sizes: available in standard sizes, special sizes and broadloom
wilton woven: loop pile
pile composition: 100% pure wool
pile weight: ca. 1500 g/m²
total weight: ca. 2300 g/m²
pile height: ca. 15 mm
total height: ca. 15 mm
backing: PES/cotton, jute & latex
width: 3,7 m
use: residential & light commercial use
made in Belgium

PAVÉ DE LUXE



5797

Charcoal



5722

Carrara



STONE

sizes: available in standard sizes,
special sizes & broadloom
wilton woven: loop pile
pile composition: 100% pure wool
pile weight: ca. 4950 g/m²
total weight: ca. 6100 g/m²
pile height: ca. 30 mm
total height: ca. 33 mm
backing: PES/cotton, jute & latex
width: 4 m
use: residential & light commercial use
made in Belgium



THE STONE STORY

50 YEARS OF AN ICONIC CARPET

The story began in 1976 when Lucien Vlerick, then president of B.I.C.-Carpets, was struck by the enchanting charm of the cobblestoned streets of the Greek Archipelago islands. These softly-hued, gently-rounded uneven stones would later serve as the inspiration for an icon in the world of flooring: the B.I.C. STONE carpet.



290

Ivoire



292

Grege



2922

Carrara



297

Charcoal



2911

Alpin

STONE AT THE MOMA

November 18, 1985 marks a very special day for B.I.C.-Carpets. It was on that very day that Arthur Drexler, Director of the Museum of Modern Art in New York, announced the entry of the Stone carpet into the museum's permanent collections. This recognition marked a milestone for 'Stone,' affirming its rightful place among artistic masterpieces.



The Museum of Modern Art

Arthur Drexler
Director
Department of
Architecture and Design
(212) 705-9547

December 20, 1985

Mr. Lucien Vlerick
52 Avenue Saint Sebastian
8500 Kortrijk Belgium

Dear Mr. Vlerick:

It is my great pleasure to inform you that, at its November 18, 1985 meeting, the Architecture and Design Committee agreed to include your Ivory "B.I.C. Stone" Carpet in our Design Collection. We are very pleased to have the carpet and, on behalf of the Trustees, we wish to thank you for your generous gift.

Sincerely,

Arthur Drexler

FLOOR COVERING WEEKLY, MAY 19, 1986

Museum Adds Wool Rug To Collection



Available from Concepts International, Stones is now a part of New York's Museum of Modern Art's permanent Architecture and Design Collection.

NEW YORK—The Museum of Modern Art, here, has selected a wool rug for its permanent Architecture and Design Collection.

The rug, Stones, has a highly accented texture woven from felted wool yarns by B.I.C., Belgian International Carpets.

It is available from Concepts International in three rug sizes plus specials, and 6-foot, 7-inch wide broadloom in four earth colors.





1990 Carrara



6904 Beige



3972 Charcoal



3971 Alpine



TIMARU

sizes: available in standard sizes, special sizes & broadloom
wilton woven: looppile
pile composition: 100% pure wool
pile weight: ca. 2100 g/m²
total weight: ca. 3250 g/m²
pile height: ca. 10 mm
total height: ca. 12 mm
backing: PES/cotton, jute & latex
width: 4 m
use: residential & light commercial use
made in Belgium



Peter Lindbergh



1870

White



1880

Sandy Brown



1860

Cold Grey

TOSH

sizes: available in standard sizes, special sizes and broadloom

wilton woven: looppile

pile composition: 100% pure wool

pile weight: ca. 3200 g/m²

total weight: cca. 4150 g/m²

pile height: ca. 17 mm

total height: ca. 20 mm

width: 4 m

backing: PES, jute & latex

use: residential & light commercial use

HAND-TUFT

"The hand-tufting technique not only ensures high quality but also opens up endless design possibilities. Various textures can be applied, including variations in height achieved through shearing, carving and cut versus loop pile. Carving, in particular, can create a stunning 3D effect for your rug. Whether you prefer a patterned design or a more understated look, the choice is entirely yours."



DISCOVER THE ARTISTRY BEHIND HAND-TUFTED RUGS

The hand-tuft technique is renowned for its superior quality and endless design possibilities.

All it takes to create an eye-catching rug is an idea, a choice of material, and a color palette. A wide array of textures can be achieved through shearing, the intricate interplay of cut versus loop pile and the artistry of carving. Carving adds depth and dimension, enhancing your rug with a captivating 3D effect. Whether you opt for a patterned design or prefer a clean, understated look, the choice is entirely yours.

B.I.C. Carpets turns your idea into a proposal, after discussing all the requirements and possibilities in order to produce the final design artwork. If necessary, we adjust until it fits your needs.

Once the design is approved, the tufting process begins. Complex designs are meticulously drafted by hand onto a canvas or projected from a screen, showcasing true craftsmanship. Using a special compressed air gun, the skilled tufters shoot little U-shaped tufts of wool, fine wool or lyocell into the canvas, filling the pattern with the right colors and bringing the design to life.

Precision is paramount as tiny scissors integrated into the tufting gun determine the pile height. Upon completion of the design, the backing is applied, and the carpet undergoes a drying process. The final touches, including shearing the piles to the desired height and hand-carving intricate details, culminate in the creation of a truly bespoke carpet.

With meticulous craftsmanship and attention to detail, your hand-tufted carpet is now ready to transform your space, infusing warmth and personality into your home.



BLISS



COLORS BLISS

Available in every bamboo silk pom colour



BS330



BS309



BS726



BS324



BS104



BS15



BS84



BS324



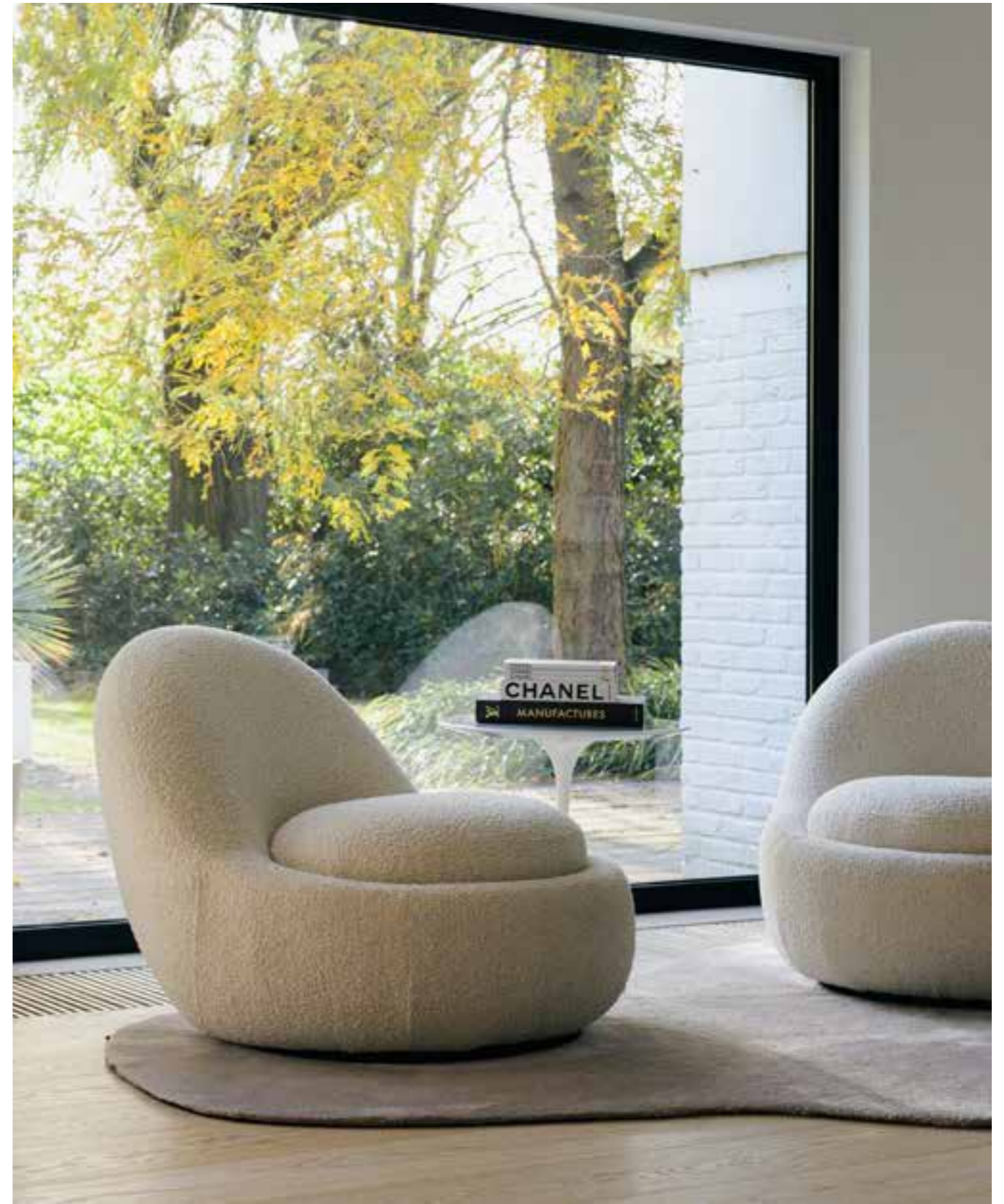
BS819

BLISS 18 MM

sizes: available as a finished rug and wall-to-wall carpet
pile composition: 100% bamboo silk
pile weight: ca. 5700 g/m²
total weight: ca. 6600 g/m²
pile height: ca. 18 mm
total height: ca. 20 mm
max. size without a seam: 450x900 cm
use: residential & general commercial use
made in Portugal

BLISS 35 MM

sizes: available as a finished rug and wall to wall carpet
pile composition: 100% bamboo silk
pile weight: ca. 4450 g/m²
total weight: ca. 5250 g/m²
pile height: ca. 35 mm
total height: ca. 37 mm
max. size without a seam: 450x900 cm
use: residential & general commercial use
made in Portugal





FLY



691-315



705-710



705-301



705-706



309-609

Available in every fine wool pom colour



FLY

sizes: available as a finished rug and wall-to-wall carpet
pile composition: 100% fine wool
pile weight: ca. 3600 g/m² or 4200 g/m²
total weight: ca. 4600 g/m² or 5200 g/m²
pile height: ca. 28 or 40 mm
total height: ca. 30 or 42 mm
max. size without a seam: 450x900 cm
use: residential & light commercial use
made in Portugal

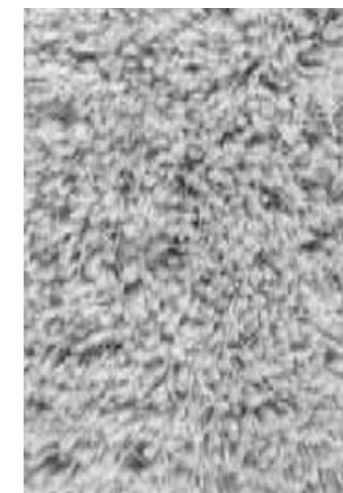




FW302-MC300



FW702-MC300



FW691-MC309



FW305-MC309

sizes: available as a finished rug and wall-to-wall carpet
pile composition: 50% fine wool - 50 wool
pile weight: ca. 5200 g/m²
total weight: ca. 5400 g/m²
pile height: ca. 40 mm
total height: ca. 42 mm
max. size without a seam: 450x900 cm
use: residential & light commercial use
made in Portugal

FUSE



Escada

Line

Wave

Herringbone

CLUB
DESIGN



BS330-QW300



BS05-QW306



BS07-QW411



BS726-QW714



BS205-QW609



TARTAN

sizes: available as a finished rug and wall-to-wall carpet

pile composition: 60% Bamboo Silk - 40% wool

pile weight: ca. 4400 g/m²

total weight: ca. 5400 g/m²

pile height: ca. 16 mm

total height: ca. 18 mm

max. size without a seam: 450x900 cm

use: residential & light commercial use

made in Portugal

HAND-TUFT



Pacific



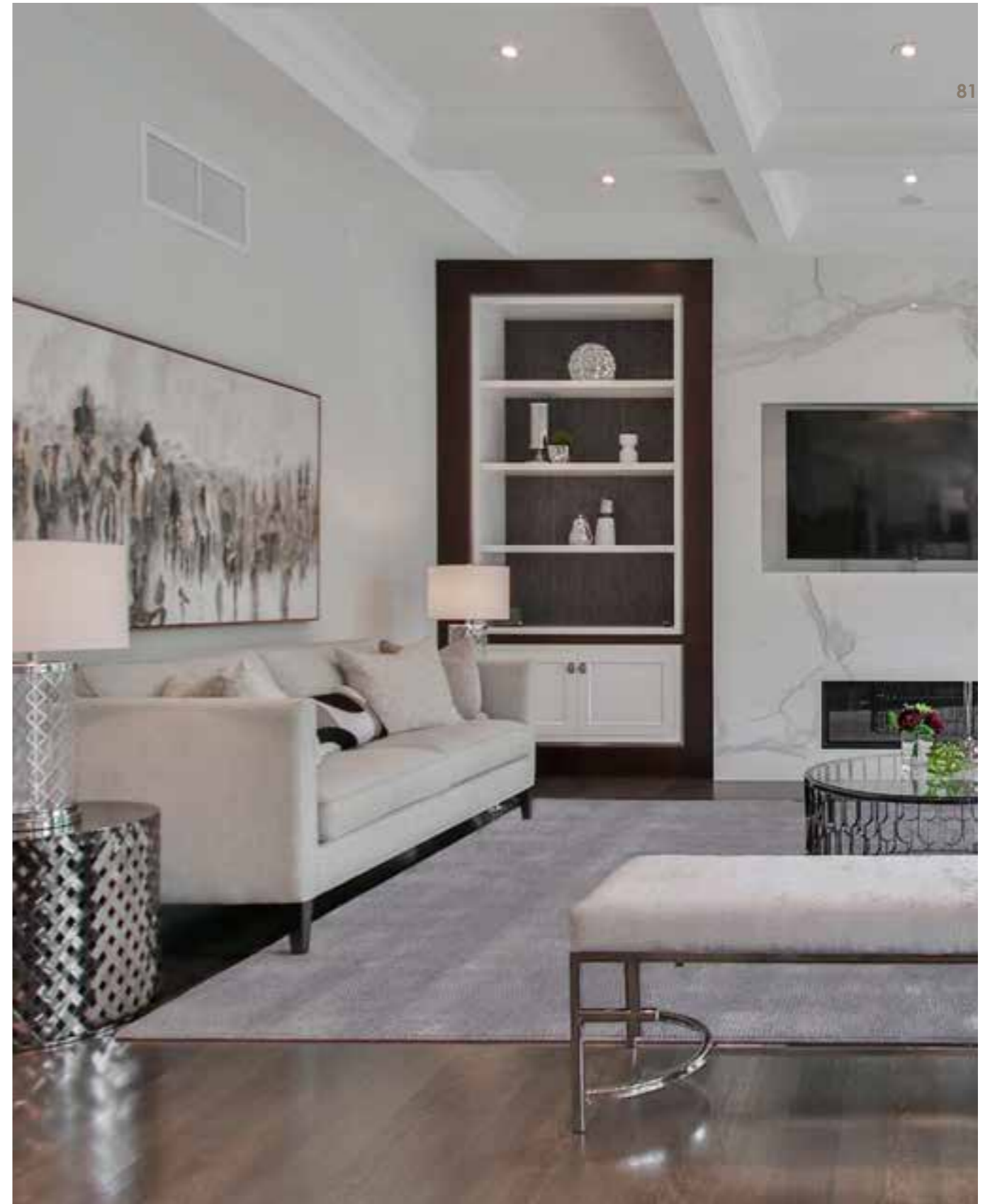
Ice



Marlin



Still



sizes: available as a finished rug and wall-to-wall carpet
pile composition: 60% lyocell - 40% wool
pile weight: ca. 4400 g/m²
total weight: ca. 5400 g/m²
pile height: ca. 16 mm
total height: ca. 18 mm
max. size without a seam: 450x900 cm
use: residential & light commercial use
made in Portugal

WAVE



COLORS LINE



Silver



Lake



Tan



Cloud



Charcoal



Ocean



Moss



Army



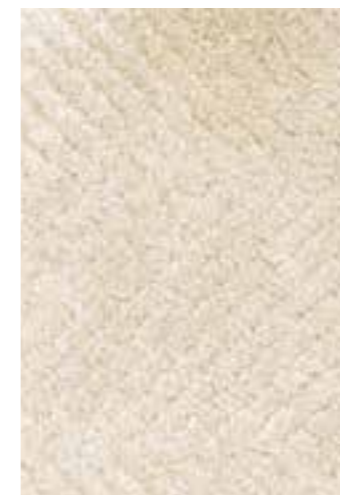
COLORS HERRINGBONE



Emperor



Jack



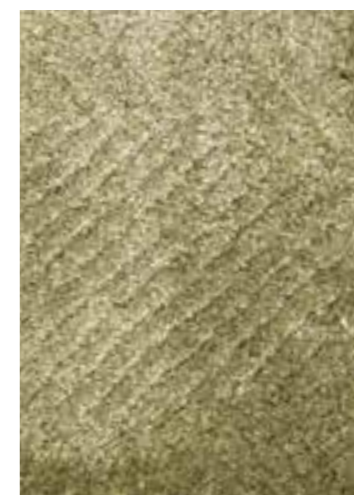
Marlin



White



Corvina



Bass



FLOW

sizes: available as a finished rug
and wall-to-wall carpet

pile composition: 100% fine wool

pile weight: ca. ca. 3600 g/m² - ca. 4200 g/m²

total weight: ca. 4600 g/m² - ca. 5200 g/m²

pile height: ca. 28 mm - ca. 40 mm

total height: ca. 30 mm - ca. 42 mm

max. size without a seam: 450x900 cm

use: residential & light commercial use

made in Portugal

Available in every fine wool pom colour



Base color FW 301
Line color FW 710



Base colors FW 315-301
Line color FW 727



Base colors FW 301 - 302 - 609
Line color FW 908



GRADIENT fine wool

sizes: available as a finished rug
and wall-to-wall carpet

pile composition: 100% fine wool

pile weight: ca. 3800 g/m²

total weight: ca. 4800 g/m²

pile height: ca. 14 mm

total height: ca. 16 mm

max. size without a seam: 450x900 cm

use: residential & moderate commercial use

made in Portugal

Available in every fine wool pom colour





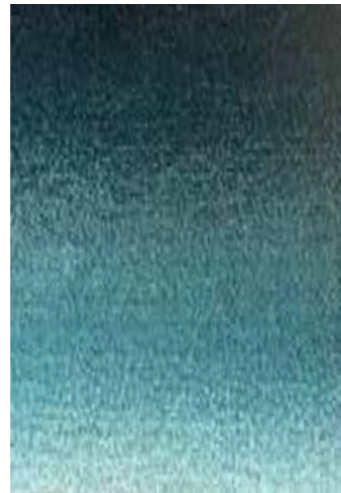
FW100-FW302-FW301-FW705-FW706



FW315-FW609-FW309-FW308-FW316



FW301-FW162-FW161-FW160-
FW522-FW715-FW536



FW604-FW588-FW531-FW595-FW521





sizes: available as a finished rug and wall to wall carpet
pile composition: 100% lyocell
pile weight: ca. 5000 g/m²
total weight: ca. 6000 g/m²
pile height: ca. 12 mm
total height: ca. 14 mm
max. size without a seam: 450x900 cm
use: residential & light commercial use
made in Portugal
Available in every lyocell pom colour

GRADIENT lyocell



LY301-LY340-BS005-LY309-BS007



LY036-BS015-LY603-LY625-BS594-
BS309-LY609-LY705

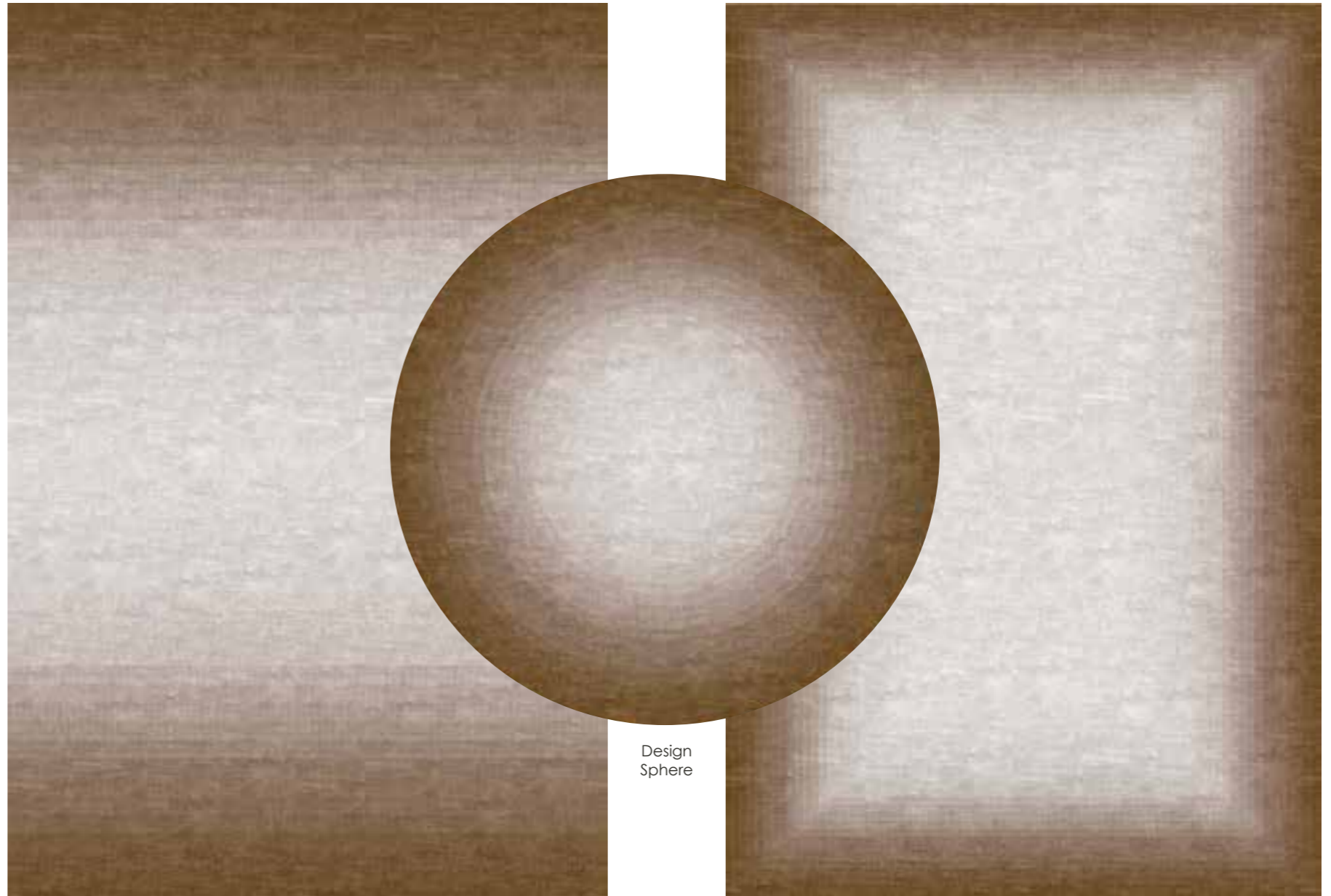


LY300-LY301-LY705-LY609-LY125-
BS726

GRADIENT DESIGNS



Design Crossing



Design Sphere

Design Curve

Design Frame

COLORS GRAVEL

Available in every fine wool & lyocell pom colour



35 Mushroom



30 Dim Grey



10 Ivory



11 Sand



15 Silver



36 Smoke



63 Verdun



50 Cypress



45 Robin Egg

sizes: available as a finished rug and wall-to-wall carpet
pile composition: 60% fine wool - 40% lyocell
pile weight: ca. 4400 g/m²
total weight: ca. 5400 g/m²
pile height: ca. 20 mm
total height: ca. 22 mm
max. size without a seam: 450x900 cm
use: residential & light commercial use
made in Portugal

GRAVEL



HAND-TUFT



Elevate your home with
the luxurious comfort of
an exquisitely soft rug

sizes: available as a finished rug and wall to wall carpet
pile composition: 70% lyocell - 30 % fine wool
pile weight: ca. 4400 g/m²
total weight: ca. 5400 g/m²
pile height: ca. 20 mm
total height: ca. 22 mm
max. size without a seam: 450x900 cm
use: residential & light commercial use
made in Portugal

Custom
made

HAND-TUFT

COLORS JOY

Available in every lyocell & fine wool pom colour page 122 & 126



FW302-LY302-LY96



LY301-LY705-FW706



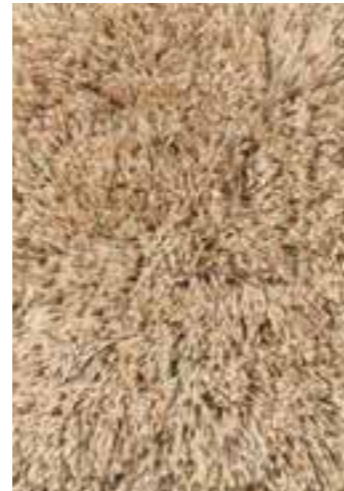
LY700-LY750-FW705



LY307-LY340-FW609



LY705-LY125-FW619



LY750-FW728



FW309-LY308-FW305



FW308-LY305



FW652-TW654-LY617-LY307



sizes: available as a finished rug and wall-to-wall carpet
pile composition: 60% fine wool - 40% lyocell
pile weight: ca. 5400 g/m²
total weight: ca. 5600 g/m²
pile height: ca. 40 mm
total height: ca. 42 mm
max. size without a seam: 450x900 cm
use: residential & light commercial use
made in Portugal

JOY



pure
warmth



White

MECCA

sizes: available as a finished rug and wall to wall carpet

pile composition: 100% wool

pile weight: ca. 3500 g/m²

total weight: ca. 4500 g/m²

pile height: ca. 30 mm

total height: ca. 32 mm

max. size without a seam: 450x900 cm

use: residential & light commercial use

made in Portugal

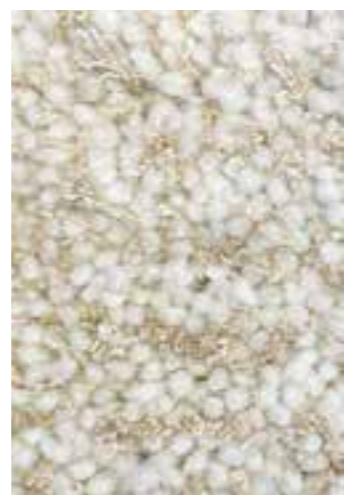
Available in every wool pom colour

HAND-TUFT

MEDINA

sizes: available in broadloom & rugs
pile composition: 60% wool - 40% viscose
pile weight: ca. 3500 g/m²
total weight: ca. 4500 g/m²
pile height: ca. 30 mm
total height: ca. 32 mm
max. size without a seam: 450x900 cm
use: residential & light commercial use
made in Portugal

Available in every wool pom colour



Ivoire



HAND-TUFT

109

PARKER

sizes: available as a finished rug and wall to wall carpet

pile composition: 100% fine wool

pile weight: ca. 3800 g/m²

total weight: ca. 4800 g/m²

pile height: ca. 16 mm

total height: ca. 18 mm

width: 4 m

max. size without a seam: 450x900 cm

use: residential & light commercial use

made in Portugal



COLORS PARKER

Available in every fine wool pom colour



315-306



609-2



609-302-301



FW301-FW302-FW691



FW301-FW315-FW728-FW705



705



609-315



705



FW302-FW652-FW530-FW727-
FW710-FW715-FW722



FW315-FW609



FW609-FW691



FW691-FW315

natural
versatile



QUEEN

sizes: available as a finished rug
and wall to wall carpet
pile composition: 100% wool
pile weight: ca. 4000 g/m²
total weight: ca. 5000 g/m²
pile height: ca. 14 mm
total height: ca. 16 mm
max. size without a seam: 450x900 cm
use: residential & moderate commercial use
made in Portugal

Available in every wool pom colour

HAND-TUFT



ROYAL

sizes: available as a finished rug
and wall to wall carpet
pile composition: 100% wool
pile weight: ca. 3500 g/m²
total weight: ca. 4500 g/m²
pile height: ca. 10 mm
total height: ca. 12 mm
max. size without a seam: 450x900 cm
use: residential & moderate commercial use
made in Portugal



Available in every wool pom colour



SHADOW 2.0

sizes: available as a finished rug and wall to wall carpet
pile composition: 60% lyocell - 40% wool
pile weight: ca. 4800 g/m²
total weight: ca. 5800 g/m²
pile height: ca. 16 mm
total height: ca. 18 mm
max. size without a seam: 450x900 cm
use: residential & light commercial use
made in Portugal



304



503



506



609



711



733



810



700





Available in every lyocell pom colour

sustainable

silky

TRINITY

sizes: available as finished rug & wall-to-wall carpet

pile composition: 100% lyocell

pile weight: ca. 5000 g/m²

total weight: ca. 6000 g/m²

pile height: ca. 12 mm

total height: ca. 14 mm

max. size without a seam: 450x900 cm

use: residential & light commercial use

made in Portugal





COLORS TRINITY

Available in every lyocell pom colour page 126



304



733



506



700



609



503



711



810

When
sustainability
meets
elegance

POM COLORS BAMBOO SILK

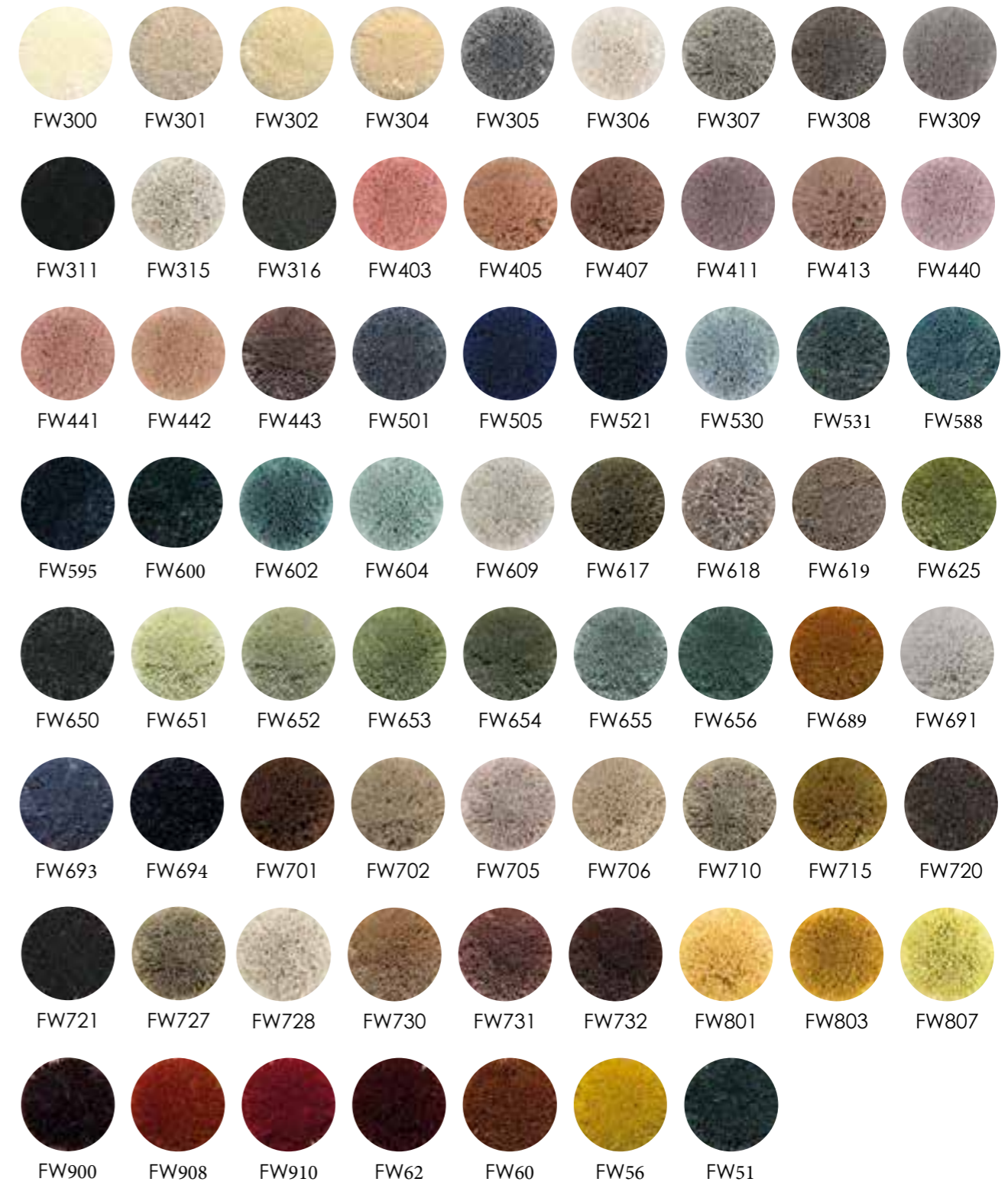


BAMBOO SILK

Bamboo silk boasts a softness akin to cashmere, coupled with a delicate sheen that creates a rich depth in color. Sourced from bamboo, this natural fiber is also hypoallergenic, perfect for chic and healthy homes.

Collections: Bliss

POM COLORS FINE WOOL



FINE WOOL

The exquisite look and feel of fine wool enhances the many benefits of wool fibers with a touch of elegance and opulence, making it an ideal choice for sophisticated interiors.

Collections: Club Design / Flow / Fly / Fuse / Gradient FW / Gravel / Grid / Joy / Parker

POM COLORS WOOL



Collections: Queen / Royal

POM COLORS LYOCELL



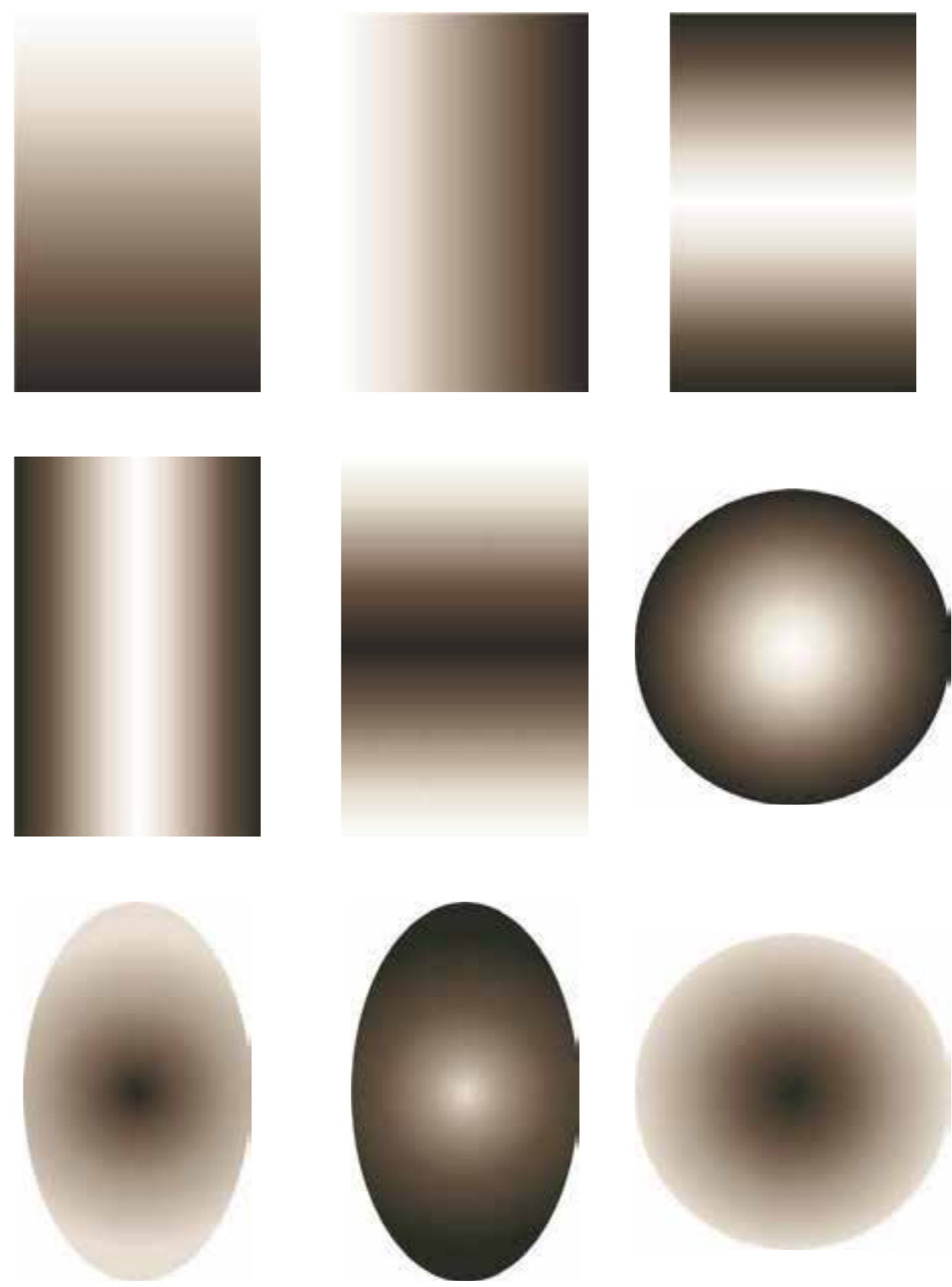
LYOCELL

Lyocell is an eco-friendly fiber harvested from wood cellulose, characterised by its silky smoothness. This sustainable material is also easy to maintain, making it highly suitable for everyday luxury.

Collections: Club design / Gradient / Gravel / Joy / Trinity



GRADIENT IDEAS



SHAPE IDEAS



DESIGNS BY B.I.C.

Are you ready to embark on an inspiring journey of contemporary design? Discover the BIC Design Book, a curated collection of captivating designs for those with a true passion for tapestry and interior design.

At BIC Carpets, we are driven by the power of creativity and the endless possibilities it unfolds. Our manual hand-tuft collection, showcased in the Design Book, stands as a testament to our commitment, offering an extensive range of designs to ignite your imagination. Whether you're an architect in search of inspiration or an interior designer looking for the perfect rug, our Design Book is your quintessential guide.

Choose from a wide range of materials and colors. Each design can be tailored to meet your exact specifications. Share your vision with us, and let's collaborate to bring it to life.

Make a statement with BIC Carpets. Enjoy the journey and do not hesitate to contact us with any questions or for design consultations. The BIC Carpets team looks forward to embarking on this creative adventure with you.

TRACING THE TERRACE

Original size: custom

Composition: 100% fine wool

Color variation:
727/316/705

Available in every fine wool pom colour





SIENNA

Original size: custom

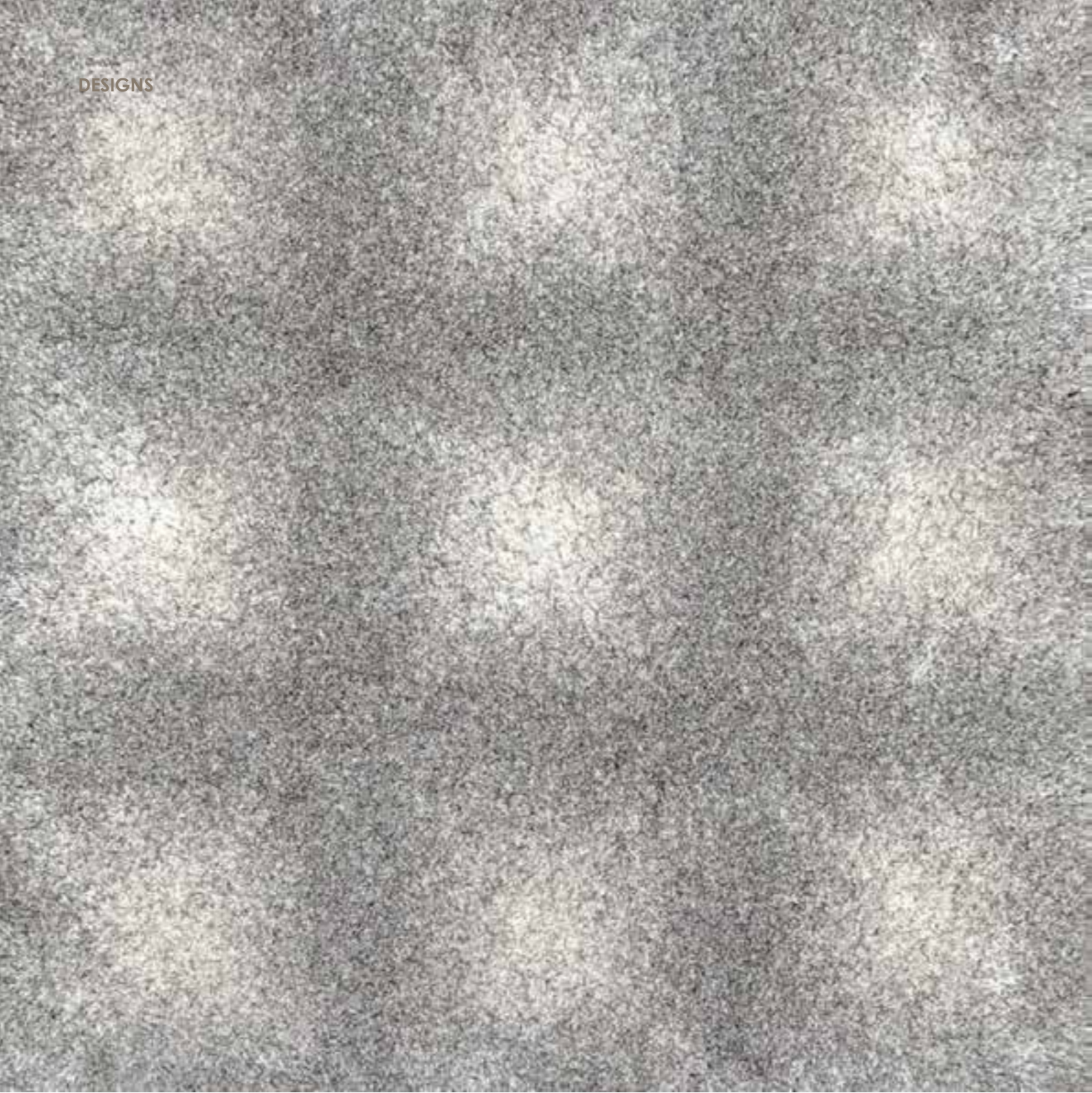
Composition: lyocell, bamboo silk & fine wool

Color variation: FW721, FW720, BS898, FW701, BS820, BS819, FW730, LY438, FW162, FW161, FW160, BS726, FW536

3D effect: 14-45 mm

Available in every pom colour





CHEVRON

Original size: custom

Composition: fine wool / queen wool / lyocell

Color variation: FW300, FW311, QW300, LY301

Available in every lyocel or fine wool pom colour



AZTEC

Original size: custom

Composition: 100% Bamboo silk

Color variation: BS007, BS005

Available in every bamboo silk pom colour

SAVILE

Original size: custom

Composition: lyocell, bamboo silk & fine wool

Color variation: FW721, FW720, BS898, FW701, BS820, BS819, FW730, LY438, FW162, FW161, FW160, BS726, FW536

Available in every lyocel, fine wool or bamboo silk pom colour

TIDE

Original size: custom

Composition: 100% Bamboo Silk

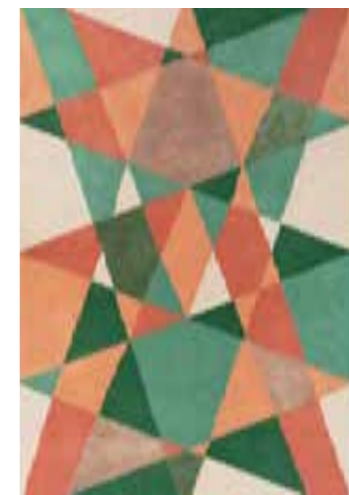
Color variation: BS726

Available in every bamboo silk pom colour





geometric
modernity



TRIP TO TRIANGLE

Original size: custom

Composition: fine wool - lyocell

Color variation:
wool 526/428/62/315/630
lyocell 202/605

Available in every fine wool & lyocell pom colour



ROUNDAL

Original size: custom

Composition: 100% fine wool

Color variation: FW310, FW702

Available in every fine wool pom colour

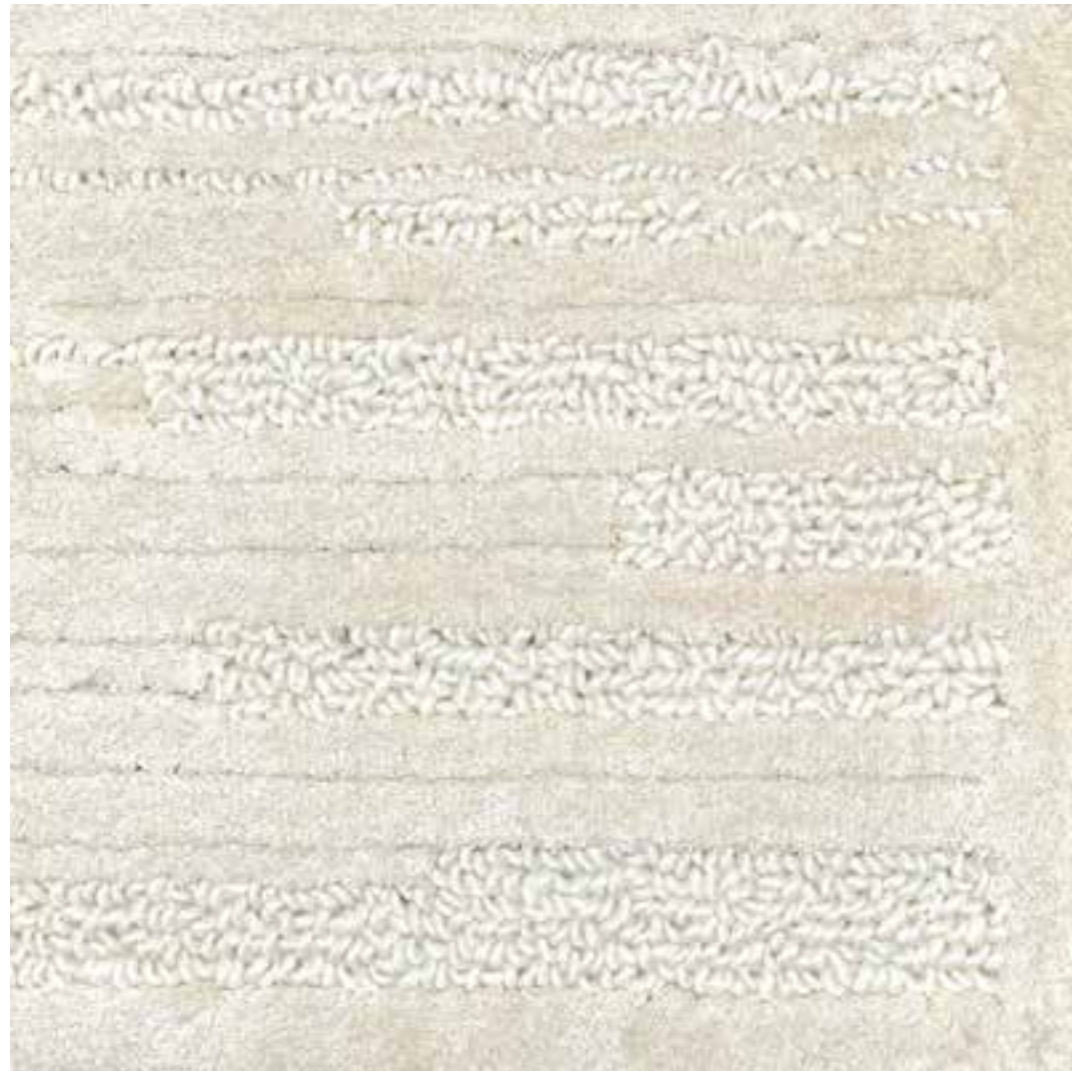
FLASH

Original size: custom

Composition: Bamboo Silk, lyocell, wool

Color variation: LY301, BS330, MC300

Available in every lyocell, wool or bamboo silk pom colour



TRAIL

Original size: custom

Composition: Lyocell, & Mecca wool

Color variation: LY053, MC300

Available in every lyocell & wool pom colour





contemporary
symmetry



BRICK

Original size: 2x3m

Composition: 100% lyocell

Color variation: 609

Available in every lyocell pom colour



MUSK

Original size: custom

Composition: Bamboo silk / lyocell

Color variation: LY707, LY15, LY617, BS726, BS324, LY53

Available in every lyocell or bamboo silk pom colour



ILHA

Original size: custom

Composition: fine wool & queen wool

Color variation: QW405, FW315

Available in every queen & fine wool pom colour



UNIVERSAL UNITY

Original size: 2x3
Composition: 100% fine wool
Color variation: 501
Available in every fine wool pom colour

MOSS

Original size: custom

Composition: 100% Lyocell

Color variation: LY125

Available in every lyocell pom colour



ORIGIN

Original size: custom

Composition: bamboo silk, fine wool, & Mecca

Color variation: FW301, BS330, MC300

Available in every bamboo silk or fine wool pom colour



radiant
rays



ECLIPSE

Original size: custom

Composition: 100% lyocell

Color variation:
base: 305 / lines: 609

Available in every lyocell pom colour



FLATTERING THE FLOWERS

Original size: custom

Composition: 100% wool

Color variation:

910 / 801 / 806 / 615 / 601 / 602 / 513 / 515 / 504

Available in every wool pom colour



STRIPE

Original size: custom

Composition: 100% lyocell

Color variation: 609

Available in every lyocell pom colour



STREAKS

Original size: custom

Composition: lyocell & queen wool

Color variation: LY053, QW311

Available in every lyocell or queen wool pom colour

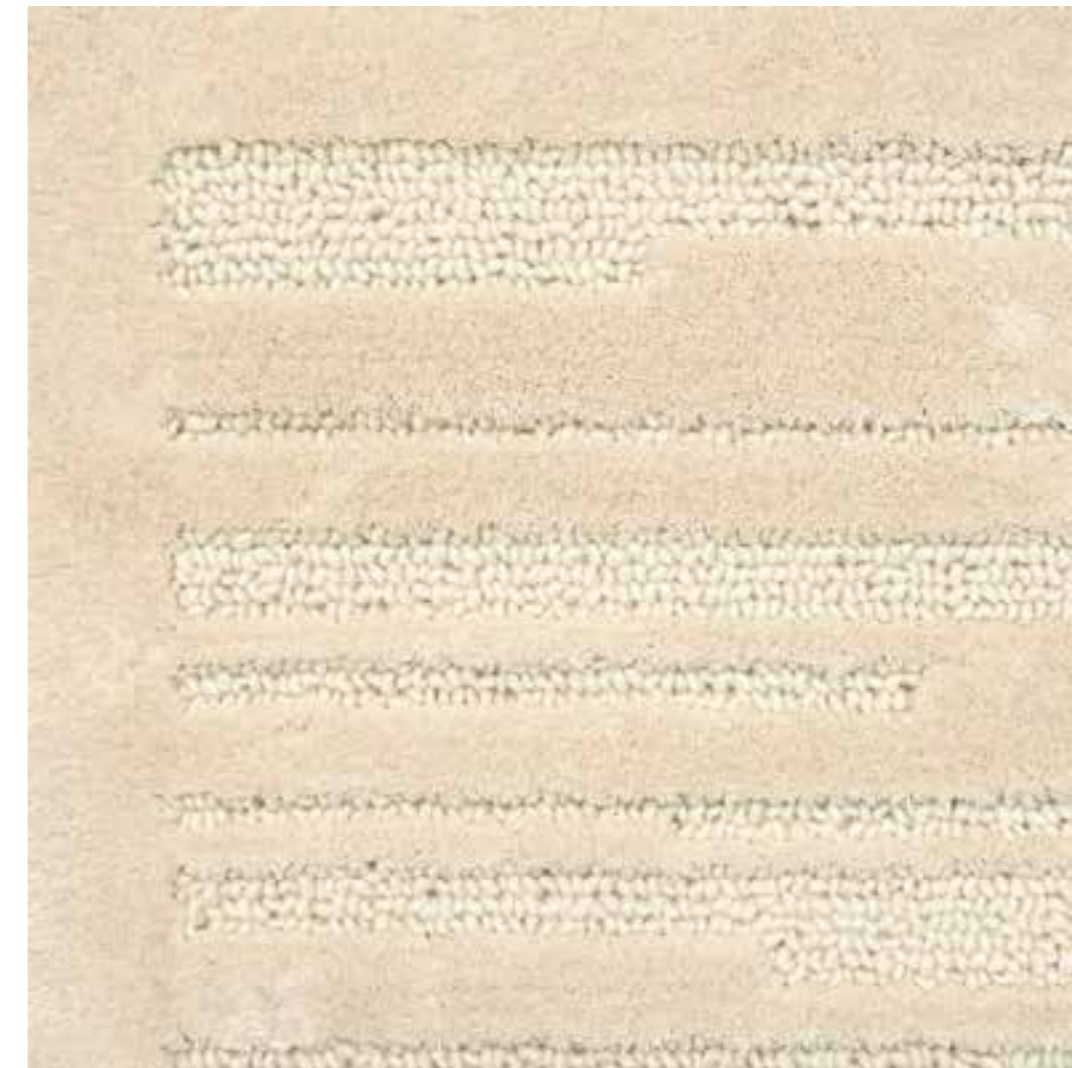
ROWS

Original size: custom

Composition: Bamboo Silk, lyocell & mecca wool

Color variation: LY301, BS330, MC300

Available in every lyocell, bamboo silk or mecca pom colour



DESIGNS



SHIFTED

Original size: custom

Composition: lyocell / bamboo silk

Color variation: LY301, BS330

**Available in every lyocell & bamboo silk
pom colour**

OSGAR

Original size: custom

Composition: 100% bamboo silk

Color variation: BS294, BS292, BS330,
BS005, BS331, BS007

**Available in every bamboo silk pom
colour**





WINDOW OF WEALTH

Original size: custom

Composition: fine wool - lyocell

Color variation:

fine wool 705 - 316 - 443
lyocell 25

Available in every fine wool & lyocell pom colour





TERRA

Original size: custom

Composition: lyocell, bamboo silk & fine wool

Color variation: QW717, QW718, FW302, QW302, QW710, QW714, FW304, QW304, FW161,

Pile-height: 7-25 mm

Available in every lyocell, bamboo silk or fine wool pom colour



TIDAL

Original size: custom

Composition: bamboo silk & Lyocell

Color variation: LY301, BS330

**Available in every lyocell & bamboo silk
pom colour**



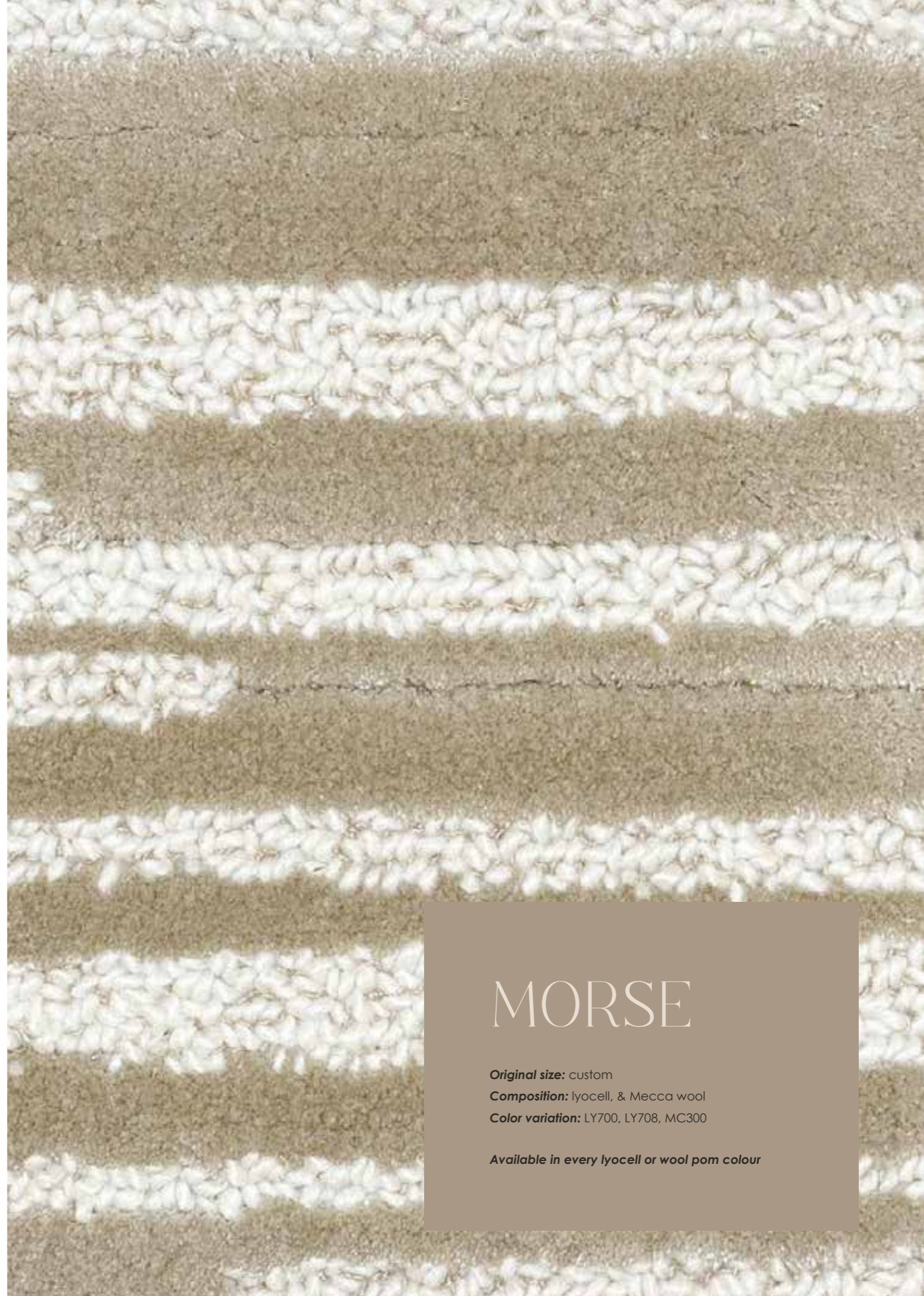
MORSE

Original size: custom

Composition: lyocell, & Mecca wool

Color variation: LY700, LY708, MC300

Available in every lyocell or wool pom colour



SCALE

Original size: custom

Composition: lyocell - fine wool

Color variation:
lyocell 413

Available in every lyocell & fine wool pom colour





EARTH

Original size: custom

Composition: lyocell, wool or fine wool

Available in every lyocell, wool, fine wool or bamboo silk pom colour

majestic

nature



IMPORTANT INFORMATION

Carpets and rugs bearing the B.I.C.-Carpets label make a statement about your sense of style and value. And whether you choose a carpet for its quality, durability or beauty, you can maintain its hard-wearing, long lasting good looks by remembering to:

Vacuum regularly & Remove spills immediately

To protect your carpet from the B.I.C.-Carpets collection, it's very important to do a periodic maintenance. In this way you'll keep your carpet in good shape. The life of your carpet will increase significantly by cleaning your carpet at regular intervals.

Don't wait until your carpet is seriously soiled.

You can consider that extending the life span of your carpet will be the perfect return on investment. Properly maintained carpets enhance the appearance and atmosphere of an interior, at home and in the project environment. A well cared carpet absorbs dirt, dust particles from the air, smoke and noise. It provides a hygienic interior. Maintenance makes sense. A simple maintenance program including regular, interim and periodic cleanings will keep your carpet looking as good as the day it was installed!

Preventative measures

Place absorbent mats at entrances to your home; change or wash when dirty. Regularly change filters in your heating and air conditioning systems. Periodically clean traffic lanes and in front of used chairs with an absorbent powder. Do not apply stain repellent treatments containing any silicone because they tend to accelerate carpet soiling.

Tolerance

We would like to inform you that all our products have a 2% tolerance to weight, color, texture, height, etc. Also due to the properties of natural yarns, such as wool, cotton and lyocell, slight deviations may occur, regarding color and shape. Fibers and small wool and lyocell particles may come loose, this is perfectly normal with natural yarns. Polyester yarns may possibly become partially detached from the core; due to their fineness, a few threads may slip from the binding.

Regular maintenance

The simplest and most frequent maintenance involves vacuuming and spot removal.

Vacuuming

Regular and thorough vacuuming once a week (more often in heavy traffic areas) is an economical and effective way to remove soil and dirt particles before they become embedded into the pile of the carpet. For best results, empty your vacuum bag when half full.

Do certainly not use a vacuum cleaner with a brush.

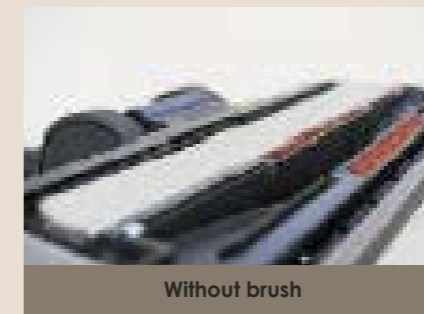
Periodic maintenance

Thorough cleaning is required periodically to remove the deepest soil. There are many deep cleaning methods you can use to ensure the beauty and life of your carpet or rug. When having your carpet professionally cleaned, use a reputable company and check references.

GENERAL: Please be aware: don't use a brush to scrub. The easiest way is to work from the edges towards the center of the stain. Blot again and if necessary, repeat. Let the carpet dry.



clean with a damp cotton cloth



Without brush



Injection instruction

Spot & stain removal

With spot and stain removal, speed is of the essence.

- Blot up liquids with a paper towel or absorbent cloth. Scoop up solids with the end of a knife
- Treat the spot with a spot removal agent which: is suitable for wool, is pH neutral, is explicitly recommended for cleaning carpets and rugs, leaves no sticky residue
- Always follow the manufacturer's directions when using commercial products.
- Use a light, colourfast cotton cloth for the treatment of spots.
- Always work from the outer edge towards the centre to prevent spreading. Use only small quantities of spot removal agent. It's a good idea to replace the cotton cloth as soon as it is soiled.
- Carefully rinse the area with clean water and a sponge after having cleaned it.
- Do not soak the carpet pile.
- Afterwards, blot as dry as possible with clean towel.
- If necessary, always brush cut pile carpets in the direction of the pile.

IMPORTANT: do not use household cleaners such as soft or natural soap, ammonia solution, turpentine, benzine or spot removal agents which are recommended for textiles.

General guidelines for specific fibres

Wool: Atrar - Chelha - Isul - Stone - Tosh - Queen - Royal - Parker - Gradient Fine wool - Fly - Joy Wool fibres may be cleaned using dry or wet cleaning methods, although excessive agitation and excessive heat should be avoided. Wool should be cleaned with neutral detergents and dried quickly to limit oxidation.

Bamboo Silk: Bliss / Lyocell: Trinity - Gradient lyocell - Club design Wool These fibres should be cleaned using a dry cleaning process only. The fibres may be damaged by high temperatures, high pH, sunlight and will lose strength considerably when wet. The cleaning is best left to the carpet cleaning professional.

Polyester: Galaxy - Blitz Polyester fibres may be cleaned using dry or wet cleaning methods, although excessive agitation and excessive heat should be avoided. Polyester should be cleaned with neutral detergents and dried quickly to limit oxidation.

Regenerated nylon: Eden - Cilou - Mila Absorb as much as possible. Use a dry, white absorbent cloth or a plain white paper towel. If necessary, use water or a sustainable cleaning agent.

CREDITS

Mila - Photography: Jurgen Lenaert	4
Stone - Photography: Jurgen Lenaert	7
Chelha - Photography: Stephanie Mathias	12
Cilou - Interior Design: Fleurydebock	14
Eden - Photography: Jurgen Lenaert	20
Mila - Photography: Jurgen Lenaert	32 - 35
Nautilus - Photography: Jurgen Lenaert	36 - 39
Timaru - Photography: Jurgen Lenaert	54
Tosh - Photography: Jurgen Lenaert	56
Bliss - Photography: Jurgen Lenaert	62 - 65
Fly - Interior Design: Vlatex Home Photography: Jurgen lenaert	66 - 69
Fuse - Photography: Jurgen Lenaert	72
Herringbone - Interior Design: Devos Interieur Photography: Jurgen lenaert	74
Gradiënt Fine Wool - Interior Design: Ncbham Photography: Save_as_studio	86
Joy - Photography: Jurgen Lenaert	100
Mecca - Photography: Jurgen Lenaert	102
Parker - Interior Design: Ncbham Photography: Save_as_studio	106
Queen - Interior Design: Toppandlegg	110
Queen - Project: Quilter	112-115
Trinity - Photography: Jurgen Lenaert	120-123
Roundal Parker - Interior Design: Peeters Van Leeuw	136
Earth - Interior Design: Mimilio tapissier	178



HEAD OFFICE:

Vlamingstraat 12, 8560 Wevelgem België
T +32 56 23 54 10 | sales@biccarpets.be
www.biccarpets.be

